

PLAN OF SURVEY OF  
 LOTS 4,5,6,7,8, AND 9 SOUTH OF COLBORNE STREET,  
 PART OF LOTS 3 AND 10 SOUTH OF COLBORNE STREET,  
 COVE STREET (CLOSED BY BY-LAW 90-2011, INSTRUMENT BC208151)  
 PLAN OF THE CITY OF BRANTFORD DATED SEPTEMBER 7, 1892

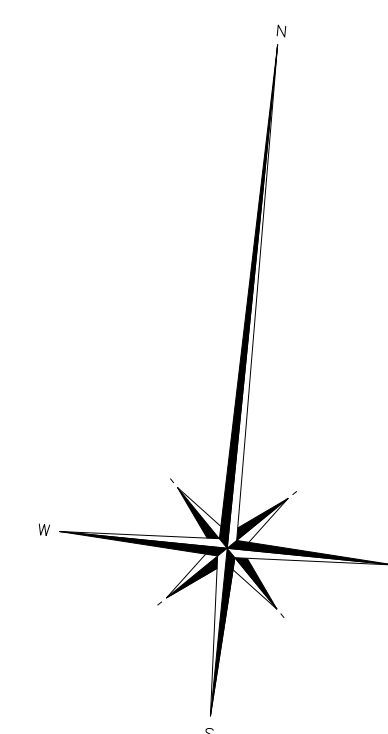
AND  
 LOTS A,B,C,D, REGISTERED PLAN 88,  
 PART OF WATER STREET REGISTERED PLAN 2A,  
 (CLOSED BY BY-LAWS 160-79, INSTRUMENT A242386 AND 89-2011, INSTRUMENT BC208254)  
 PART OF GRAND RIVER NAVIGATION COMPANY LANDS  
 AND  
 PART OF GRAND RIVER NAVIGATION COMPANY LANDS  
 ALSO KNOWN AS LOT C NORTH OF GREENWICH STREET  
 CITY OF BRANTFORD



BEARINGS ARE GRID, DERIVED FROM OBSERVED REFERENCE POINTS A, B  
 BY REAL TIME NETWORK OBSERVATION, UTM ZONE 17, NAD83 (CSRS) (2010)  
 DISTANCES ARE GROUND AND CAN BE CONVERTED TO GRID BY MULTIPLYING BY  
 THE COMBINED SCALE FACTOR OF 0.99961.

POINT ID	NORTHING	EASTING
ORP @	4776407.42	559506.85
ORP @	4776423.70	559647.12

COORDINATES CANNOT, IN THEMSELVES, BE USED TO RE-ESTABLISH CORNERS  
 OR BOUNDARIES SHOWN ON THIS PLAN.



I REQUIRE THIS PLAN TO BE DEPOSITED  
 UNDER THE LAND TITLES ACT.

PLAN 2R-  
 RECEIVED AND DEPOSITED

DATED \_\_\_\_\_

DATED \_\_\_\_\_

REPRESENTATIVE FOR LAND REGISTRAR FOR THE  
 LAND TITLES DIVISION OF BRANT No 2

SCHEDULE

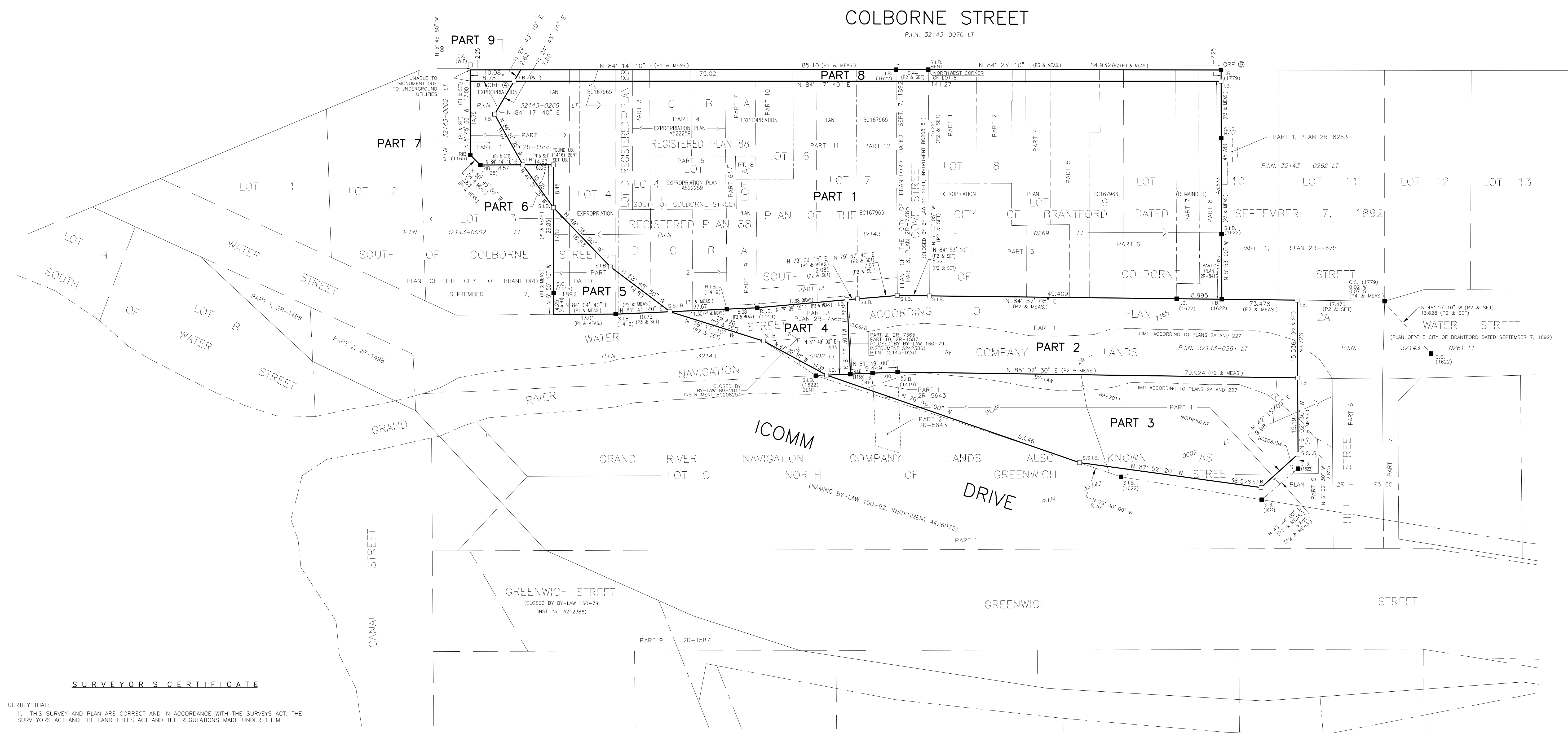
PART	LOT	PLAN	P. I. N.	AREA
1	PART OF LOTS 3,4,5,6,7,8,9 AND 10 SOUTH OF COLBORNE STREET	PLAN OF THE CITY OF BRANTFORD DATED SEPTEMBER 7, 1892	PART OF 32143-0269 LT	0.582ha
	PART OF LOTS A, B, C, AND D	88		
2	PART OF COVE STREET (CLOSED BY BY-LAW 90-2011, INSTRUMENT BC208151)	PLAN OF THE CITY OF BRANTFORD DATED SEPTEMBER 7, 1892	PART OF 32143-0261 LT	0.138ha
	PART OF WATER STREET (CLOSED BY BY-LAWS 160-79, INSTRUMENT A242386 AND 89-2011, INSTRUMENT BC208254)	2A		
3	PART OF GRAND RIVER NAVIGATION COMPANY LANDS AND PART OF GRAND RIVER NAVIGATION COMPANY LANDS ALSO KNOWN AS LOT C NORTH OF GREENWICH STREET		PART OF 32143-0002 LT	0.131ha
	PART OF WATER STREET (CLOSED BY BY-LAW 89-2011, INSTRUMENT BC208254)	2A		
4	PART OF GRAND RIVER NAVIGATION COMPANY LANDS		PART OF 32143-0002 LT	0.026ha
	PART OF LOTS 3 AND 4 SOUTH OF COLBORNE STREET	PLAN OF THE CITY OF BRANTFORD DATED SEPTEMBER 7, 1892		
5	PART OF LOTS C AND D	88	PART OF 32143-0269 LT	0.023ha
	PART OF LOTS 3 AND 4 SOUTH OF COLBORNE STREET	PLAN OF THE CITY OF BRANTFORD DATED SEPTEMBER 7, 1892		
6	PART OF LOTS 3 AND 4 SOUTH OF COLBORNE STREET	PLAN OF THE CITY OF BRANTFORD DATED SEPTEMBER 7, 1892	PART OF 32143-0002 LT	0.012ha
	PART OF LOTS A, B, C, AND D	88		
7	PART OF COVE STREET (CLOSED BY BY-LAW 90-2011, INSTRUMENT BC208151)	PLAN OF THE CITY OF BRANTFORD DATED SEPTEMBER 7, 1892	PART OF 32143-0269 LT	0.033ha
	PART OF LOTS 3,4,5,6,7,8,9 AND 10 SOUTH OF COLBORNE STREET	PLAN OF THE CITY OF BRANTFORD DATED SEPTEMBER 7, 1892		
8	PART OF LOTS 3,4,5,6,7,8,9 AND 10 SOUTH OF COLBORNE STREET	PLAN OF THE CITY OF BRANTFORD DATED SEPTEMBER 7, 1892	PART OF 32143-0269 LT	0.033ha
	PART OF COVE STREET (CLOSED BY BY-LAW 90-2011, INSTRUMENT BC208151)	PLAN OF THE CITY OF BRANTFORD DATED SEPTEMBER 7, 1892		
9	PART OF LOT 3 SOUTH OF COLBORNE STREET	PLAN OF THE CITY OF BRANTFORD DATED SEPTEMBER 7, 1892		21m <sup>2</sup>

PARTS 1,5,7,8 AND 9 COMPRISE ALL OF PIN 32143-0269 LT  
 PART 2 COMPRISES PART OF PIN 32143-0261 LT  
 PARTS 3,4 AND 6 COMPRISE PART OF PIN 32143-0002 LT

LEGEND

- INDICATES IRON BAR FOUND.
- INDICATES IRON BAR SET (No. 1622)
- S.I.B. INDICATES STANDARD IRON BAR
- S.S.I.B. INDICATES SHORT STANDARD IRON BAR
- IB. INDICATES IRON BAR
- R.I.B. INDICATES ROUND IRON BAR
- P 1 DENOTES PLAN BC167965
- P 2 DENOTES PLAN 2R-7365
- P 3 DENOTES PLAN 2R-7675
- P 4 DENOTES PLAN 2R-8413
- 1622 DENOTES DANIEL KREZE OLS
- 1779 DENOTES JOHN MUIR, OLS
- 1416 DENOTES S.M. RUUSKA, OLS
- 1169 DENOTES G.B. SMEATON, OLS
- 1419 DENOTES G. HUPPERT, OLS

METRIC: DISTANCES AND COORDINATES SHOWN ON THIS PLAN ARE IN  
 METRES AND CAN BE CONVERTED TO FEET BY DIVIDING BY 0.3048



SURVEYORS CERTIFICATE

I CERTIFY THAT:  
 1. THIS SURVEY AND PLAN ARE CORRECT AND IN ACCORDANCE WITH THE SURVEYS ACT, THE  
 SURVEYORS ACT AND THE LAND TITLES ACT AND THE REGULATIONS MADE UNDER THEM.

2. THE SURVEY WAS COMPLETED ON THE 17th DAY OF DECEMBER 2020.

DATE \_\_\_\_\_ DANIEL KREZE  
 ONTARIO LAND SURVEYOR