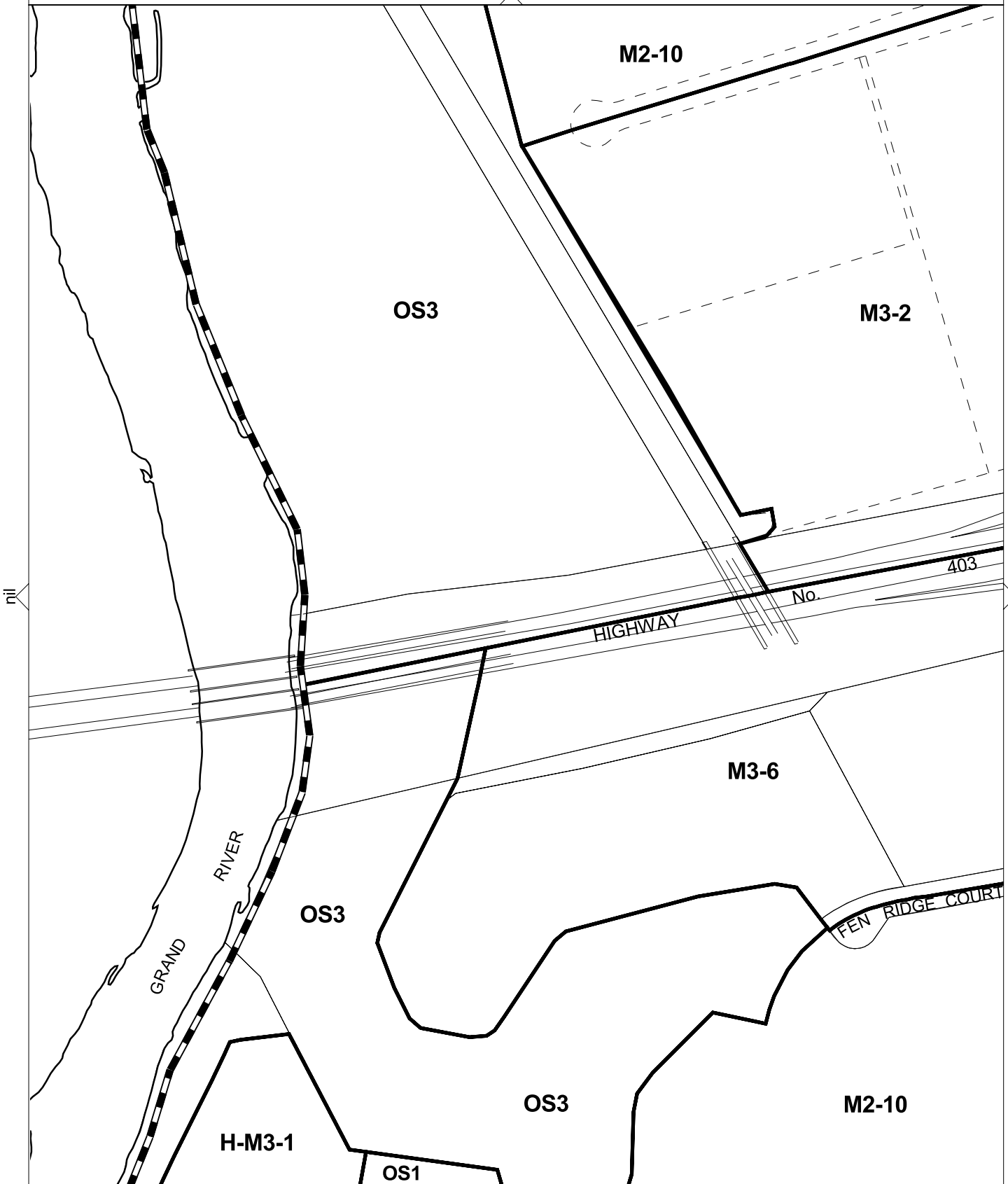
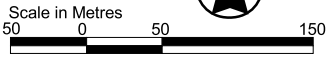


THIS SCHEDULE HAS BEEN CONSOLIDATED BY BYLAWS:

- 172-91
- 41-2000
- 118-2000
- 167-2000
- 185-2001
- 154-2004
- 188-2004
- 214-2004
- 68-2007
- 145-2008



C-1

M2-10

OS3

M3-2

403

HIGHWAY

No.

M3-6

GRAND RIVER

OS3

FEN RIDGE COURT

OS3

M2-10

H-M3-1

OS1

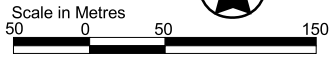
E-1

njl

D-2

THIS SCHEDULE HAS BEEN CONSOLIDATED BY BYLAWS:

- |          |          |          |
|----------|----------|----------|
| 172-91   | 180-2003 | 53-2006  |
| 41-2000  | 154-2004 | 145-2008 |
| 118-2000 | 187-2004 |          |
| 171-2000 | 188-2004 |          |
| 71-2001  | 214-2004 |          |
| 185-2001 | 15-2005  |          |



C-2



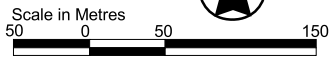
D-1

D-3

E-2

THIS SCHEDULE HAS BEEN CONSOLIDATED BY BYLAWS:

70-91	71-2001	114-2010
172-91	97-2004	
41-2000	154-2004	
118-2000	187-2004	
171-2000	68-2007	



C-3

D-2

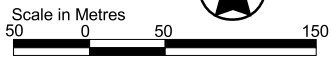
D-4

E-3



THIS SCHEDULE HAS BEEN CONSOLIDATED BY BYLAWS:

- 70-91
- 172-91
- 118-2000
- 97-2004
- 154-2004
- 187-2004
- 68-2007



C-4

403

NO.

HIGHWAY

M2-10

M3

H-R1B

M3-1

M2

D-3

M2-10

D-5

H-R1B

OS1

M2

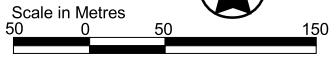
H-R1B

HARDY ROAD

E-4

THIS SCHEDULE HAS BEEN CONSOLIDATED BY BYLAWS:

- 172-91
- 118-2000
- 187-2004
- 68-2007



C-5

M2-10

HIGHWAY

NO.

403

H-R1B

CANADIAN NATIONAL

R1A

NATIONAL

H-R1A

RAILWAY

CHERRY HILL LANE

R1A-1

DRIVE

ST. ANDREWS

PRESTWICK PLACE

D-4

H-R1B

D-6

BRANTFORD GOLF AND COUNTRY CLUB

OS1

OS1

ROAD

HARDY

H-R1B

BRANTFORD GOLF AND COUNTRY CLUB

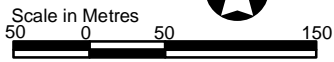
OS1

E-5



THIS SCHEDULE HAS BEEN CONSOLIDATED BY BYLAWS:

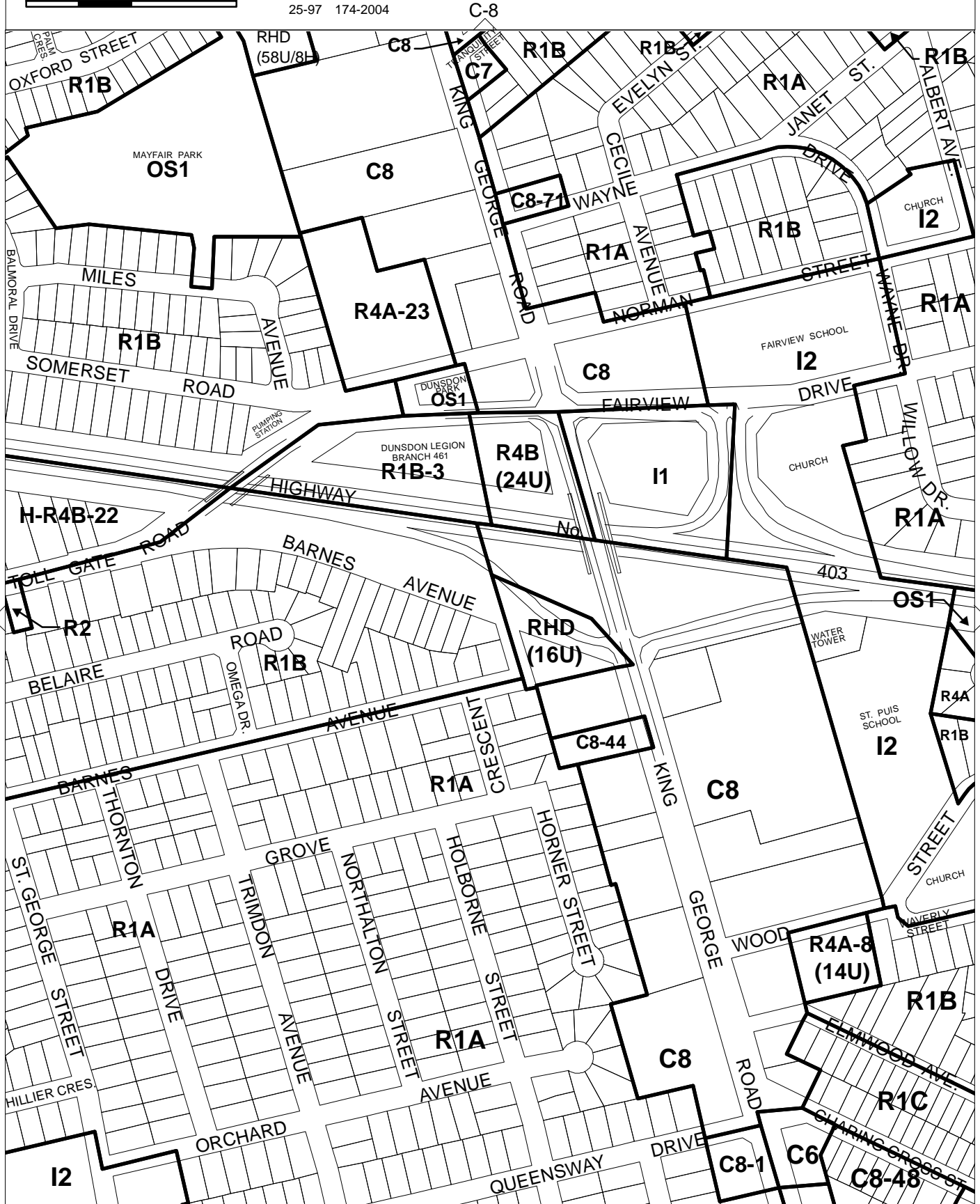
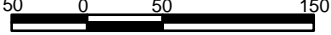
25-91	44-97
131-91	8-98
O.M.B. ORDER	145-98
R910193	78-2012
35-95	



THIS SCHEDULE HAS BEEN CONSOLIDATED BY BYLAWS:

25-91	66-99	95-2011
130-91	135-99	78-2012
34-93	137-99	90-2013
35-95	99-2002	
25-97	174-2004	

Scale in Metres

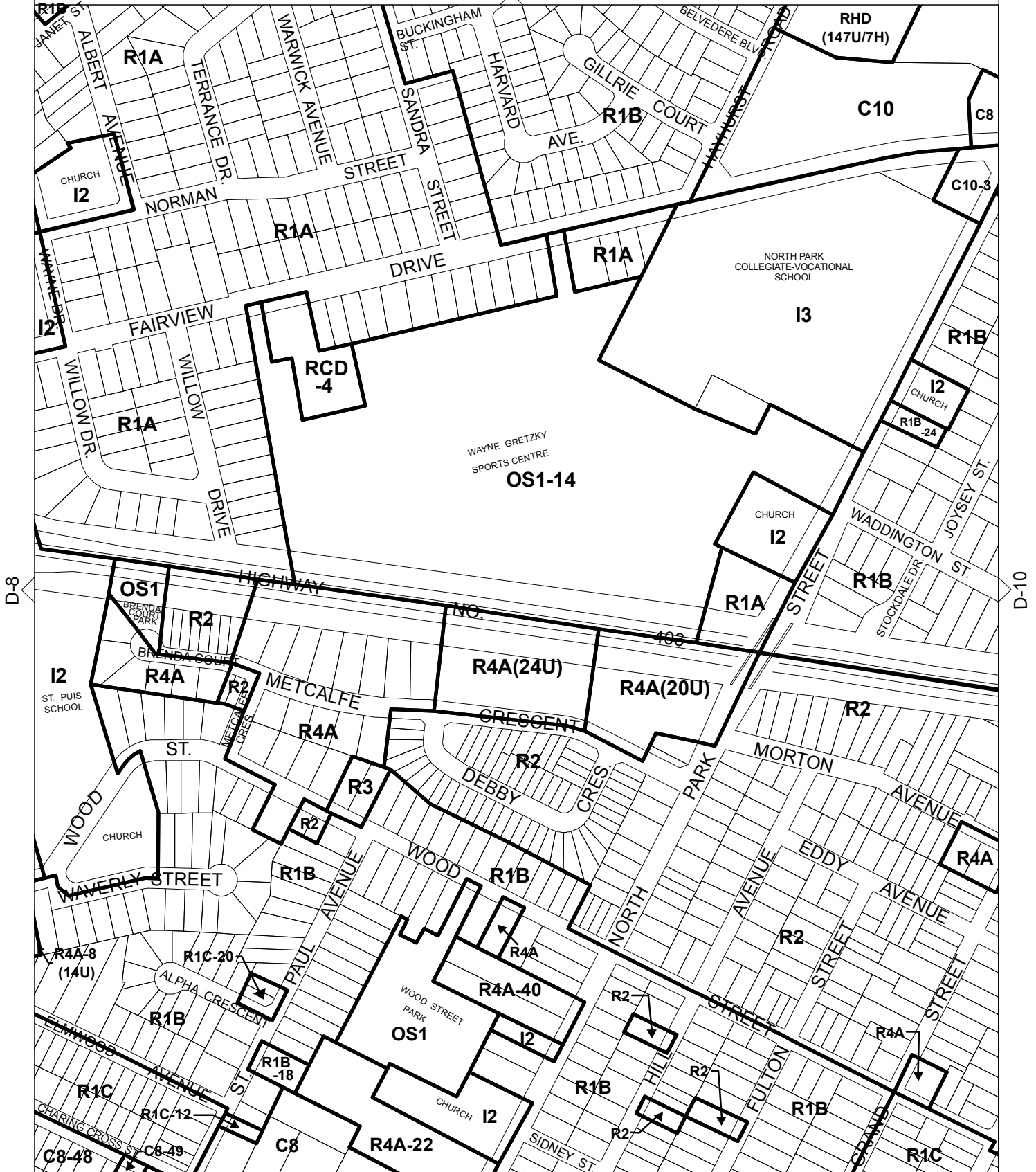
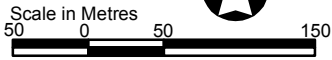


E-8



THIS SCHEDULE HAS BEEN CONSOLIDATED BY BYLAWS:

25-91	137-95	117-98	170-2000	O.M.B. Order
130-91	90-96	14-99	87-2003	1003-07
115-92	150-97	135-99	174-2004	111-2009
18-94	6-98	28-2000	158-2008	110-2014
35-95	73-98	66-2000	C-9	



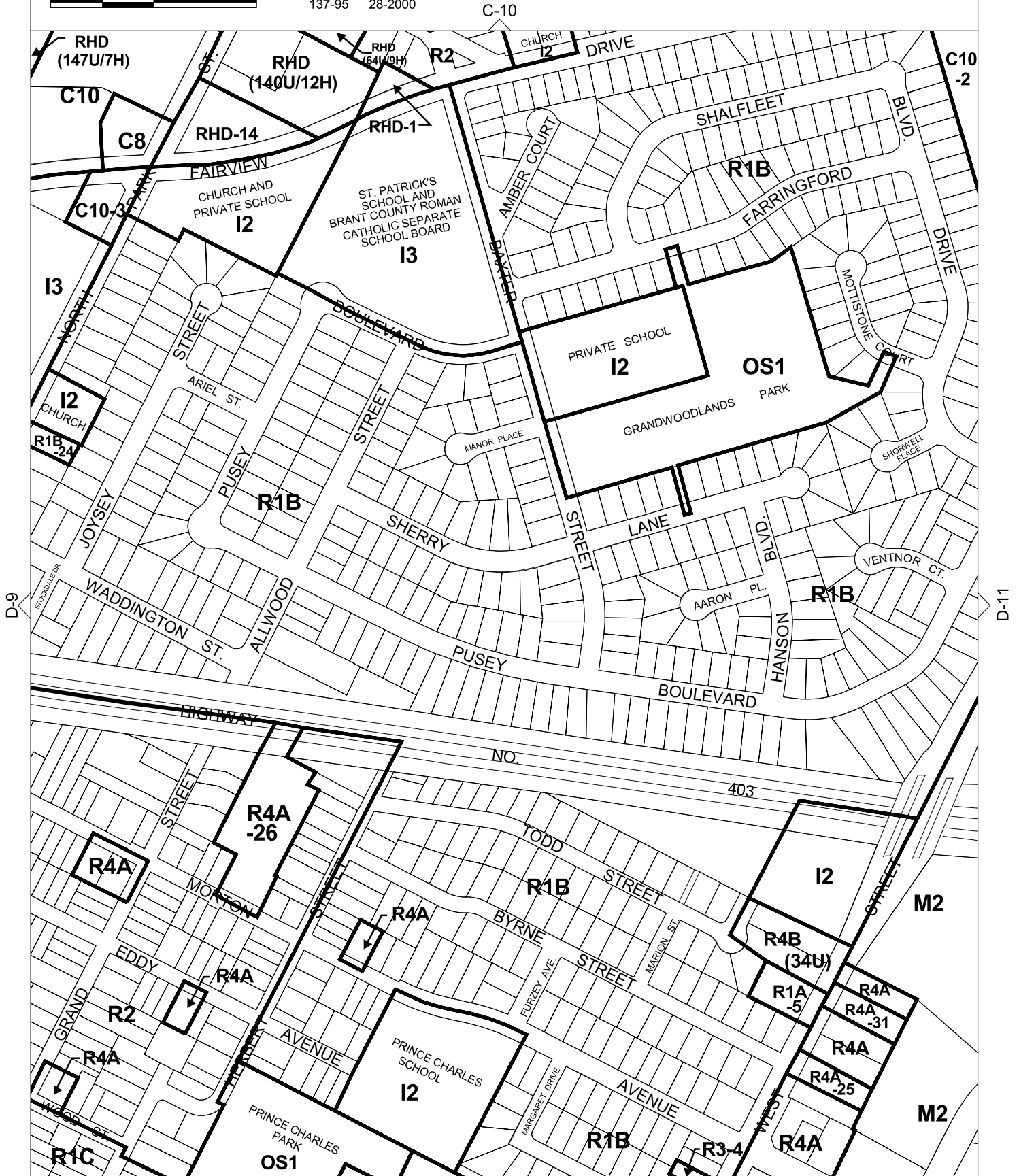
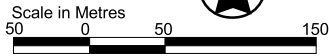
D-8

D-10

E-9

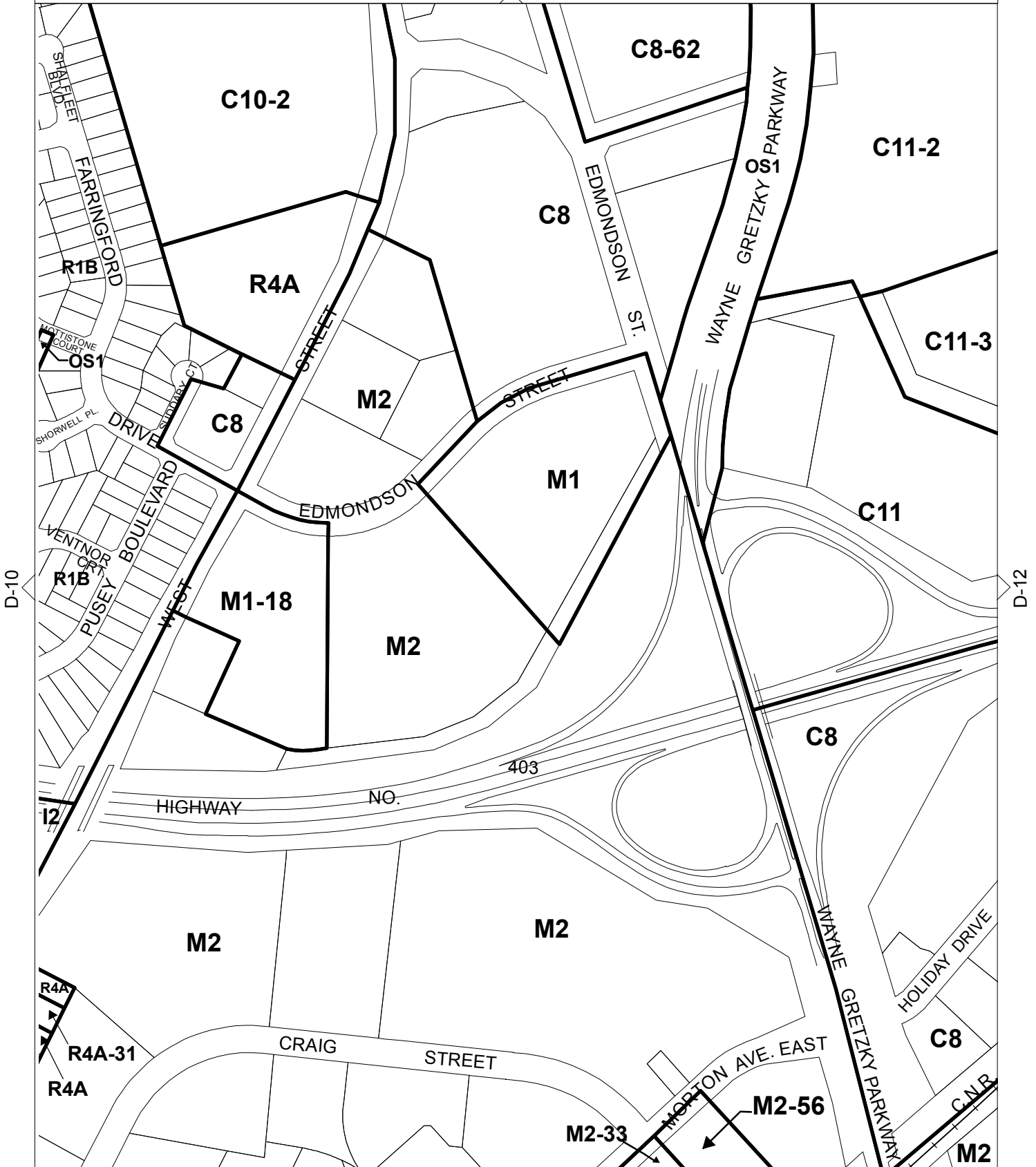
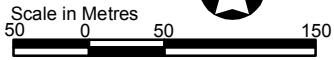
THIS SCHEDULE HAS BEEN CONSOLIDATED BY BYLAWS:

16-91	15-97	57-2000	135-2003
25-91	149-97	129-2000	
135-93	89-98	170-2000	
144-93	201-99	87-2003	
137-95	28-2000		



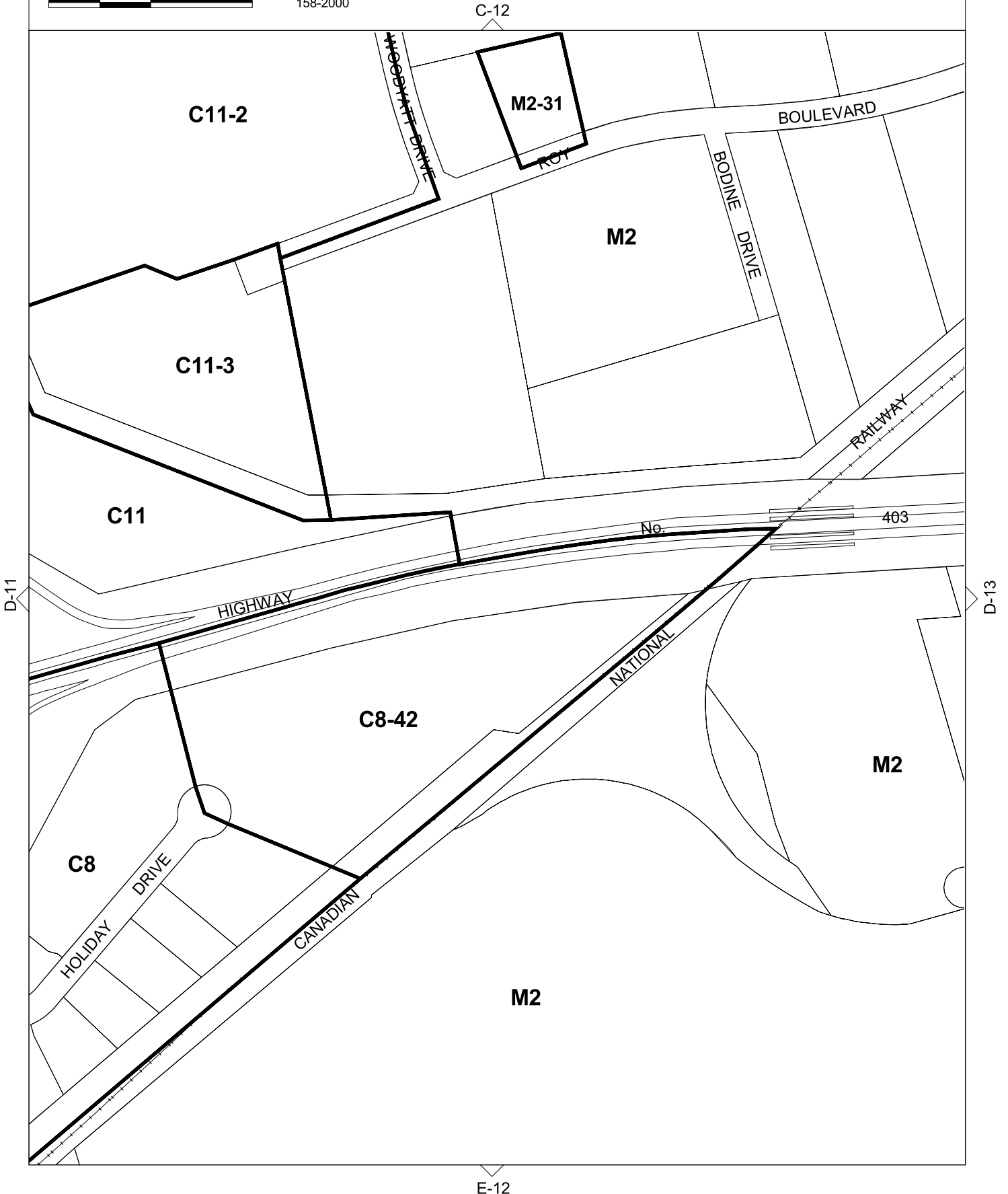
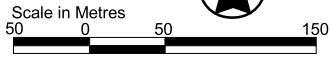
THIS SCHEDULE HAS BEEN CONSOLIDATED BY BYLAWS:

16-91	177-94	149-97	158-2000	126-2014
25-91	35-95	107-99	20-2002	
51-92	55-96	108-99	135-2003	
113-93	15-97	201-99	119-2011	
135-93	13-97	54-2000	C-11	



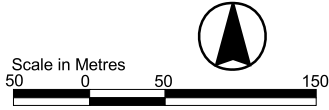
THIS SCHEDULE HAS BEEN CONSOLIDATED BY BYLAWS:

- 35-95 150-2001
- 141-96
- 26-97
- 48-99
- 158-2000



THIS SCHEDULE HAS BEEN CONSOLIDATED BY BYLAWS:

- 26-97
- 158-98
- 48-99
- 63-99
- 47-2001
- 112-2001
- 75-2010



THIS SCHEDULE HAS BEEN CONSOLIDATED BY BYLAWS:

- 48-99 27-2008
- 63-99 56-2008
- 51-99 53-2009
- 118-2000
- 166-2005
- 53-2006

