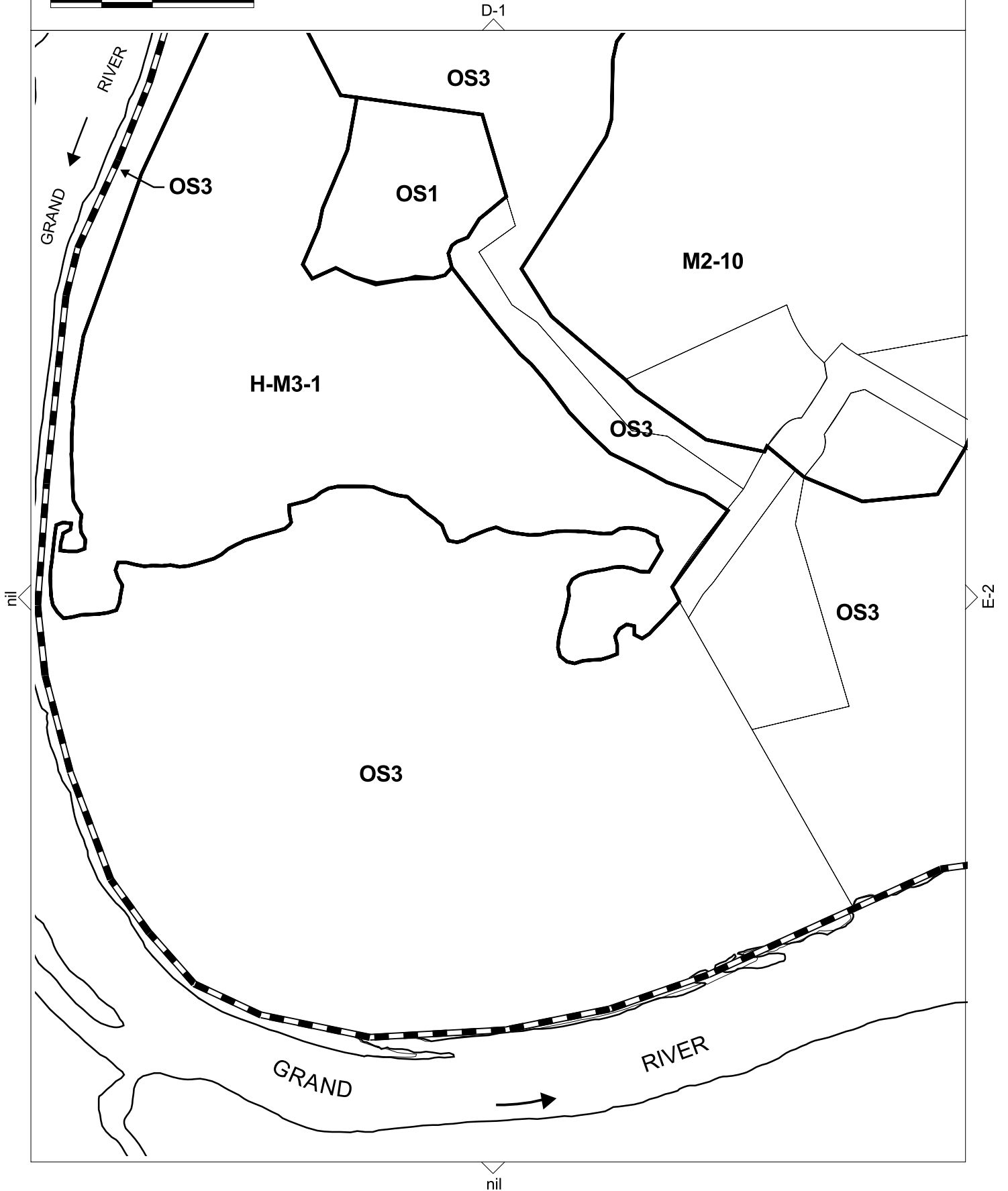
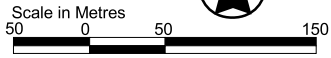


THIS SCHEDULE HAS BEEN CONSOLIDATED BY BYLAWS:

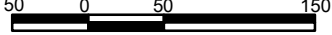
- 172-91
- 123-99
- 41-2000



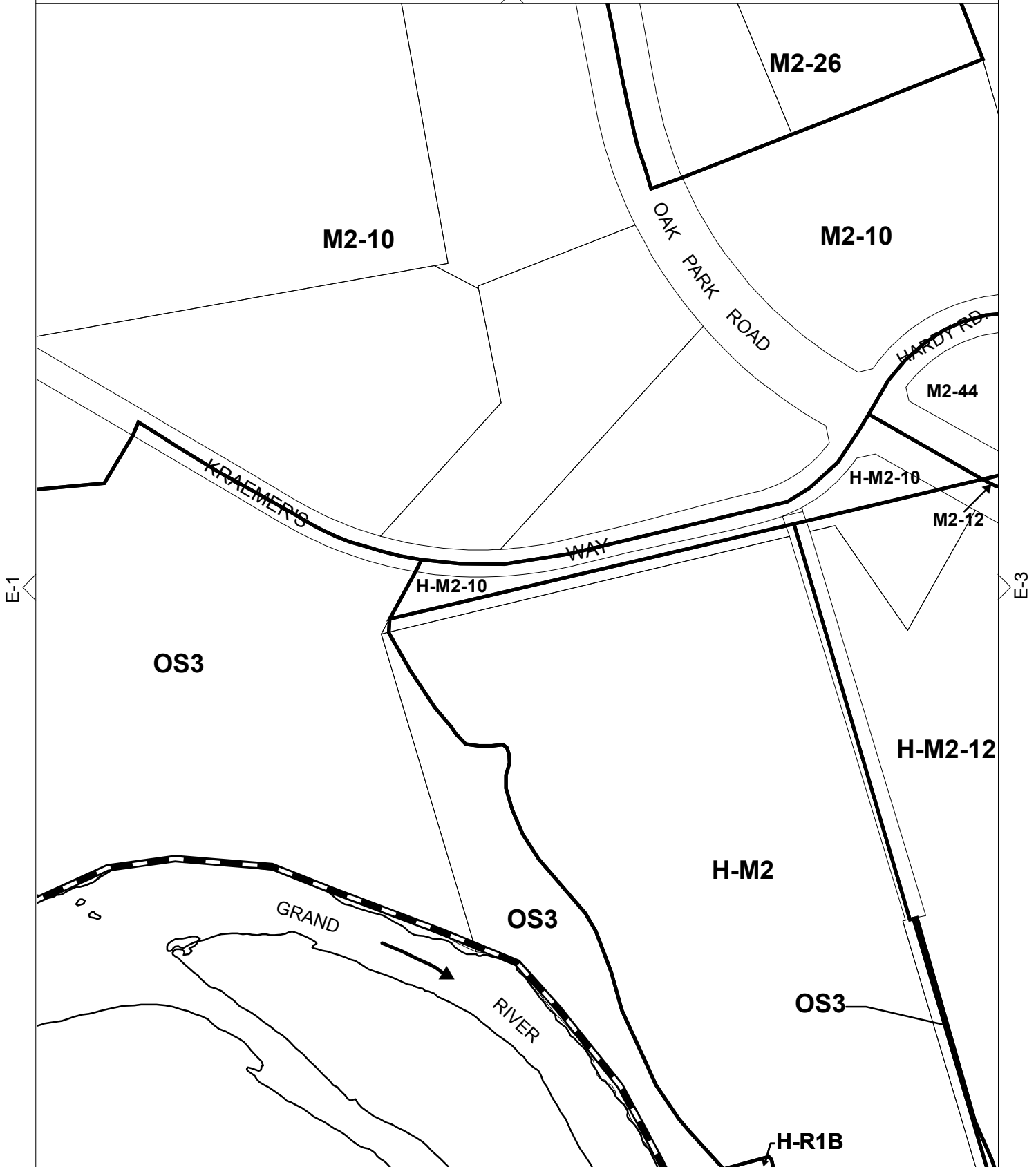
THIS SCHEDULE HAS BEEN CONSOLIDATED BY BYLAWS:

- | | | |
|----------|----------|---------|
| 172-91 | 185-2001 | 51-2015 |
| 41-2000 | 180-2003 | |
| 118-2000 | 154-2004 | |
| 171-2000 | 152-2005 | |
| 71-2001 | 153-2007 | |

Scale in Metres



D-2

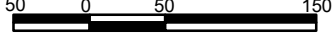


F-2

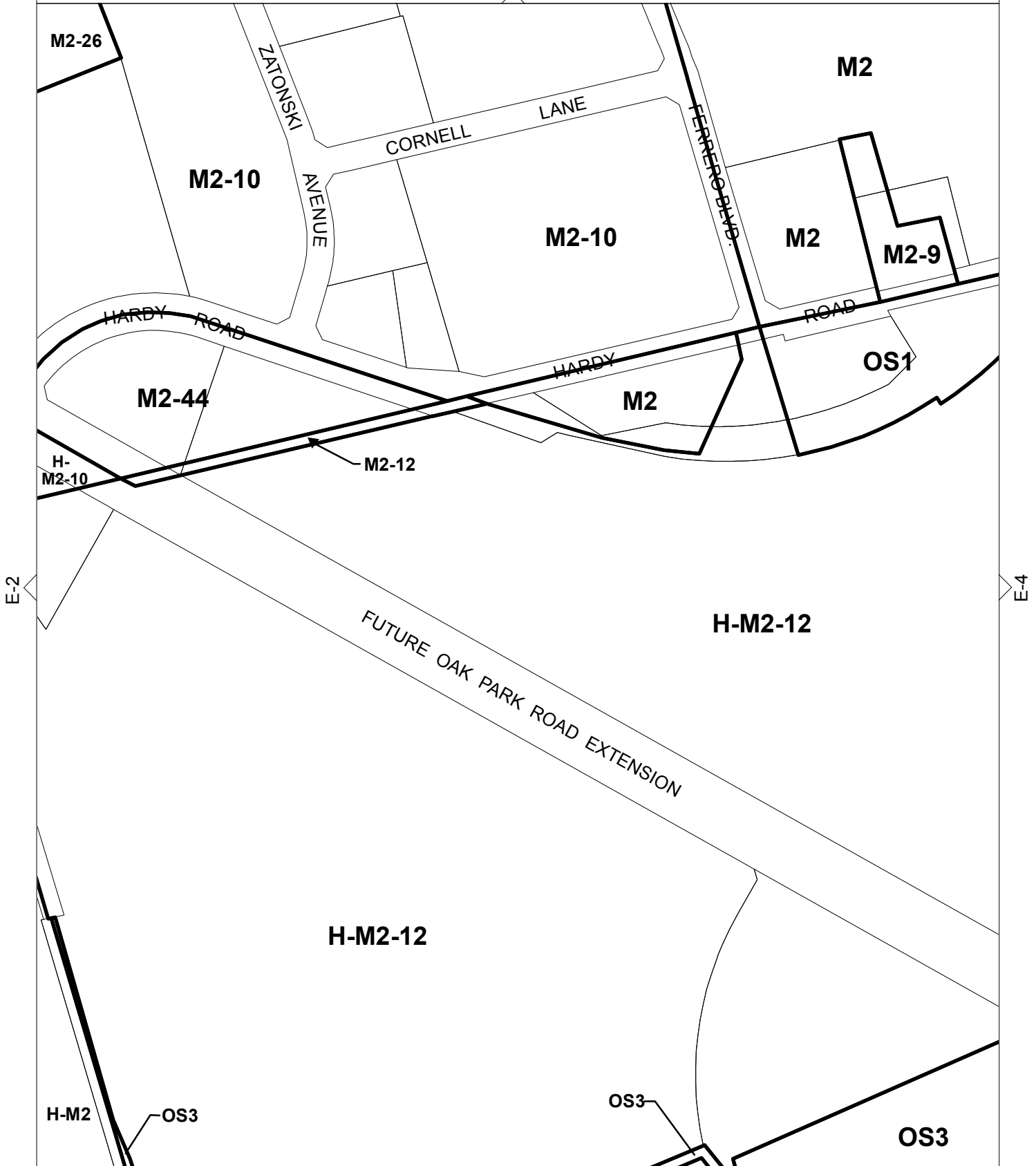
THIS SCHEDULE HAS BEEN CONSOLIDATED BY BYLAWS:

- | | | |
|---------|----------|---------|
| 25-91 | 154-2004 | 51-2015 |
| 172-91 | 152-2005 | |
| 41-2000 | 153-2007 | |
| 71-2001 | 114-2010 | |
| 97-2004 | | |

Scale in Metres



D-3



E-2

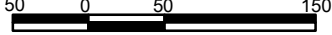
E-4

F-3

THIS SCHEDULE HAS BEEN CONSOLIDATED BY BYLAWS:

- 25-91
- 51-2015
- 172-91
- 123-99
- 97-2004
- 154-2004

Scale in Metres



D-4

OS1

M2

H-R1B

ROAD

HARDY

M2-9

OS1

H-R1B

H-M2-12

H-R1B

E-3

E-5

OS3

H-M2-12

RIVER

H-R1B

FUTURE OAK PARK ROAD
EXTENSION

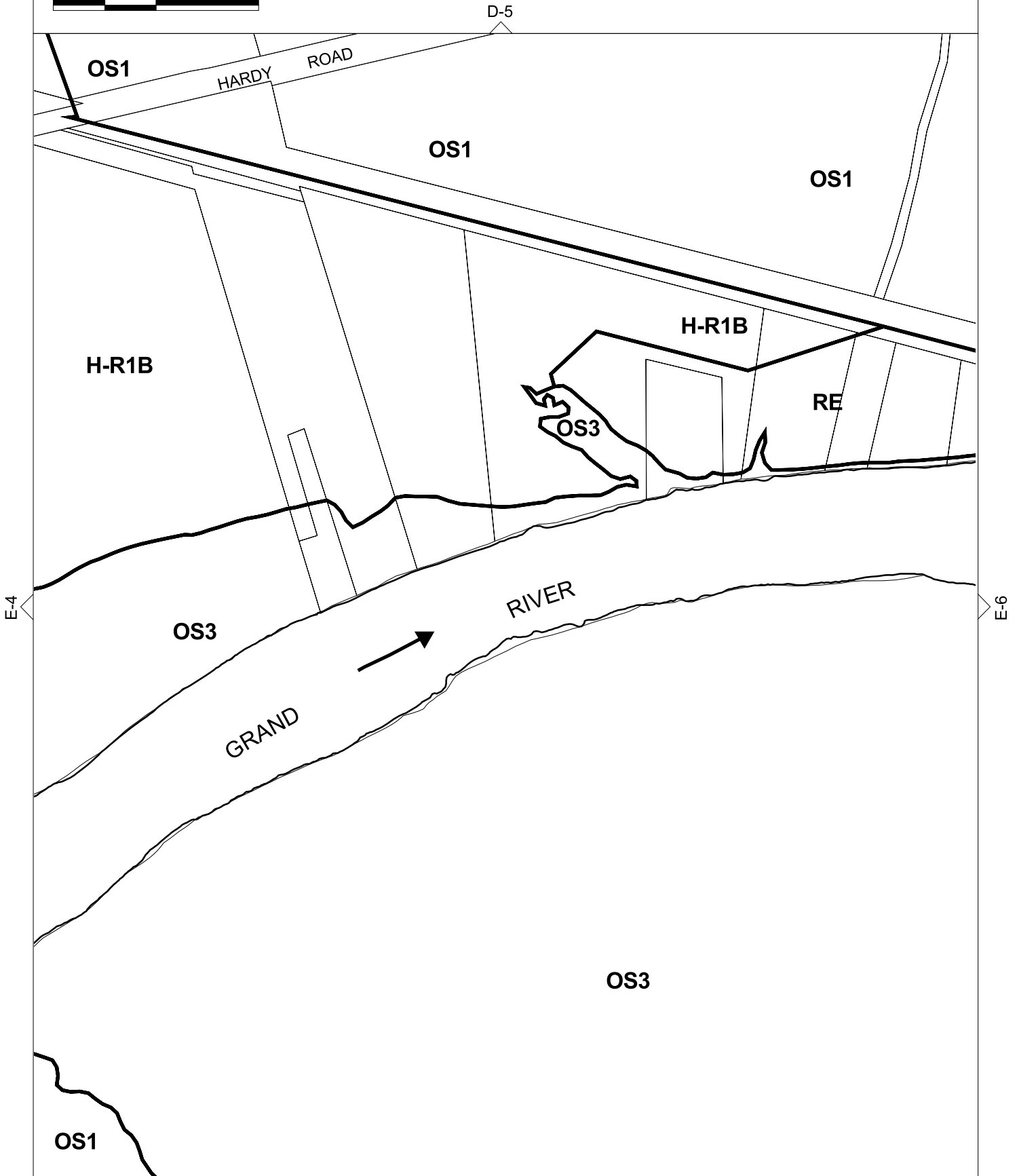
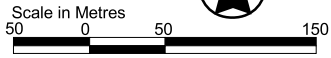
GRAND

OS3

OS1

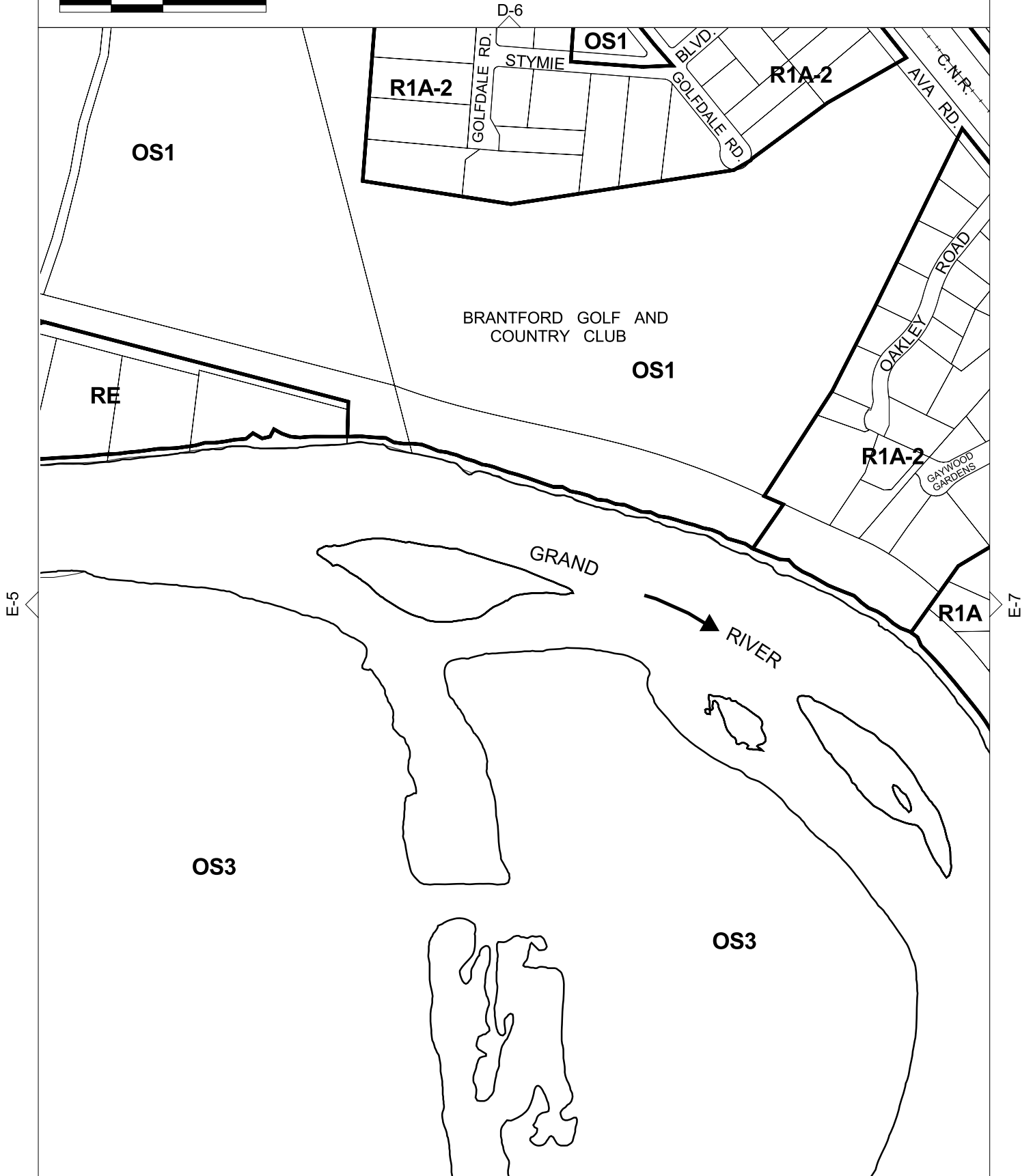
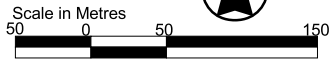
F-4

THIS SCHEDULE HAS BEEN CONSOLIDATED BY BYLAWS:
25-91
172-91
123-99



THIS SCHEDULE HAS BEEN CONSOLIDATED BY BYLAWS:

172-91
39-96
123-99



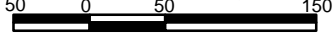
E-5

E-7

F-6

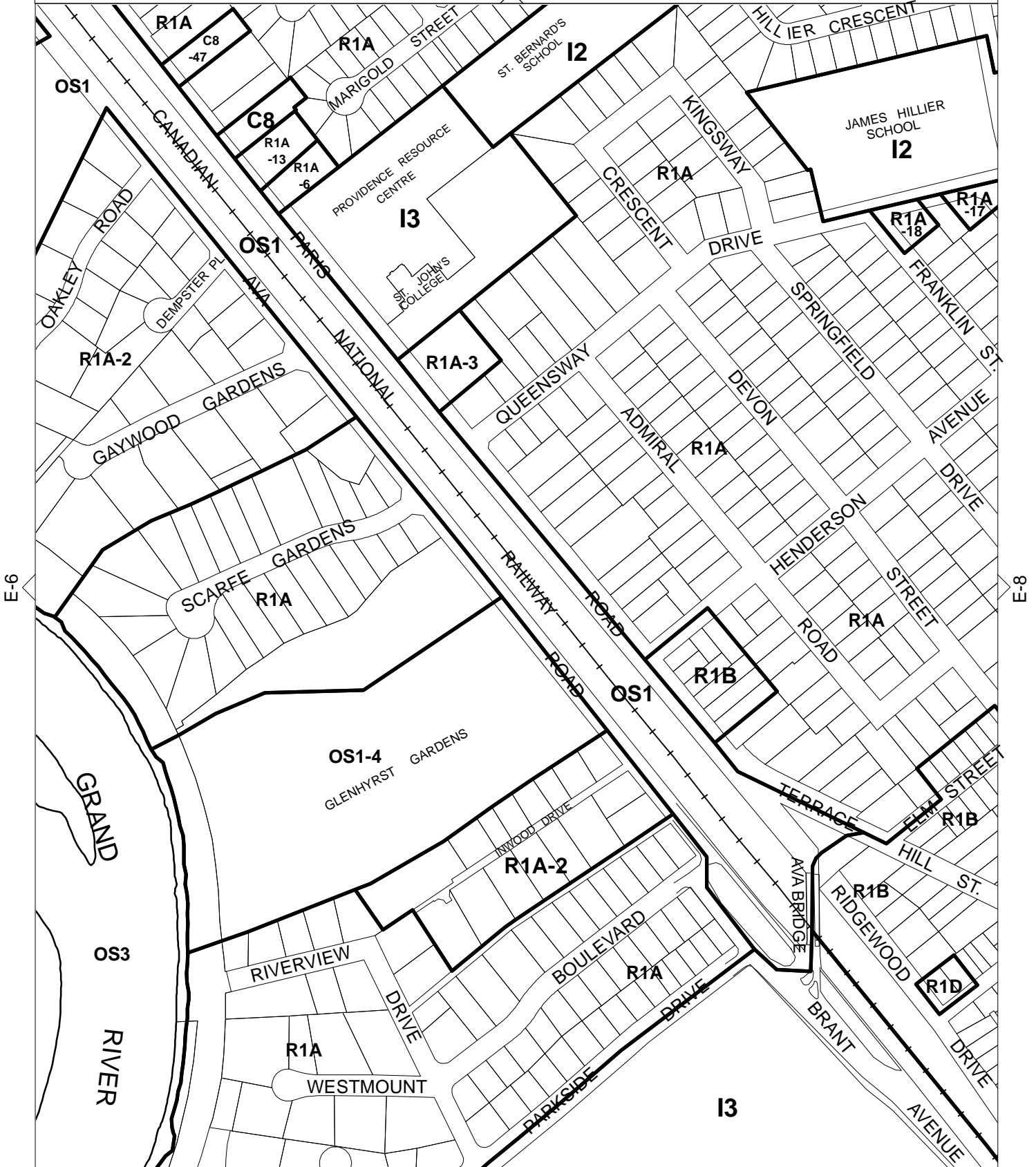
THIS SCHEDULE HAS BEEN CONSOLIDATED BY BYLAWS:

Scale in Metres



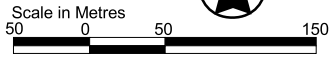
| | |
|--------------|---------|
| 25-91 | 35-95 |
| 131-91 | 119-98 |
| O.M.B. ORDER | 123-99 |
| R910193 | 45-2004 |
| 115-92 | 53-2013 |

D-6

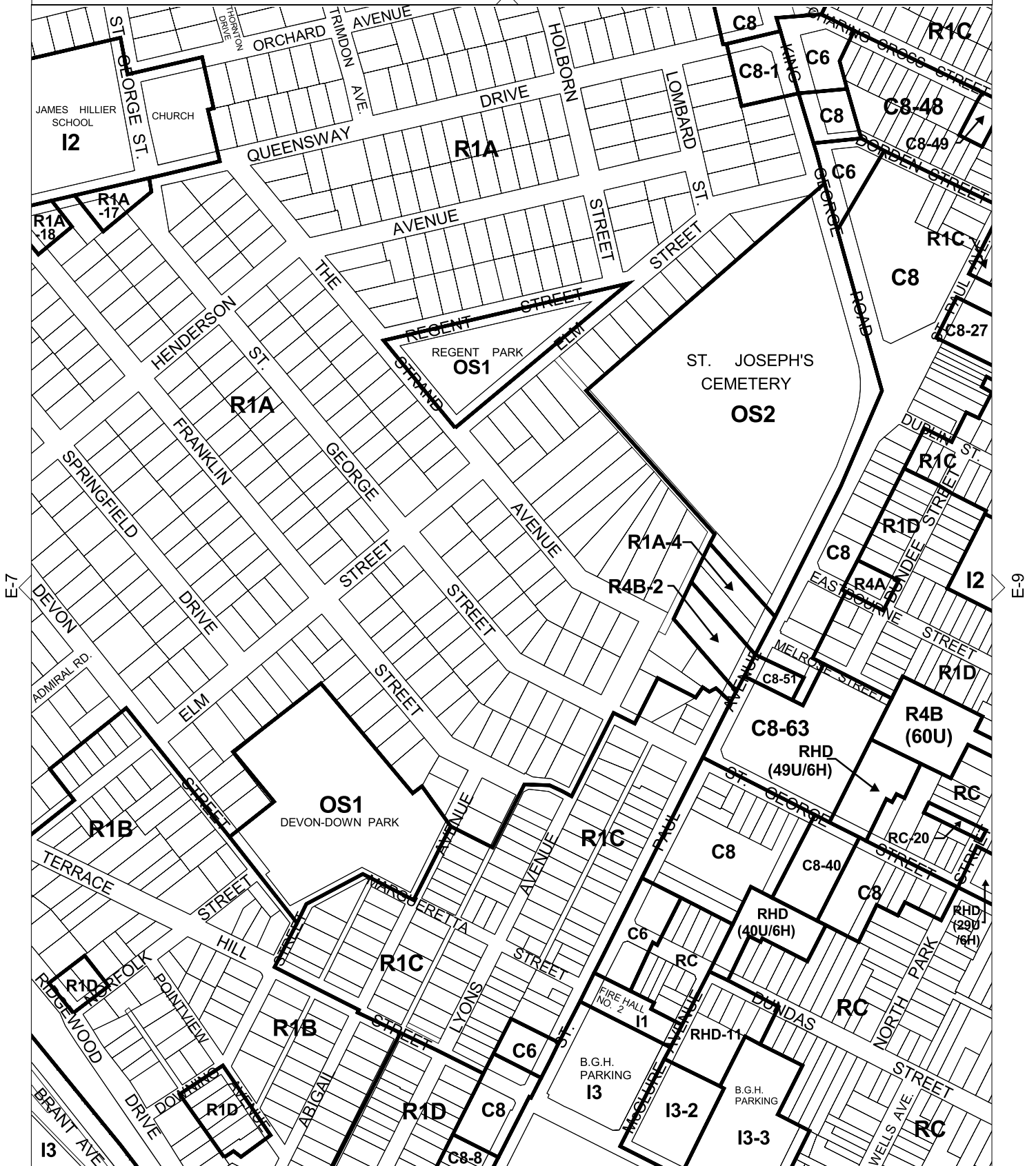


THIS SCHEDULE HAS BEEN CONSOLIDATED BY BYLAWS:

- 25-91 137-95 45-2004
- 151-91 14-97
- 131-94 55-2000
- 2-95 134-2001
- 35-95 134-2003



D-8

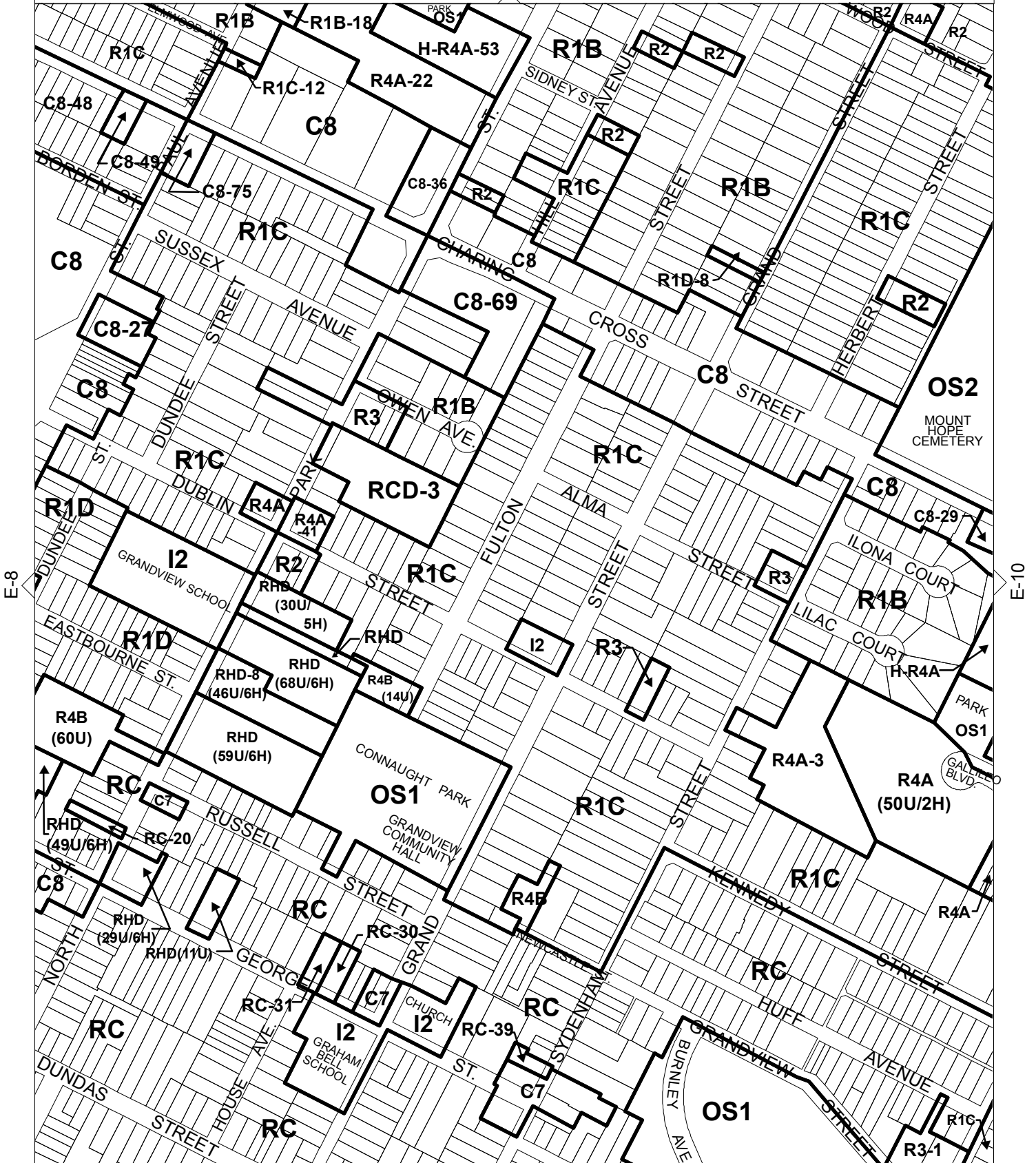
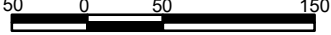


F-8

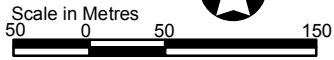
THIS SCHEDULE HAS BEEN CONSOLIDATED BY BYLAWS:

| | | | | |
|--------|--------|---------|----------|----------|
| 25-91 | 50-94 | 75-98 | 111-2001 | 154-2008 |
| 1-92 | 138-94 | 117-98 | 179-2003 | 99-2009 |
| 115-92 | 35-95 | 14-99 | 109-2004 | 156-2011 |
| 86-93 | 137-95 | 55-2000 | 77-2006 | 76-2016 |
| 49-94 | 24-97 | 66-2000 | D-9 | |

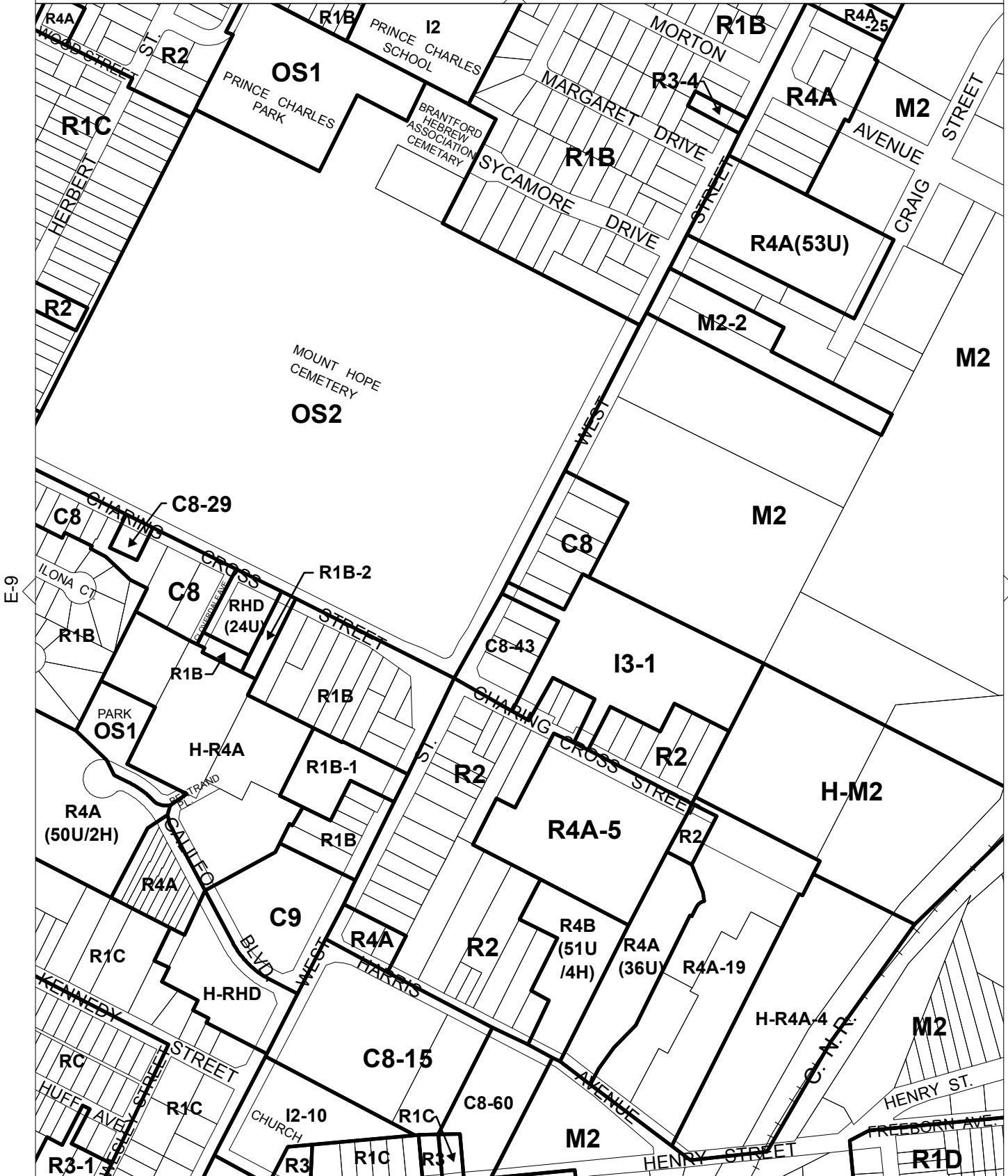
Scale in Metres



THIS SCHEDULE HAS BEEN CONSOLIDATED BY BYLAWS:

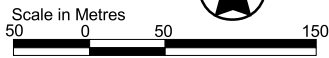


| | | |
|--------------|--------|----------|
| 25-91 | 49-94 | 209-99 |
| 1-92 | 35-95 | 129-2000 |
| O.M.B. ORDER | 74-95 | 2-2015 |
| R920021 | 6-98 | |
| 34-93 | 201-99 | D-10 |

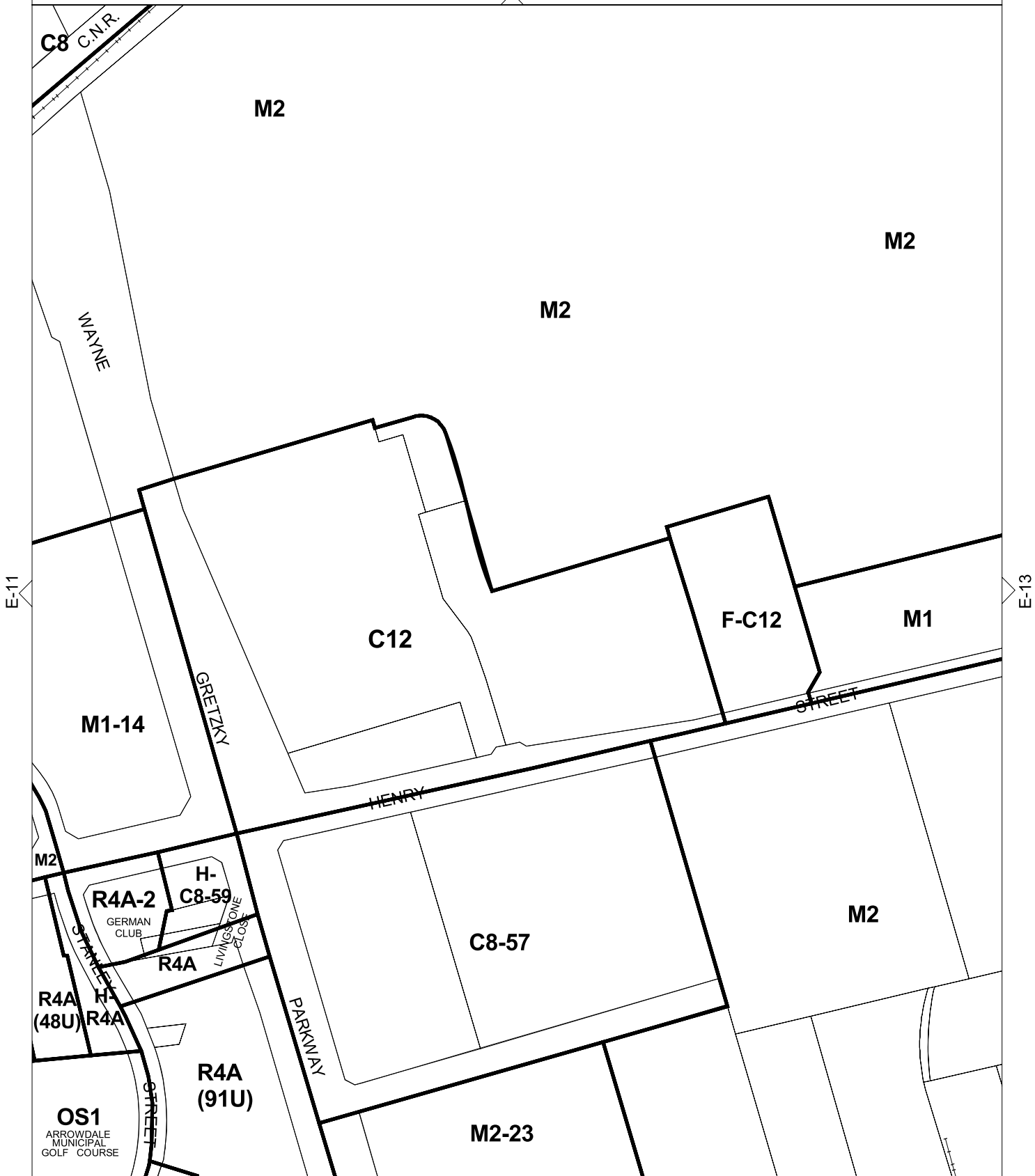


THIS SCHEDULE HAS BEEN CONSOLIDATED BY BYLAWS:

- 135-92 122-99 24-2007
- 35-95 156-99 90-2010
- 88-96 157-2000 91-2010
- 54-97 55-2005
- 71-98 139-2006



D-12



E-11

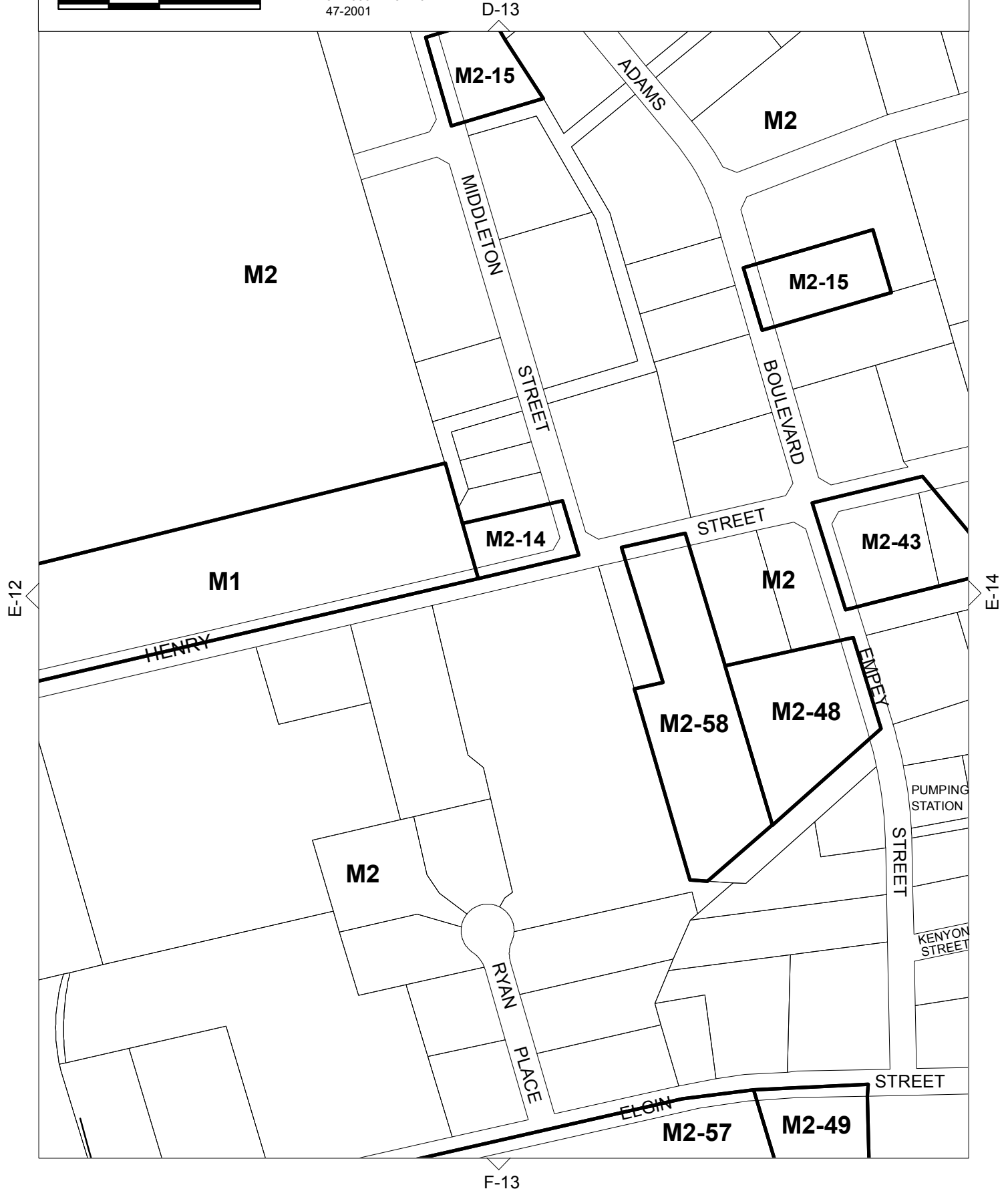
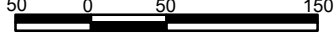
E-13

F-12

THIS SCHEDULE HAS BEEN CONSOLIDATED BY BYLAWS:

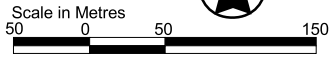
- 38-92 154-2007 102-2015
- 158-98 20-2011
- 63-99 155-2011
- 157-2000 137-2014
- 47-2001

Scale in Metres

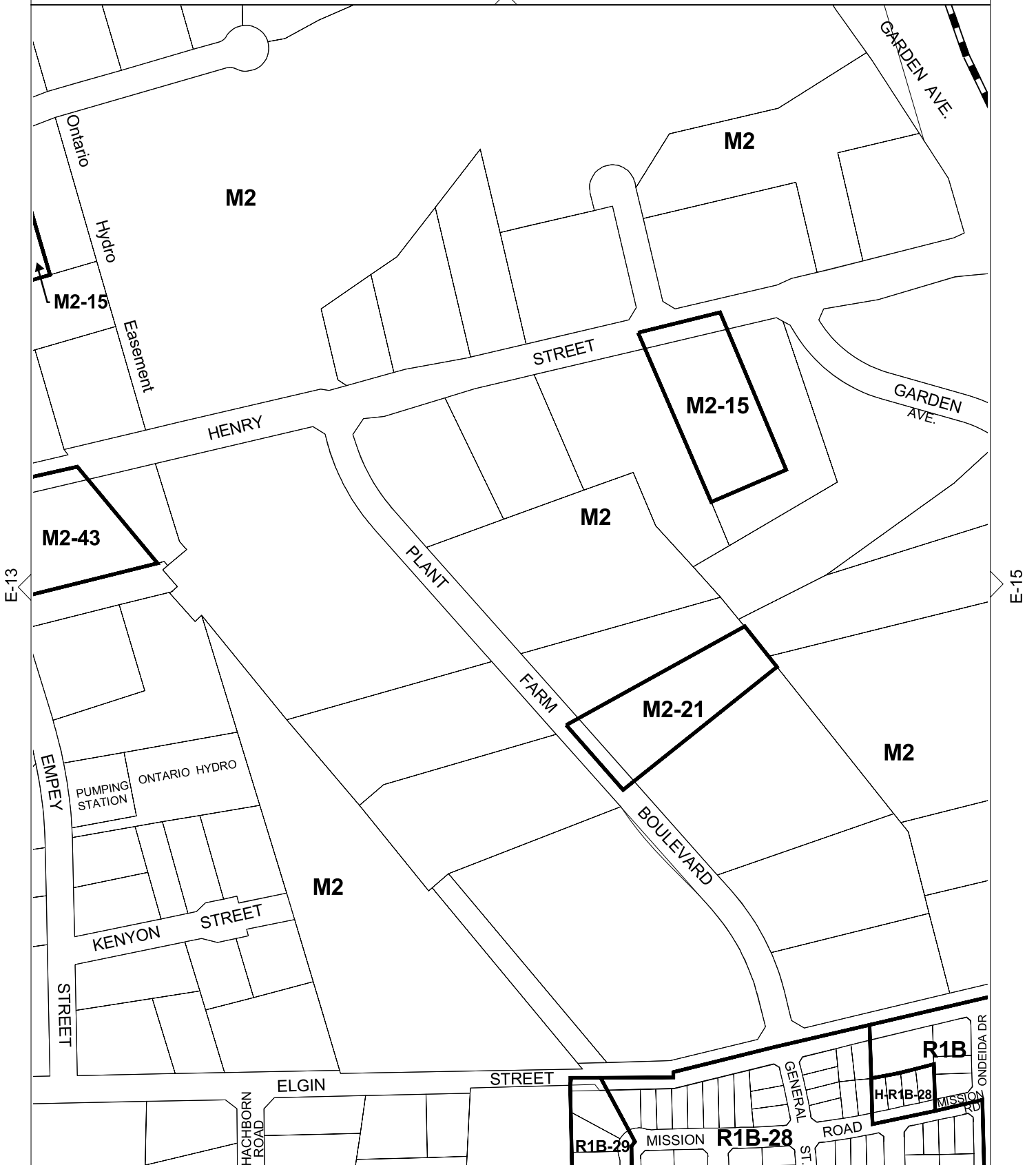


THIS SCHEDULE HAS BEEN CONSOLIDATED BY BYLAWS:

- 128-94 118-2000 15-2006
- 11-96 163-2000 153-2006
- 140-96 41-2005 154-2007
- 158-98 151-2005
- 63-99 166-2005



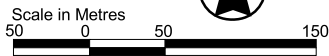
D-14



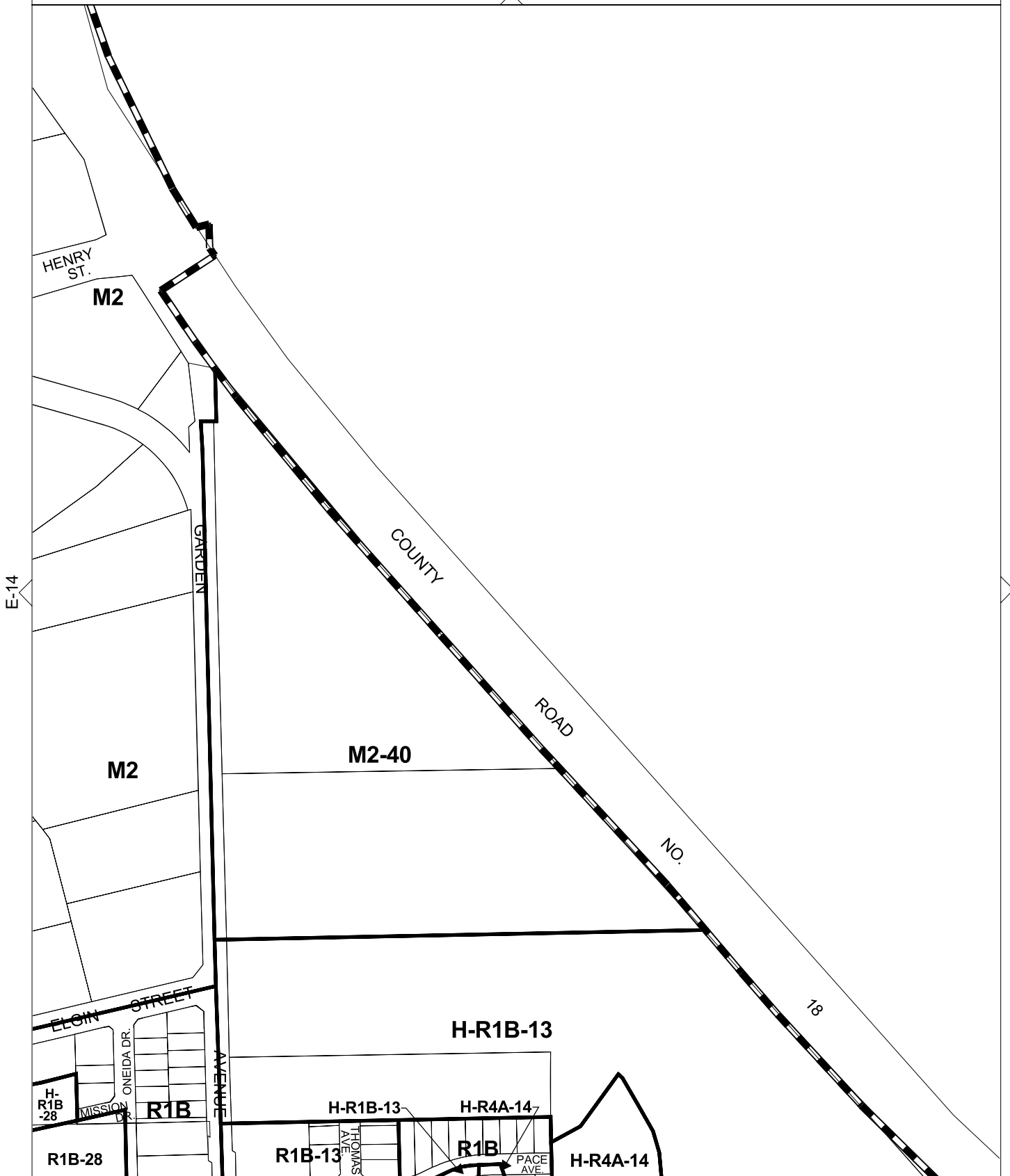
F-14

THIS SCHEDULE HAS BEEN CONSOLIDATED BY BYLAWS:

- 25-91 163-2000 153-2006
- 60-92 110-2004
- 105-95 200-2004
- 140-96 166-2005
- 118-2000 140-2006



nil



nil