

WELCOME

TRANSIT TERMINAL SITE SELECTION STUDY

***FIRST STEP IN THE PROCESS:
PUBLIC INFORMATION CENTRE
FEBRUARY 2, 2012***

***WE NEED YOUR INPUT AND COMMENTS ON THE
SELECTION OF A NEW TRANSIT TERMINAL SITE***

- ***Why a new terminal?***
- ***What is the important criteria in selecting a site or comparing alternative sites?***
- ***What items would you like to see in a new terminal?***



TERMINAL SITE SELECTION STUDY

STUDY PURPOSE

- To review, assess and select most appropriate location for the downtown Brantford Transit terminal.

WHY IS A NEW TERMINAL NEEDED

- Existing terminal is inadequate
- Need to provide room for growth
- Expansion of existing terminal would result in loss of parking which would need to be added elsewhere at an additional cost

PROCESS AND TIMELINE

- Consult with key stakeholders about transit needs and plans.
- Review and assess identified sites.
- Investigate and analyze sites based on a range of criteria including:
 - site conditions
 - ownership
 - cost
- Prepare detailed design and cost estimates
- Recommend most appropriate site
- Report To Council, then to Stakeholders
- Study completion - May 2012

Consulting Firm - IBI Group



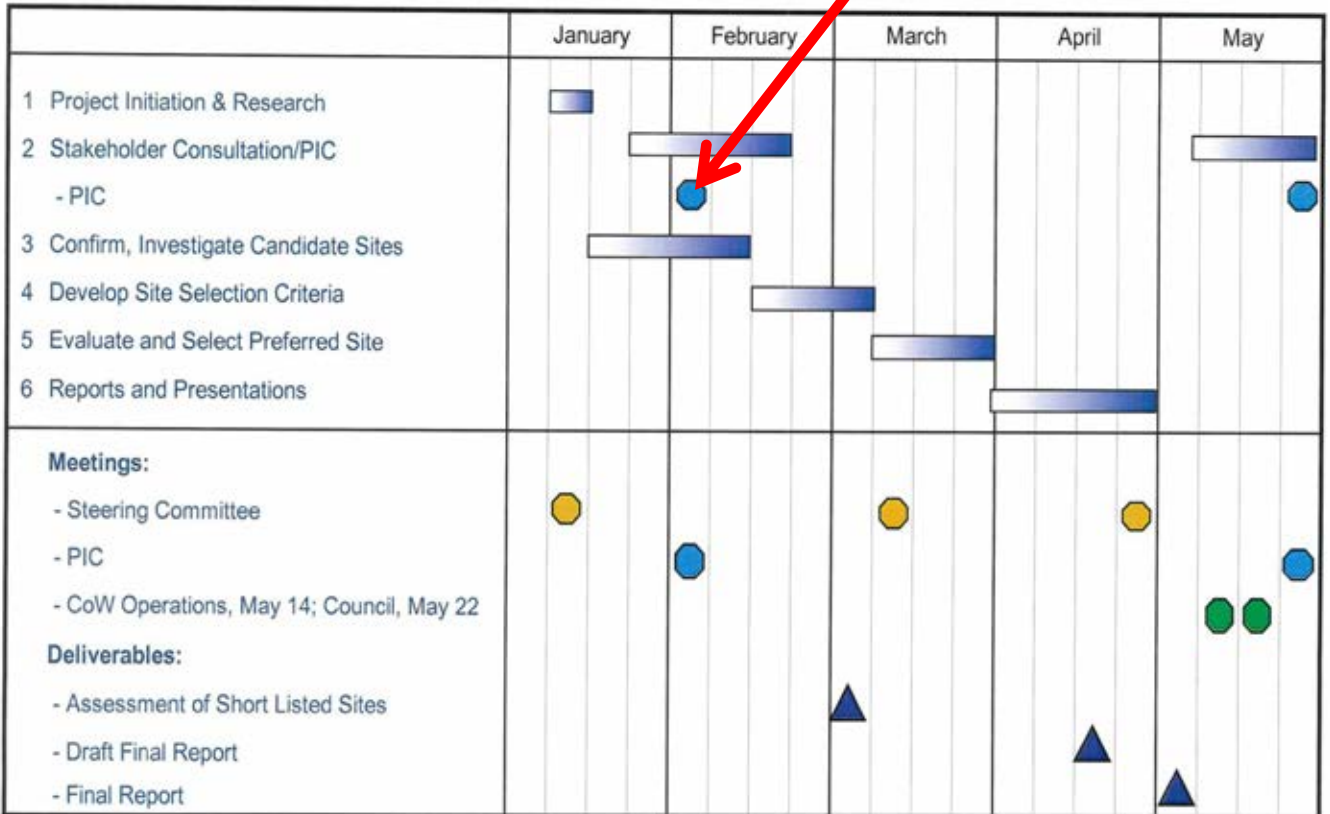
TRANSIT TERMINAL SITE SELECTION STUDY

STUDY SCHEDULE

WE ARE HERE

FEB 2, 2012

PUBLIC INFORMATION CENTRE



TRANSIT TERMINAL SITE SELECTION STUDY

SITE SELECTION EVALUATION CRITERIA

Site Size and Shape - Ability to accommodate the future transit terminal and other transportation provider needs on the site

Transit operational cost impact –assessment of the relative impact on transit operating costs (additional running time, requirement to alter routes)

Customer convenience –safety and security, proximity to surrounding area, ability to provide customer convenience (lighting, security) and ability to easily access the site

Traffic –on surrounding road network, need for traffic control/transit priority measures, or, impact of surrounding traffic and activities on transit terminal

Road infrastructure – need for changes to the design of the adjacent roadways

Active Transportation/Pedestrian Access – ability to integrate with City active transportation plans and ease of pedestrian access

Impact on Adjacent Land Uses–potential influence on surrounding land use and property values

Expandability – ability to expand the facility to meet future needs

Integration with other transportation services – ability to integrate other transportation services on the site

Legal, Zoning – suitability of zoning and ability to re-zone as necessary

Land acquisition – ease of acquisition

Site Remediation - site condition and requirement for remediation

Implementability – ability to proceed with the facility on the selected site



TERMINAL DESIGN CRITERIA

- 18 bays/platforms for Transit, GO Transit and Greyhound including two bays for future transit service expansion.
- Accommodate 45ft and double deck buses for GO Transit.
- 50% increase in the size of the terminal building based on preliminary identification of space requirements for transit staff, office and retail functions (Existing building is 330 m²).
- Safe pedestrian access to/from the site and terminal with minimal interaction with either traffic or bus movements on or adjacent to the site.
- Design of the terminal platforms (bus bays) should permit for independent entry and exit from each bay position without the need for the bus ahead to depart first (or buses to back up)

WE INVITE YOUR INPUT

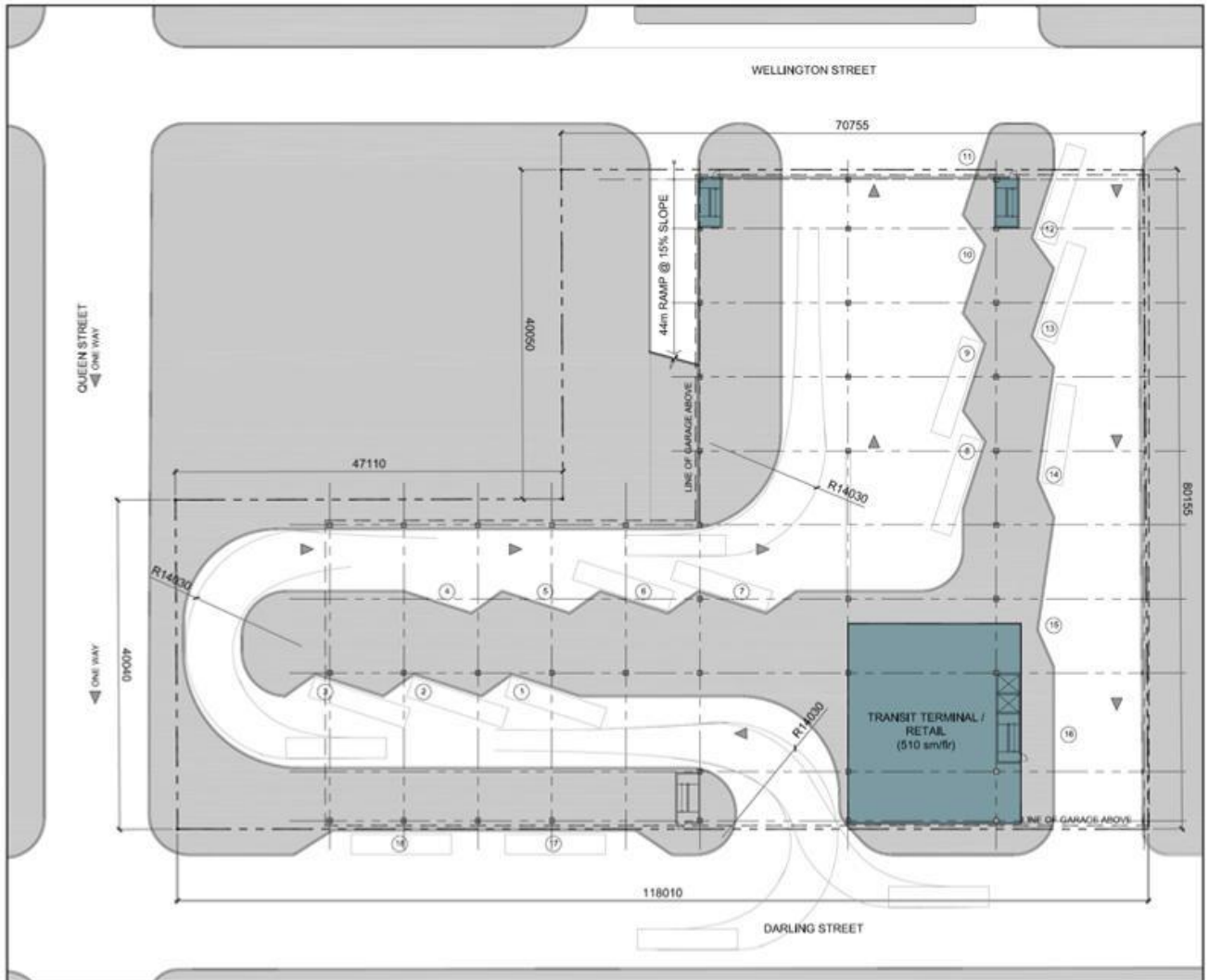
- What are the most important criteria in considering a location for a Transit terminal?

- What features are important in a new Transit terminal?
 - Passenger waiting area
 - Ticket/information counter
 - Electronic information display boards
 - Dispatch/Inspector office
 - Employee area
 - Coffee shop
 - Variety Store
 - Dry Cleaner
 - Flower shop
 - Other ?

TRANSIT TERMINAL SITE SELECTION STUDY

TERMINAL DESIGN EXAMPLES

2009 STUDY



CONCEPT 1 – CONTINUOUS PLATFORM

TRANSIT TERMINAL SITE SELECTION STUDY

TRANSIT HUBS ARE PEOPLE PLACES



TRANSIT TERMINAL SITE SELECTION STUDY

NEXT STEPS

- Consultation with stakeholders – May 2012***
- Evaluate sites***
- Develop terminal concepts and costs***
- Select a preferred location***