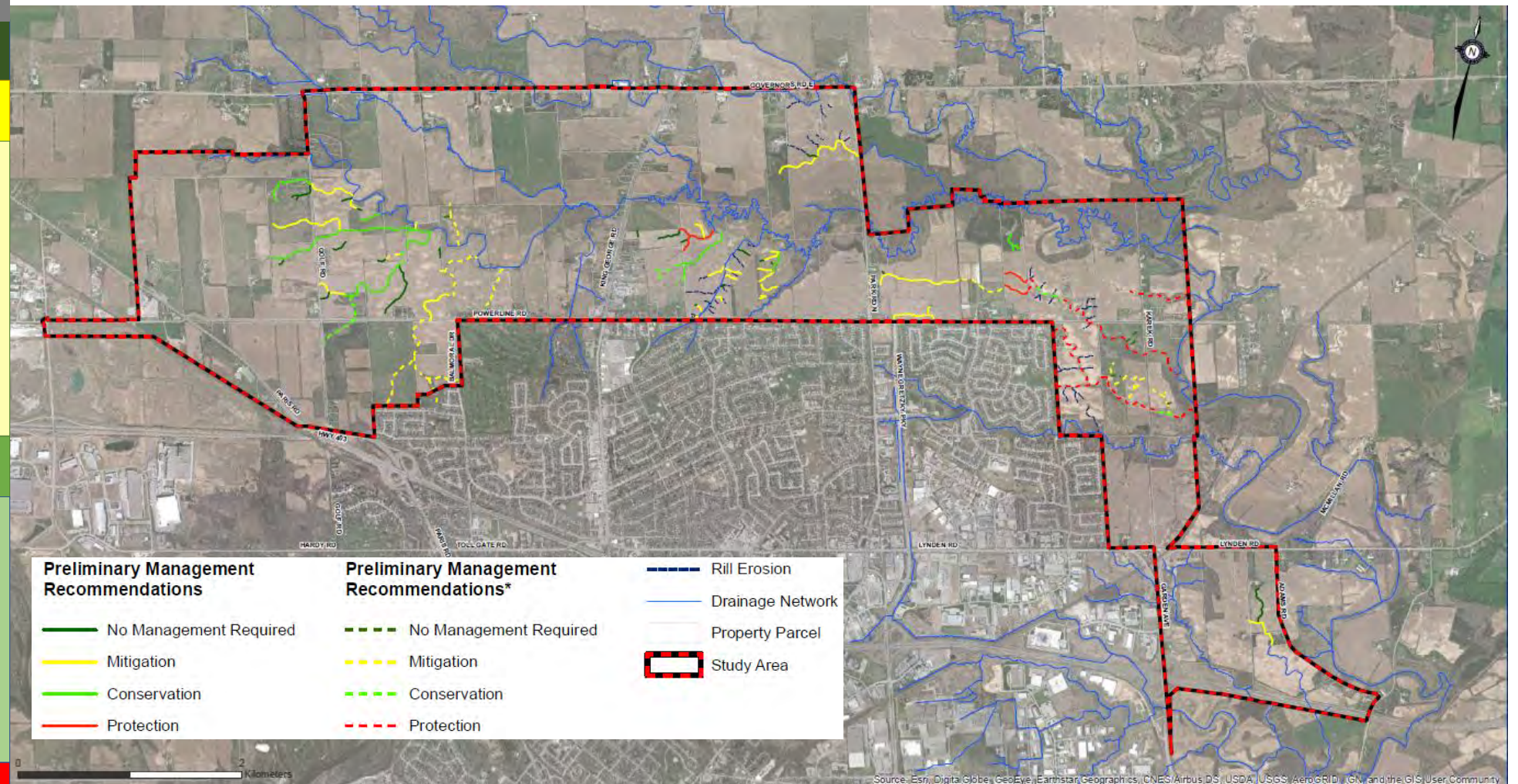




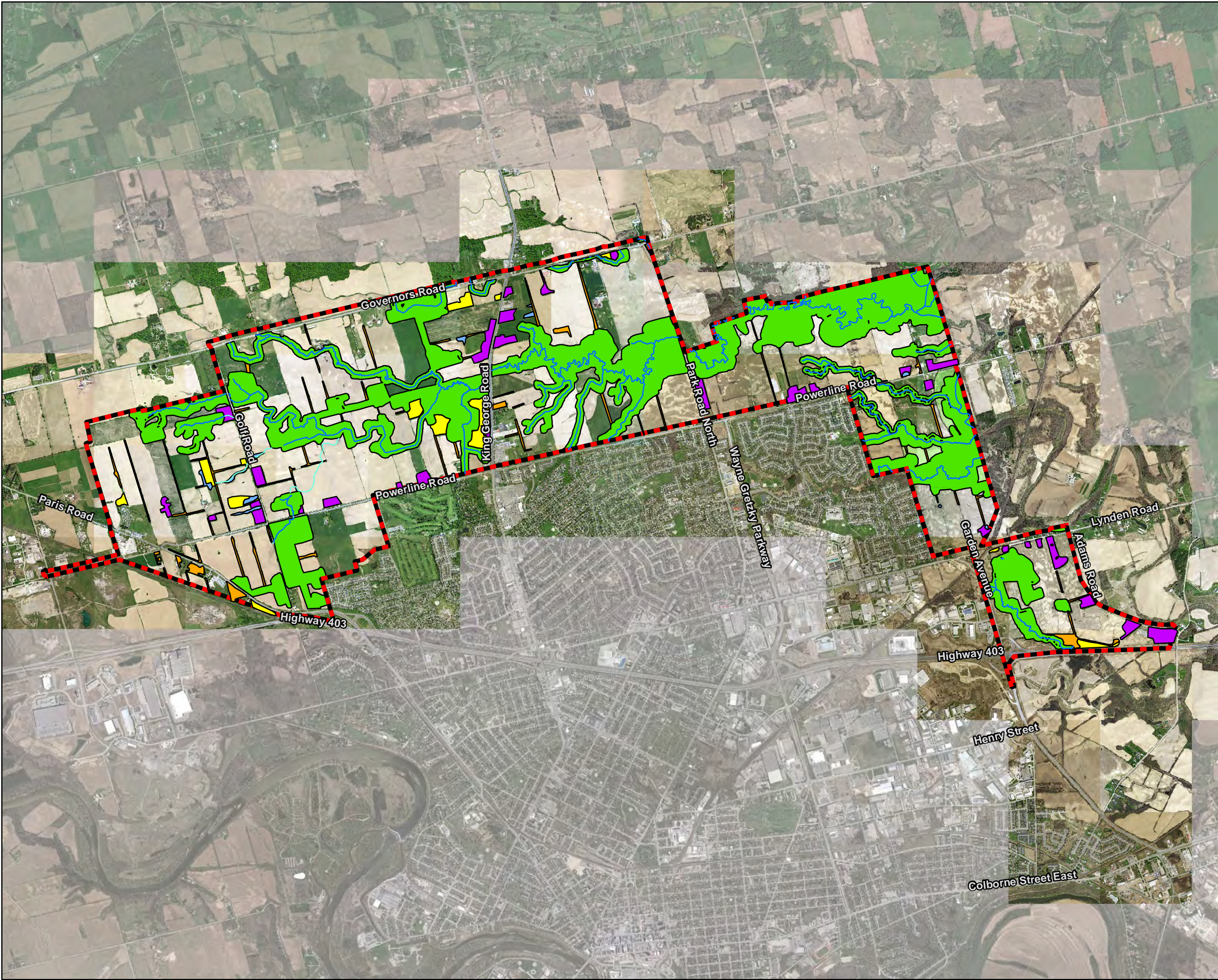
MANAGEMENT STRATEGY (CVC/TRCA (2014) definitions)	
No Management Required	
Mitigation	
✓	Replicate or enhance function through enhanced lot level conveyance measures
✓	Replicate functions by lot level conveyance measures connected to natural heritage systems and/or Low Impact Development (LID) stormwater options
✓	Replicate on-site flow and outlet flows to maintain feature function (e.g., vegetated swales, bioswales, etc.
Conservation	
✓	Maintain, relocate and/or enhance drainage feature and its riparian corridor
✓	Maintain or replace external flows
✓	Maintain or replace on-site flows using mitigation measures and/or wetland creation
✓	Natural channel design to maintain/ enhance overall productivity of the feature
✓	Feature must connect to downstream downstream
Protection	
✓	Protect / enhance the existing feature and its riparian corridor, groundwater discharge or wetlands
✓	Maintain hydroperiod
✓	Natural channel design to restore and enhance existing habitat features
✓	Design and locate the SWM system to avoid impacts to the feature

North Study Area



*Site access to these features occurred after April 2018 and thus the full three season Headwater Drainage Feature Assessment was incomplete. **Further assessment is required to confirm appropriate management strategies for these features.**

** Permission from the GRCA is required to develop in river or stream valleys, wetlands, shorelines or hazardous lands; alter a river, creek, stream or watercourse; or interfere with a wetland. Within these regulated areas, GRCA Policies for the Administration of the Development, Interference with Wetlands and Alterations to Shorelines and Watercourses Regulation apply (Ontario Regulation 150/06). Recommendations derived from the HDF assessment are in addition to, but do not supersede, GRCA regulatory requirements.

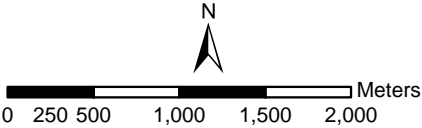


Legend

- Study Area
- Watercourse to be Protected
- Watercourse to be Conserved – channel form and location may vary
- Natural Heritage System
- NHS Area - Undifferentiated (Growth Plan)

Other Environmental Features

- Residential (ornamental plantings, cultural vegetation)
- Cultural (meadow, thicket, early-successional woodland)
- Wetland
- Woodland/Hedgerow



Data Source
- City of Brantford
- GRCA

PLAN B Natural Heritage
Landscape Ecology & Natural Heritage Planning
176 Fellows Crescent
Waterdown, ON
L0R 2H3

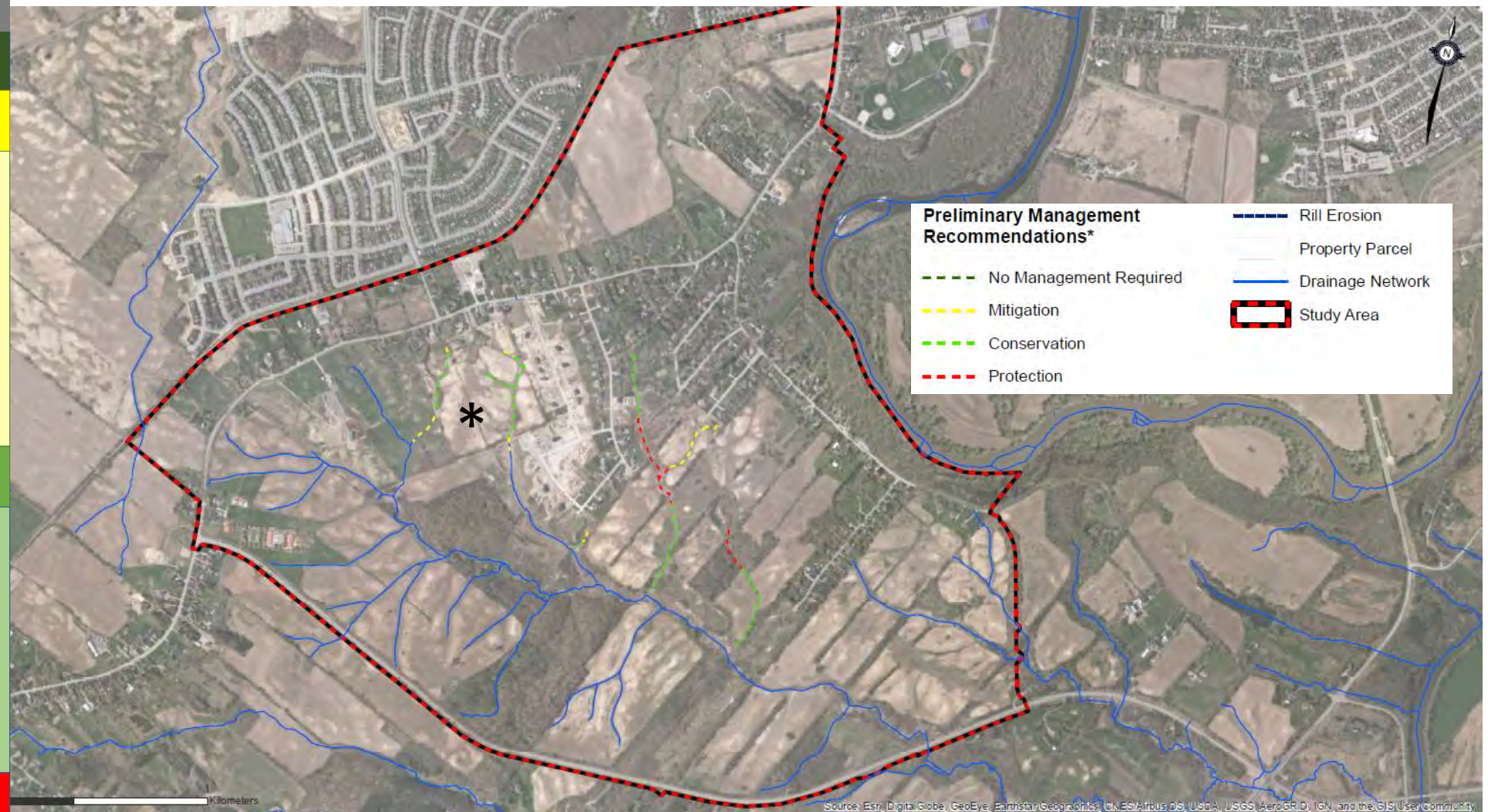
City of Brantford North
Other Environmental Features

Project #	2017-146	Figure # X
Date	January 2019	
Scale	1 : 40,000	
Prepared By: JJJ	Verified By: BDB	



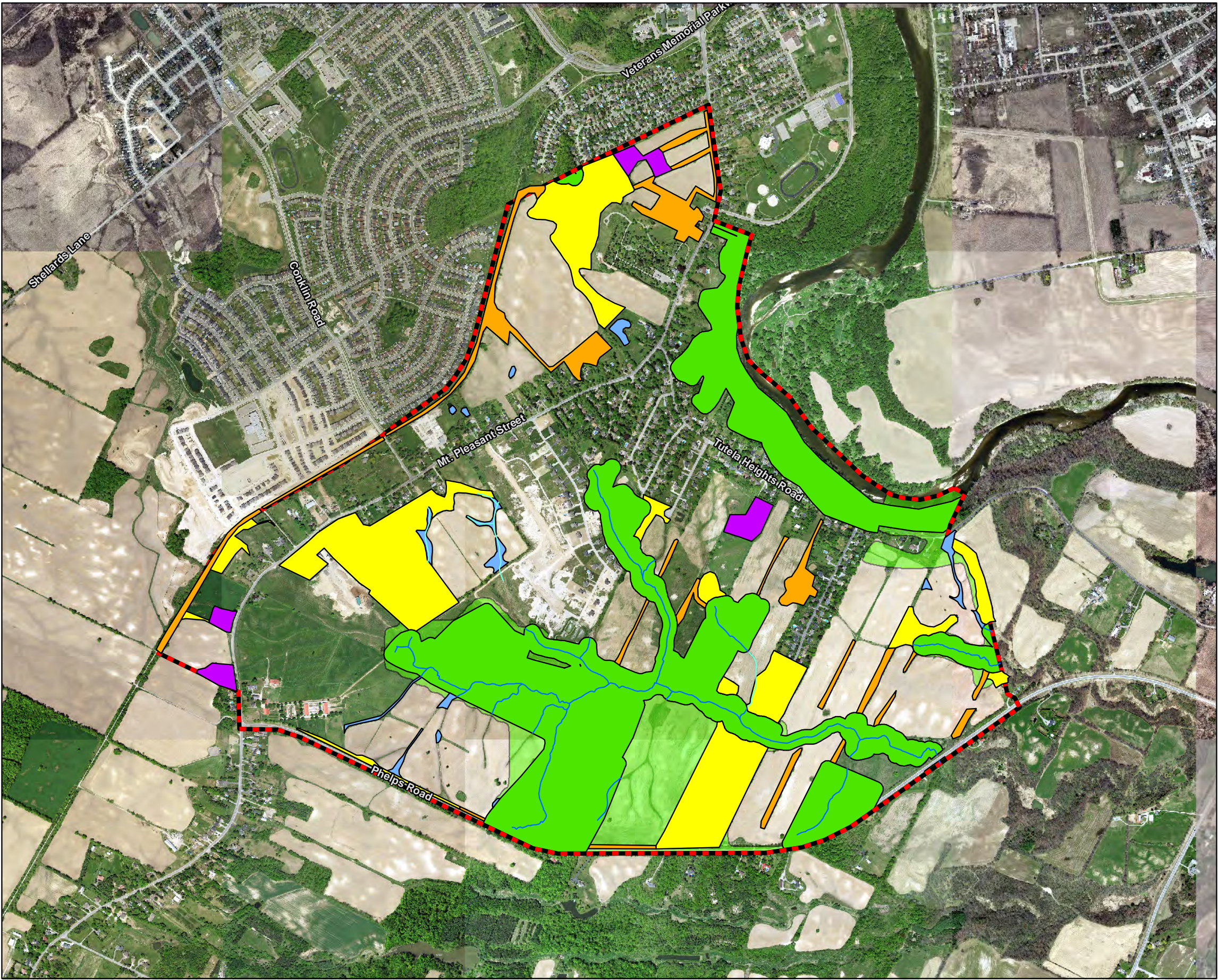
MANAGEMENT STRATEGY (CVC/TRCA (2014) definitions)	
No Management Required	
Mitigation	
✓	Replicate or enhance function through enhanced lot level conveyance measures
✓	Replicate functions by lot level conveyance measures connected to natural heritage systems and/or Low Impact Development (LID) stormwater options
✓	Replicate on-site flow and outlet flows to maintain feature function (e.g., vegetated swales, bioswales, etc.
Conservation	
✓	Maintain, relocate and/or enhance drainage feature and its riparian corridor
✓	Maintain or replace external flows
✓	Maintain or replace on-site flows using mitigation measures and/or wetland creation
✓	Natural channel design to maintain/ enhance overall productivity of the feature
✓	Feature must connect to downstream downstream
Protection	
✓	Protect / enhance the existing feature and its riparian corridor, groundwater discharge or wetlands
✓	Maintain hydroperiod
✓	Natural channel design to restore and enhance existing habitat features
✓	Design and locate the SWM system to avoid impacts to the feature

Tutela Heights Study Area



*Site access to these features occurred after November 2018 and thus the full three season Headwater Drainage Feature Assessment was incomplete. **Further assessment is required to confirm appropriate management strategies for these features.**

** Permission from the GRCA is required to develop in river or stream valleys, wetlands, shorelines or hazardous lands; alter a river, creek, stream or watercourse; or interfere with a wetland. Within these regulated areas, GRCA Policies for the Administration of the Development, Interference with Wetlands and Alterations to Shorelines and Watercourses Regulation apply (Ontario Regulation 150/06). Recommendations derived from the HDF assessment are in addition to, but do not supersede, GRCA regulatory requirements.



Legend

- Study Area
- Watercourse to be Protected
- Watercourse to be Conserved – channel form and location may vary
- Natural Heritage System
- NHS Area - Undifferentiated (Growth Plan)

Other Environmental Features

- Residential (ornamental plantings, cultural vegetation)
- Cultural (meadow, thicket, early-successional woodland)
- Wetland
- Woodland/Hedgerow

0 125 250 500 750 Meters

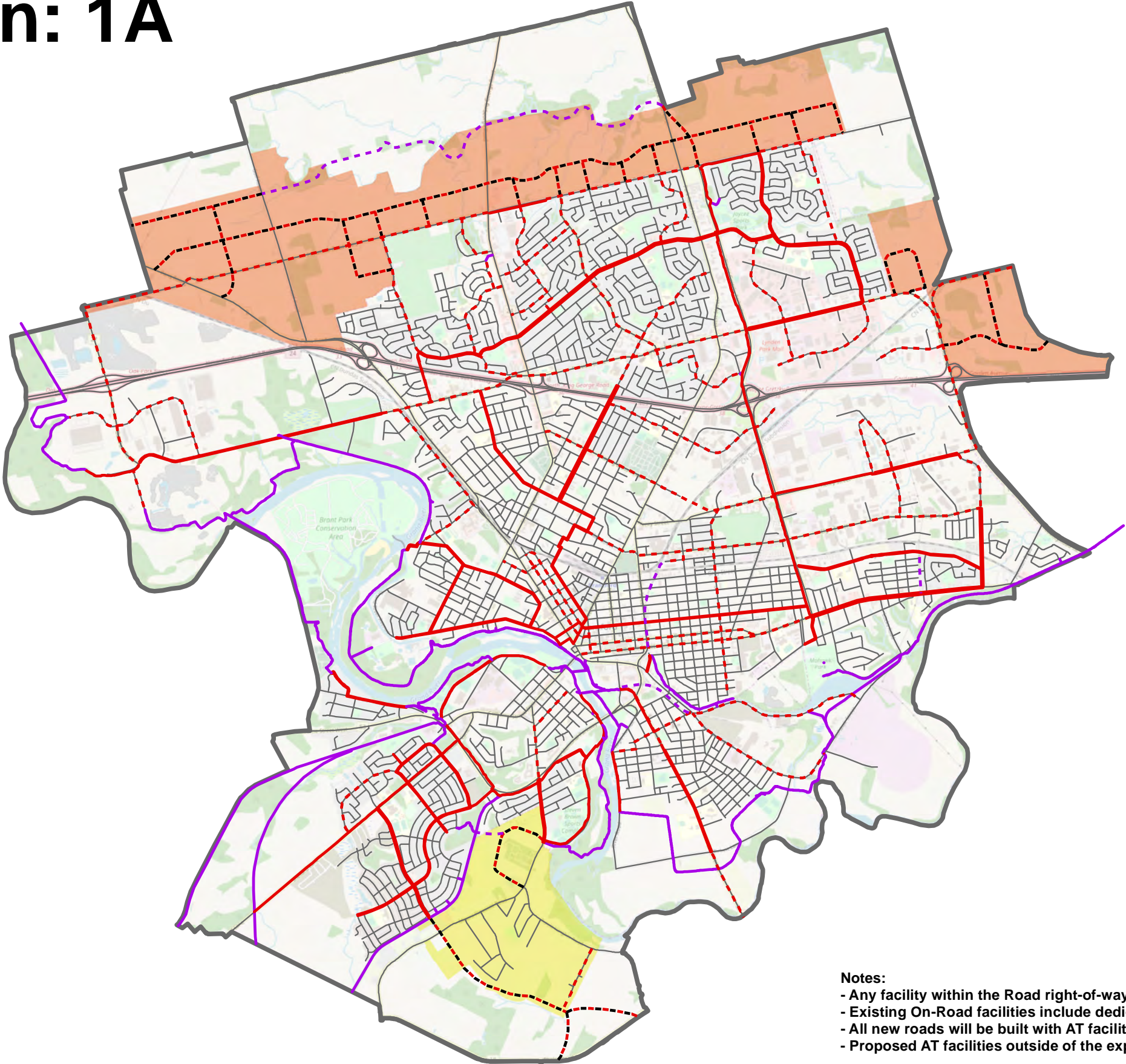
Data Source
- City of Brantford
- GRCA

PLAN B Natural Heritage
Landscape Ecology & Natural Heritage Planning
176 Fellowes Crescent
Waterdown, ON
L0R 2H3

**City of Brantford
Tutela Heights
Other Environmental Features**

Project #	2017-146	Figure # X
Date	January 2019	
Scale	1 : 15,000	
Prepared By: JJJ	Verified By: BDB	

Option: 1A

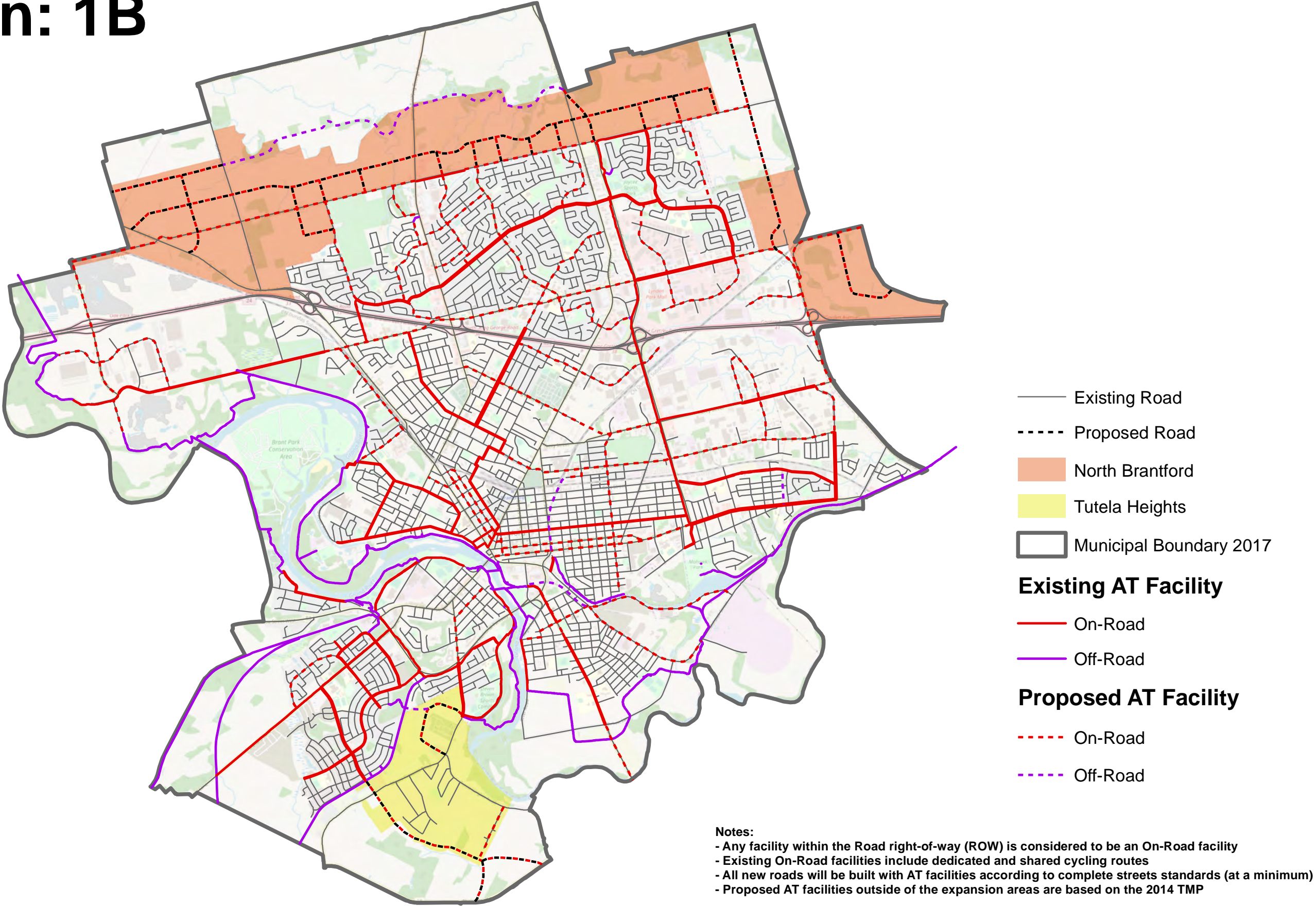


- Existing Road
- Proposed Road
- North Brantford
- Tutela Heights
- Municipal Boundary 2017
- Existing AT Facility**
 - On-Road
 - Off-Road
- Proposed AT Facility**
 - On-Road
 - Off-Road

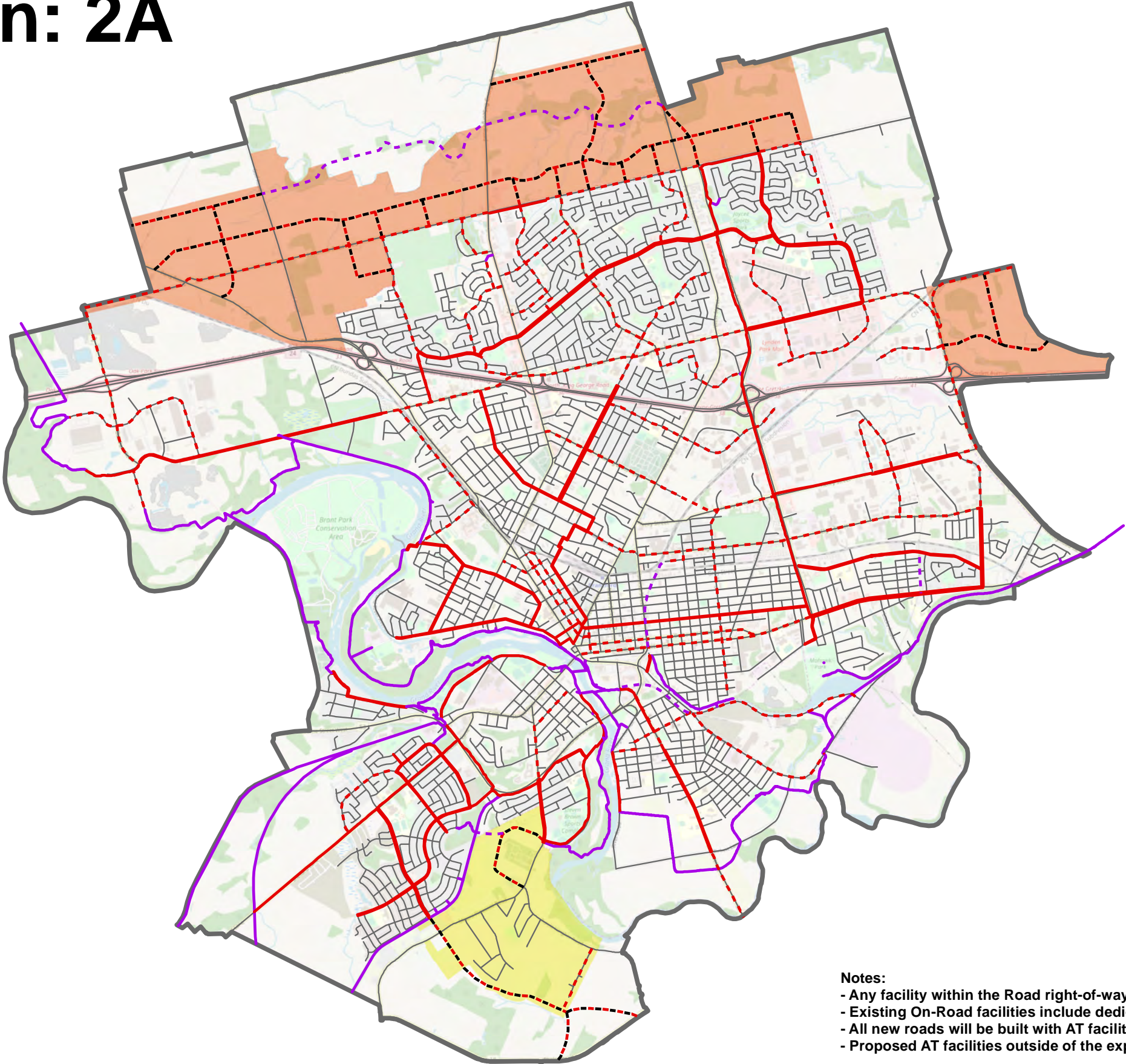
Notes:

- Any facility within the Road right-of-way (ROW) is considered to be an On-Road facility
- Existing On-Road facilities include dedicated and shared cycling routes
- All new roads will be built with AT facilities according to complete streets standards (at a minimum)
- Proposed AT facilities outside of the expansion areas are based on the 2014 TMP

Option: 1B



Option: 2A



Notes:

- Any facility within the Road right-of-way (ROW) is considered to be an On-Road facility
- Existing On-Road facilities include dedicated and shared cycling routes
- All new roads will be built with AT facilities according to complete streets standards (at a minimum)
- Proposed AT facilities outside of the expansion areas are based on the 2014 TMP

Option: 2B

