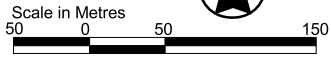


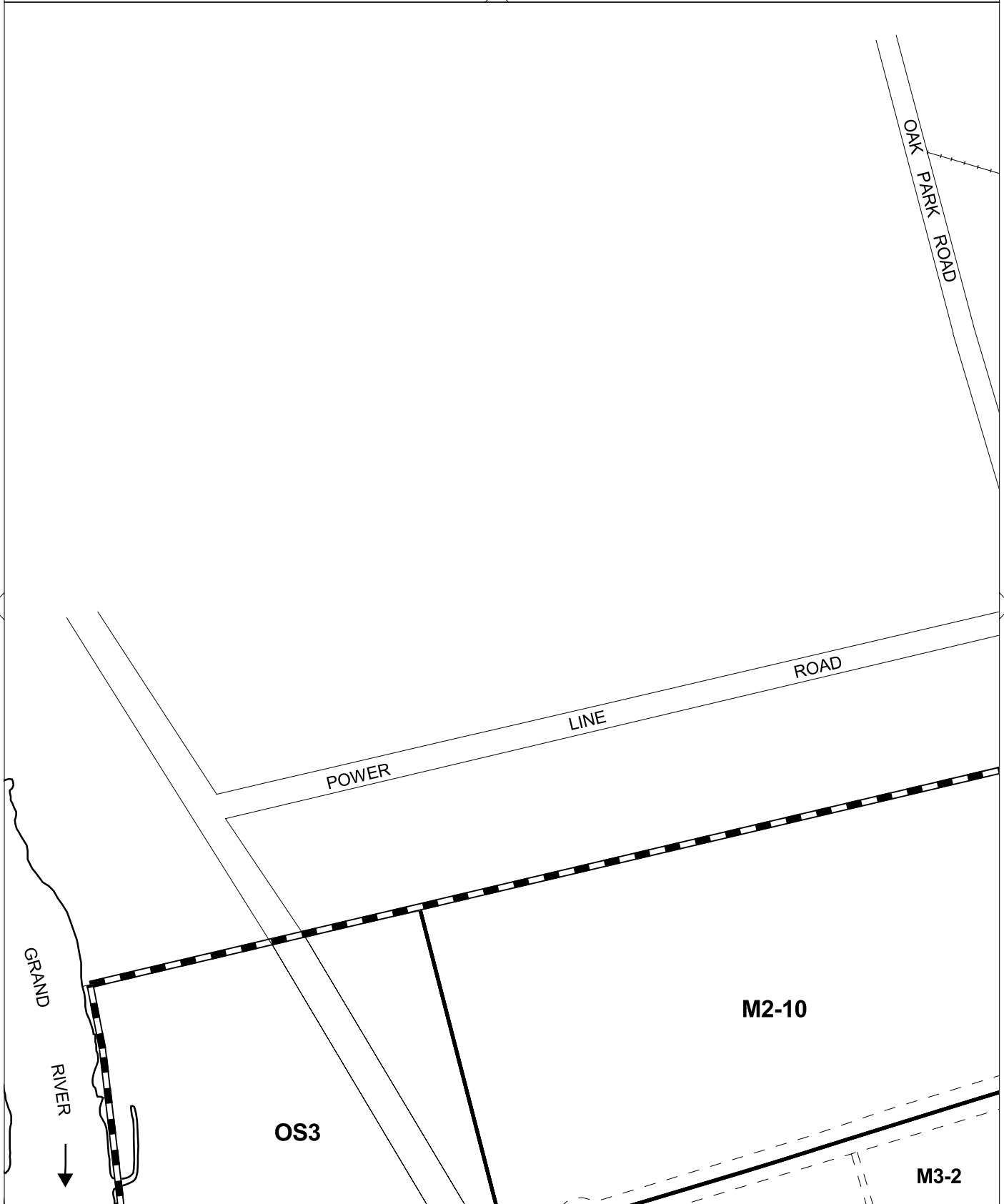
THIS SCHEDULE HAS BEEN CONSOLIDATED BY BYLAWS:
172-91 145-2008
118-2000
167-2000
188-2004
68-2007



nil

nil

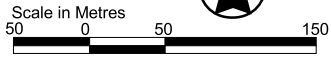
C-2



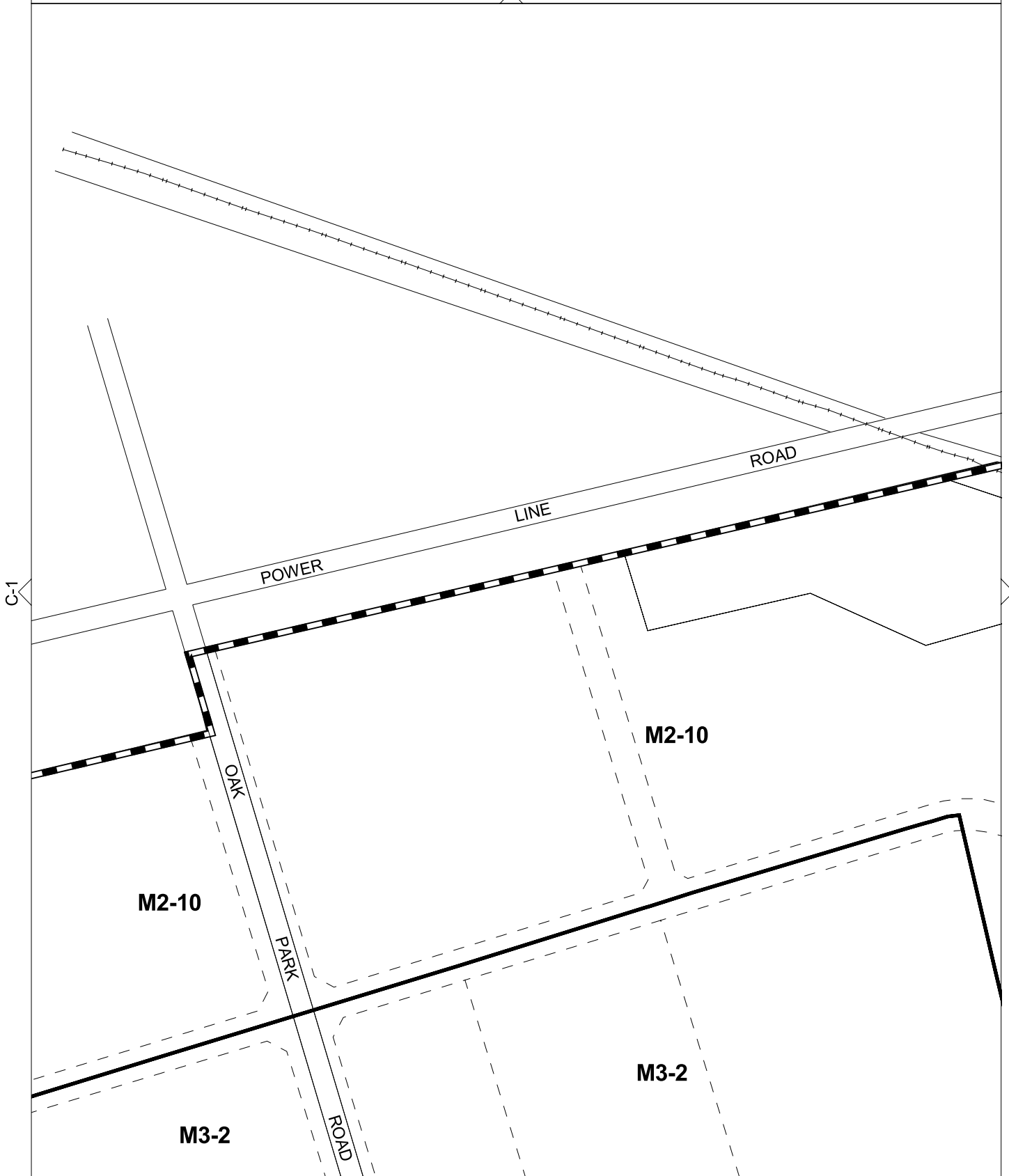
D-1

THIS SCHEDULE HAS BEEN CONSOLIDATED BY BYLAWS:

- 172-91 145-2008
- 118-2000
- 171-2003
- 187-2004
- 188-2004



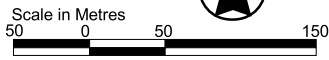
nil



D-2

THIS SCHEDULE HAS BEEN CONSOLIDATED BY BYLAWS:

- 118-2000
- 171-2003
- 187-2004
- 68-2007
- 145-2008



nil

C-2

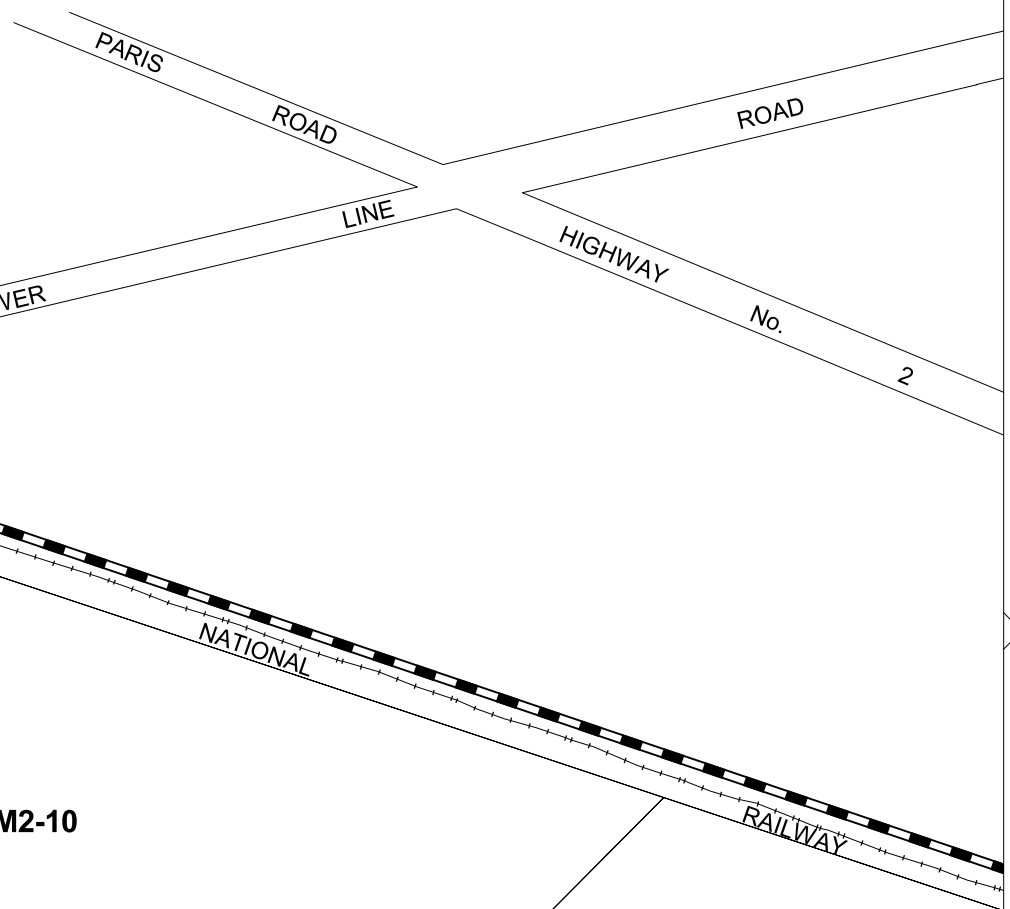
C-4

D-3

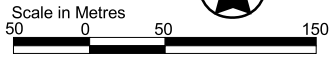
M2-10

M3-2

M2-10



THIS SCHEDULE HAS BEEN CONSOLIDATED BY BYLAWS:
118-2000
187-2004
68-2007

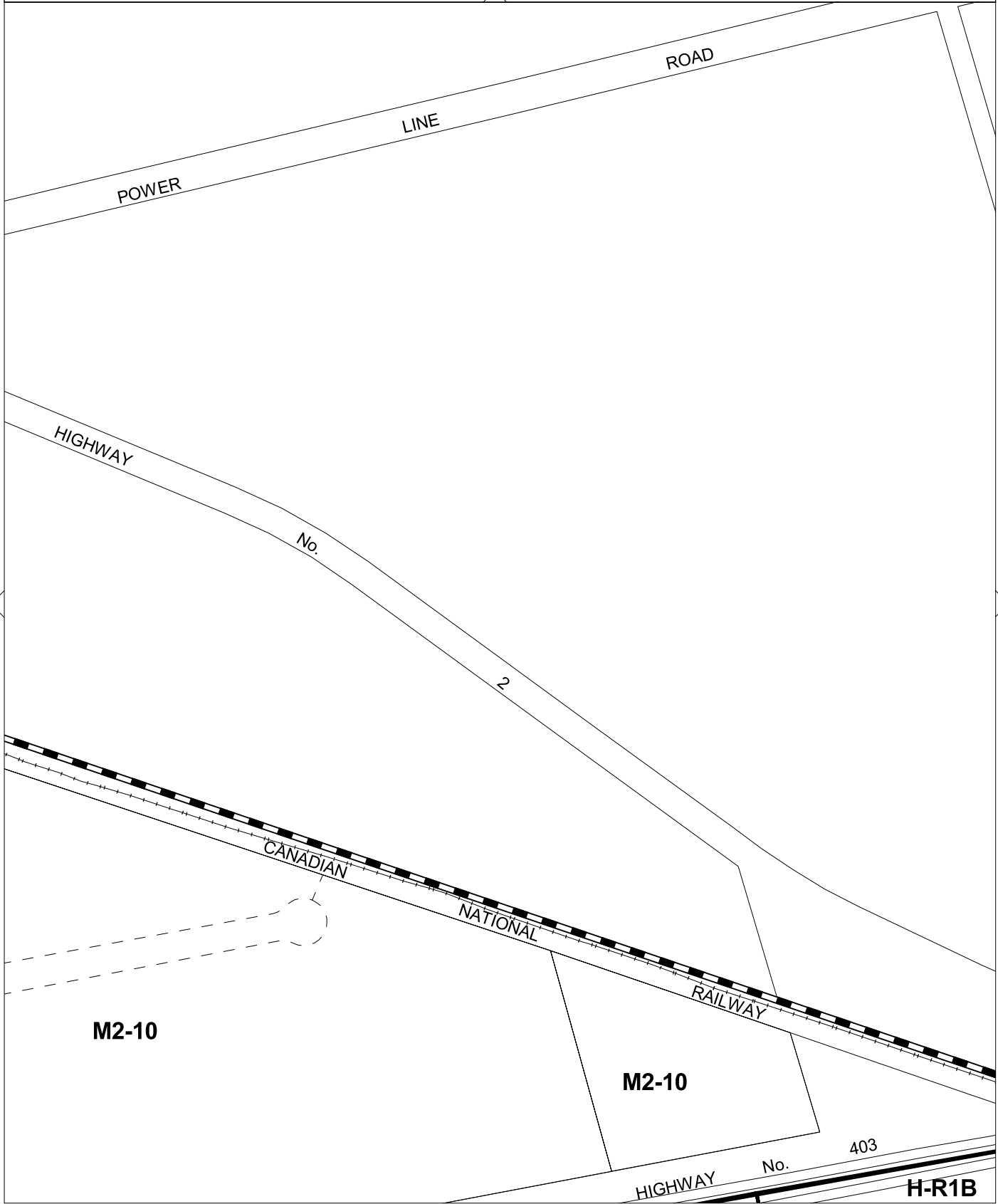


nil

C-3

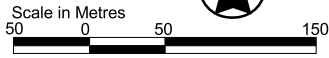
C-5

D-4



THIS SCHEDULE HAS BEEN CONSOLIDATED BY BYLAWS:

- 77-95
- 52-97
- 99-98
- 118-2000
- 187-2004
- 68-2007



nil

C-4

C-6

GOLF

ROAD

H-R1B

ALLENSGATE

DR.

CRESCENT

R1B

ROBINIA

LANE

MOYLE DRIVE

MYRTLEVILLE DR.

R1A

M2-10

HIGHWAY No. 403

H-R1B

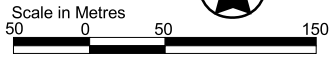
R1A

RAILWAY

D-5

THIS SCHEDULE HAS BEEN CONSOLIDATED BY BYLAWS:

- 141-94
- 77-95
- 90-96
- 6-98
- 142-98



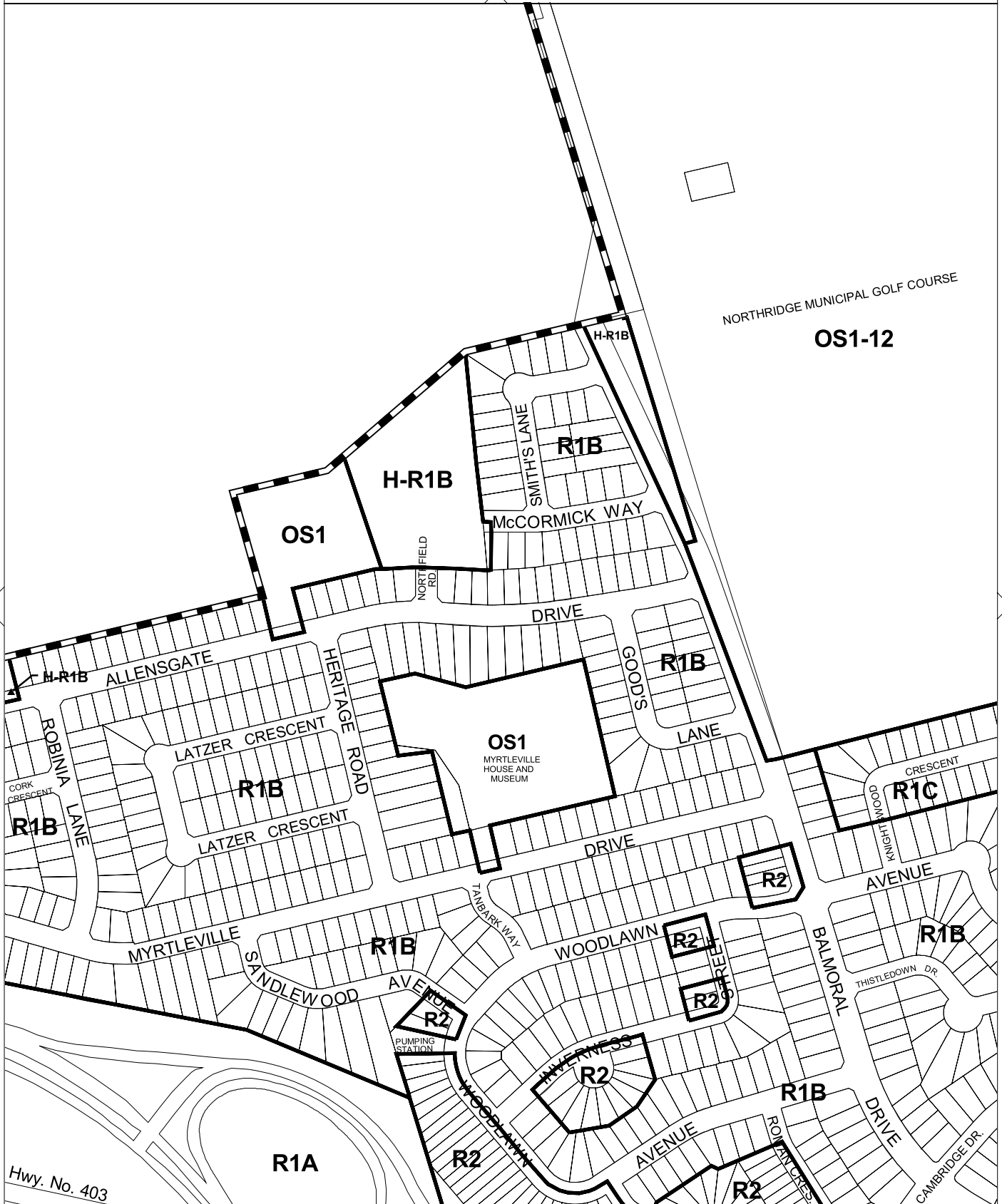
B-6

NORTH RIDGE MUNICIPAL GOLF COURSE

OS1-12

C-5

C-7

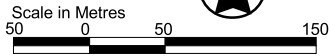


Hwy. No. 403

D-6

THIS SCHEDULE HAS BEEN CONSOLIDATED BY BYLAWS:

- 168-91 90-96
- 169-91 103-97
- 61-92 37-2002
- 115-92
- 191-94



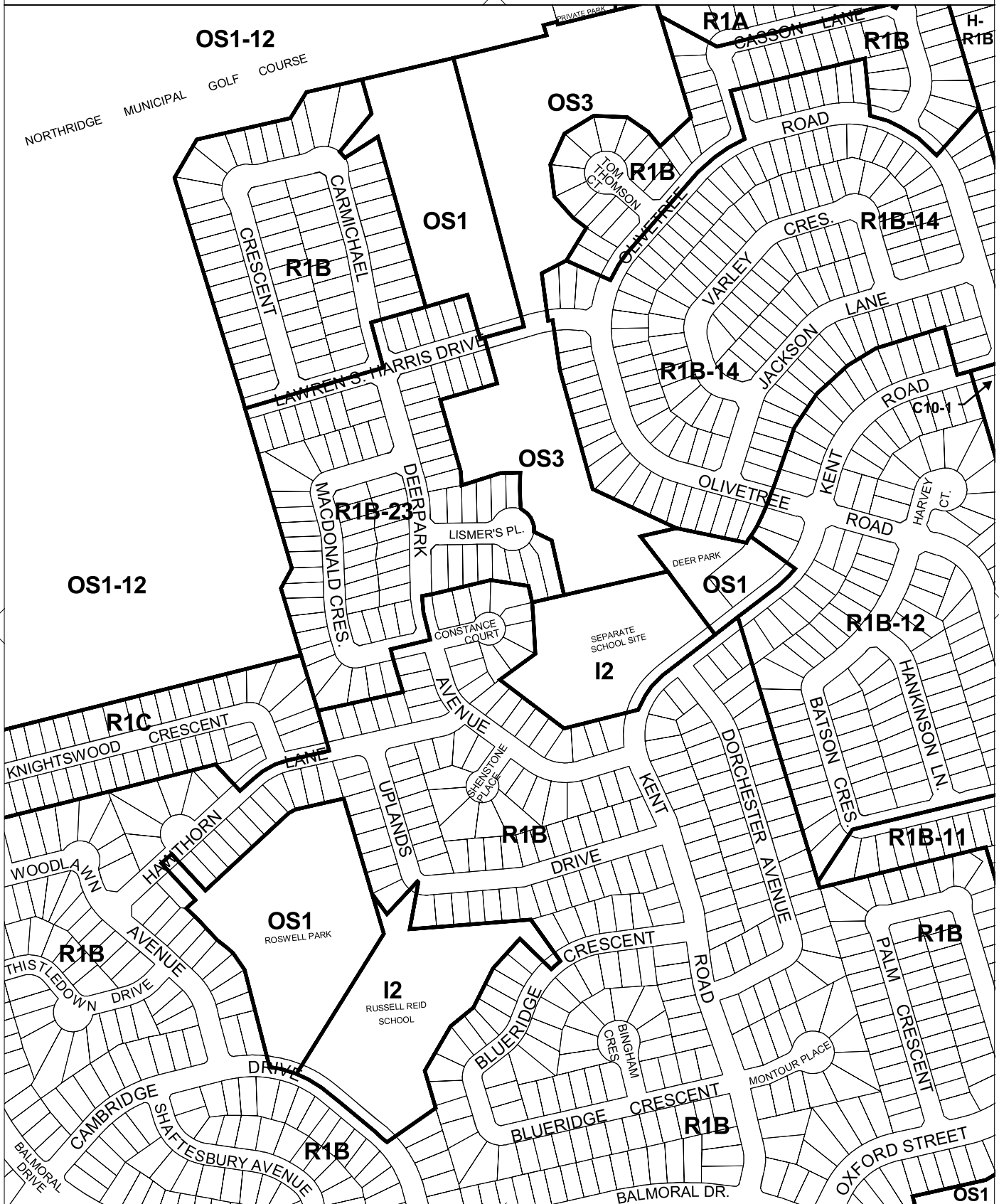
B-7

A-6

C-6

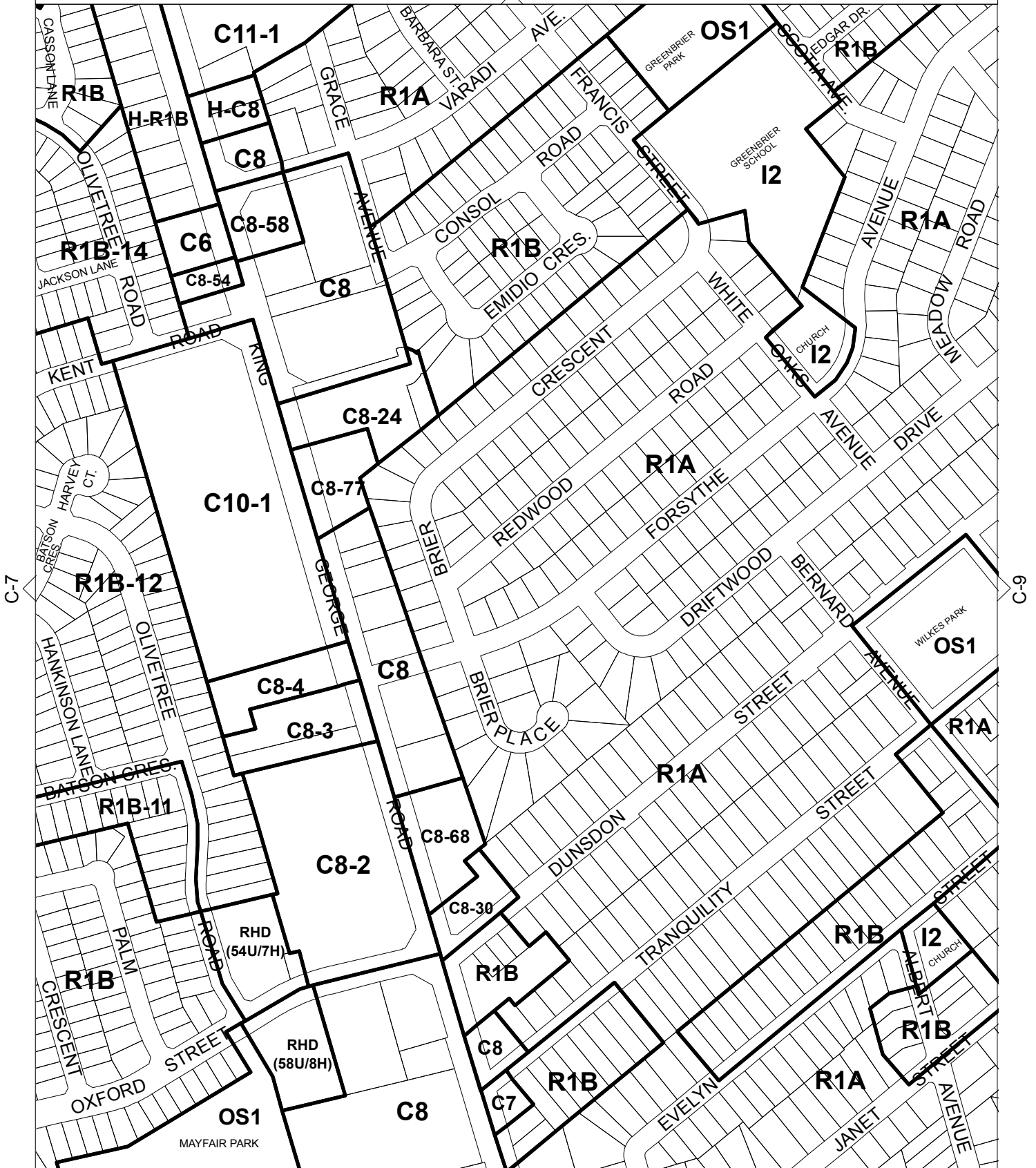
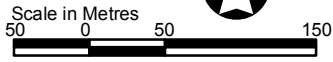
C-8

D-7

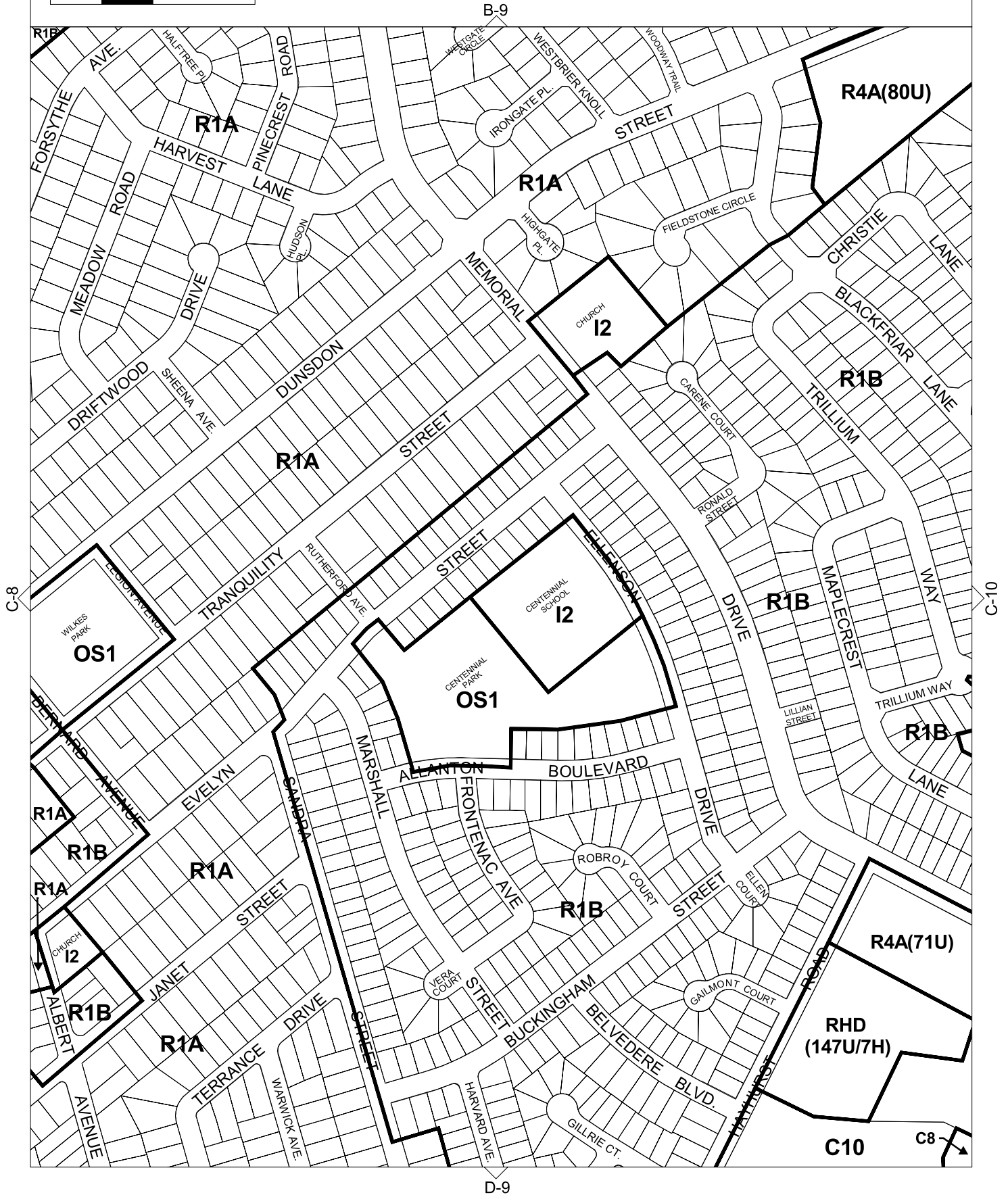
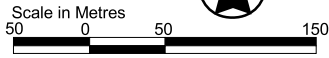


THIS SCHEDULE HAS BEEN CONSOLIDATED BY BYLAWS:

| | | | | | |
|--------|--------|--------|--------|----------|---------|
| 16-91 | 137-93 | 191-96 | 23-98 | 22-2001 | 43-2014 |
| 25-91 | 191-94 | 25-97 | 29-99 | 215-2004 | |
| 168-91 | 35-95 | 103-97 | 90-99 | 72-2008 | |
| 169-91 | 107-95 | 149-97 | 135-99 | 95-2011 | |
| 61-92 | 149-96 | 6-98 | B-8 | 92-2013 | |

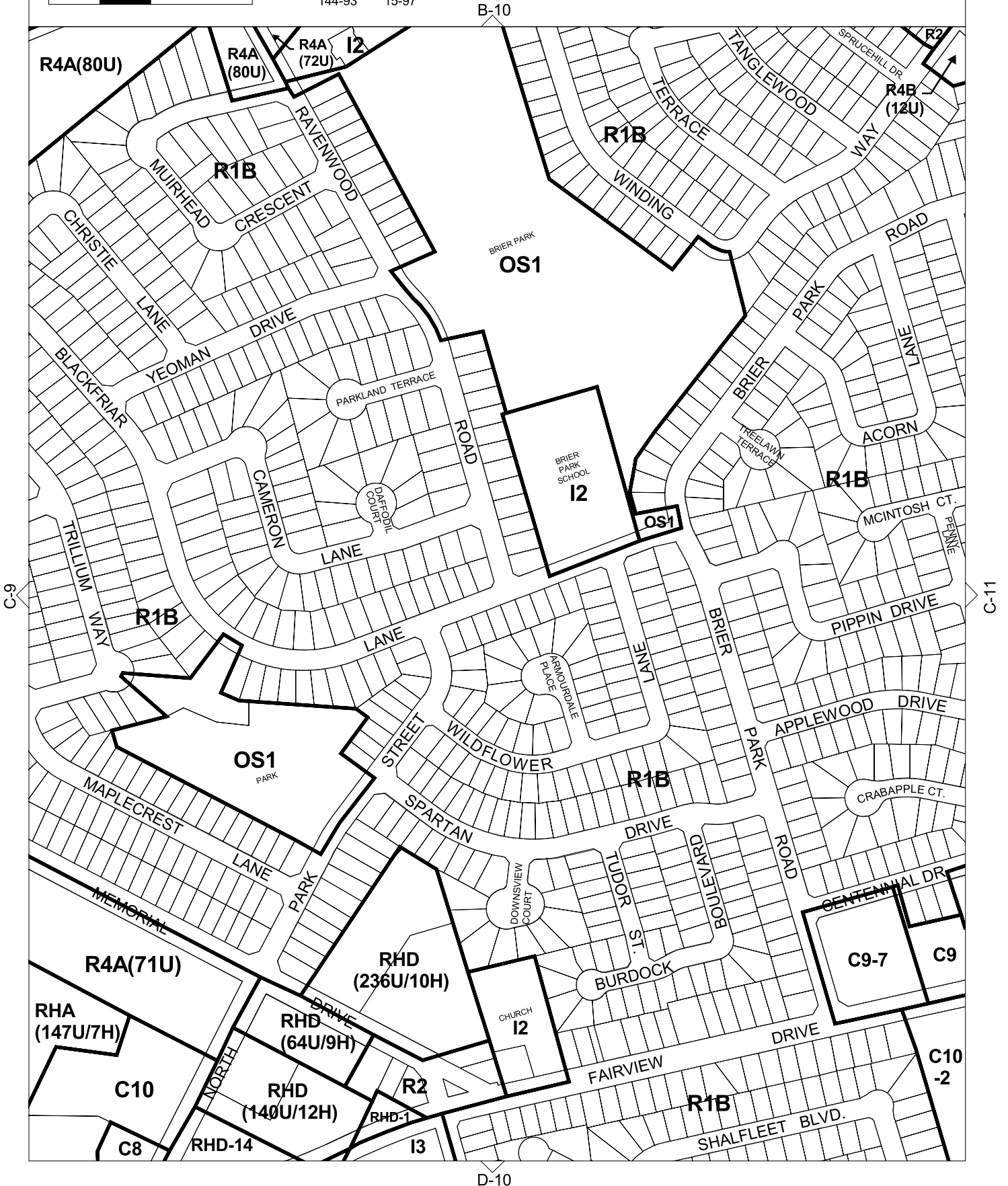
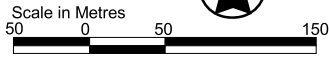


THIS SCHEDULE HAS BEEN CONSOLIDATED BY BYLAWS:
137-95
72-98
135-99



THIS SCHEDULE HAS BEEN CONSOLIDATED BY BYLAWS:

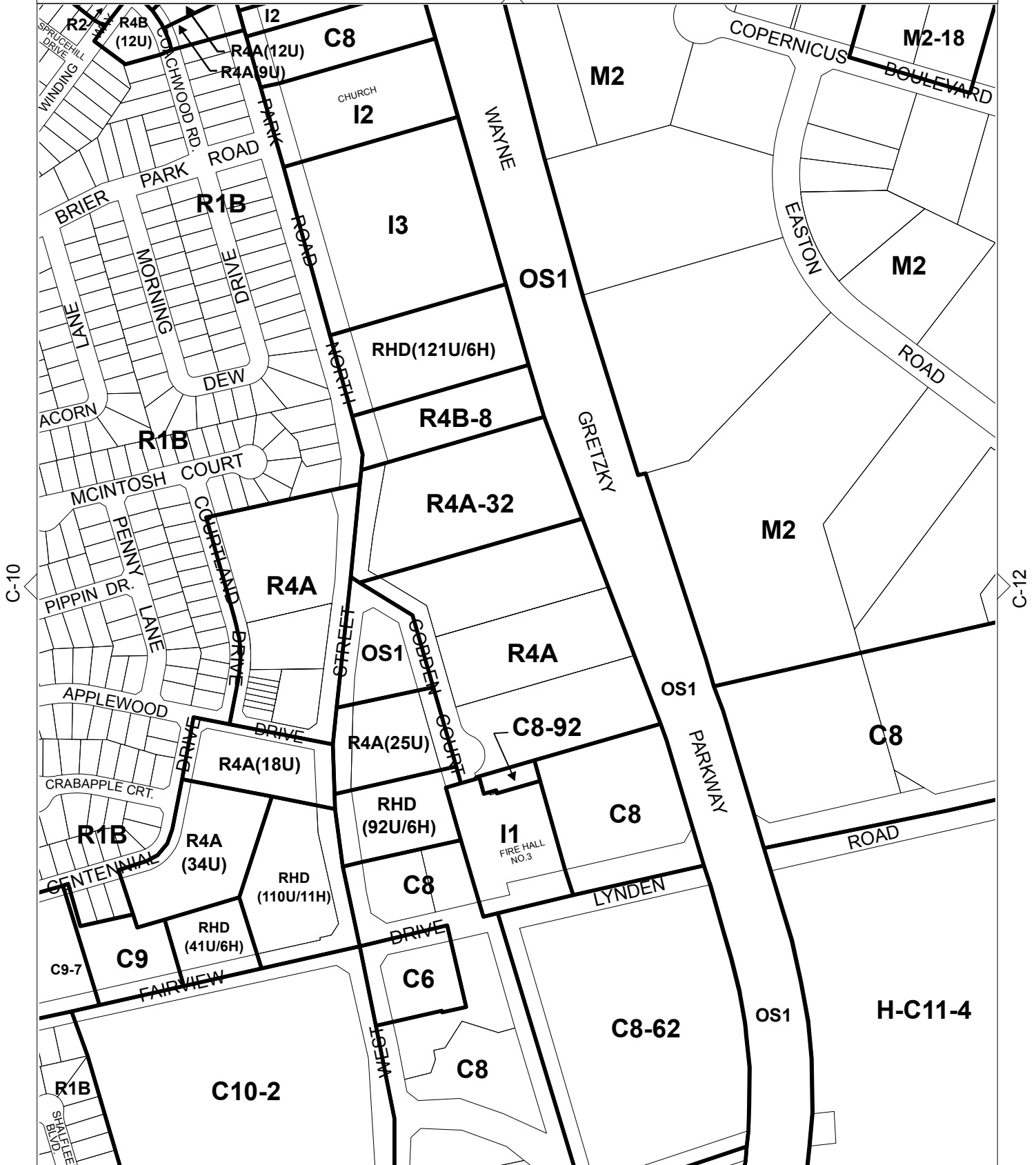
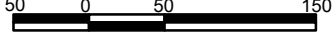
| | | |
|--------|--------|--------|
| 16-91 | 18-94 | 142-97 |
| 25-91 | 46-95 | 149-97 |
| 115-92 | 137-95 | 89-98 |
| 135-93 | 175-96 | |
| 144-93 | 15-97 | |



THIS SCHEDULE HAS BEEN CONSOLIDATED BY BYLAWS:

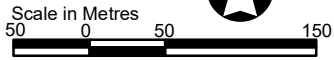
| | | | | | |
|--------|--------|--------|---------|----------|----------|
| 16-91 | 46-93 | 46-95 | 149-97 | 164-2000 | 199-2003 |
| 25-91 | 135-93 | 35-95 | 107-99 | 78-2001 | 9-2010 |
| 88-91 | 86-94 | 175-96 | 108-99 | 79-2001 | 92-2013 |
| 84-92 | 179-94 | 15-97 | 54-2000 | 80-2001 | 93-2016 |
| 115-92 | 192-94 | 142-97 | B-11 | 124-2002 | |

Scale in Metres



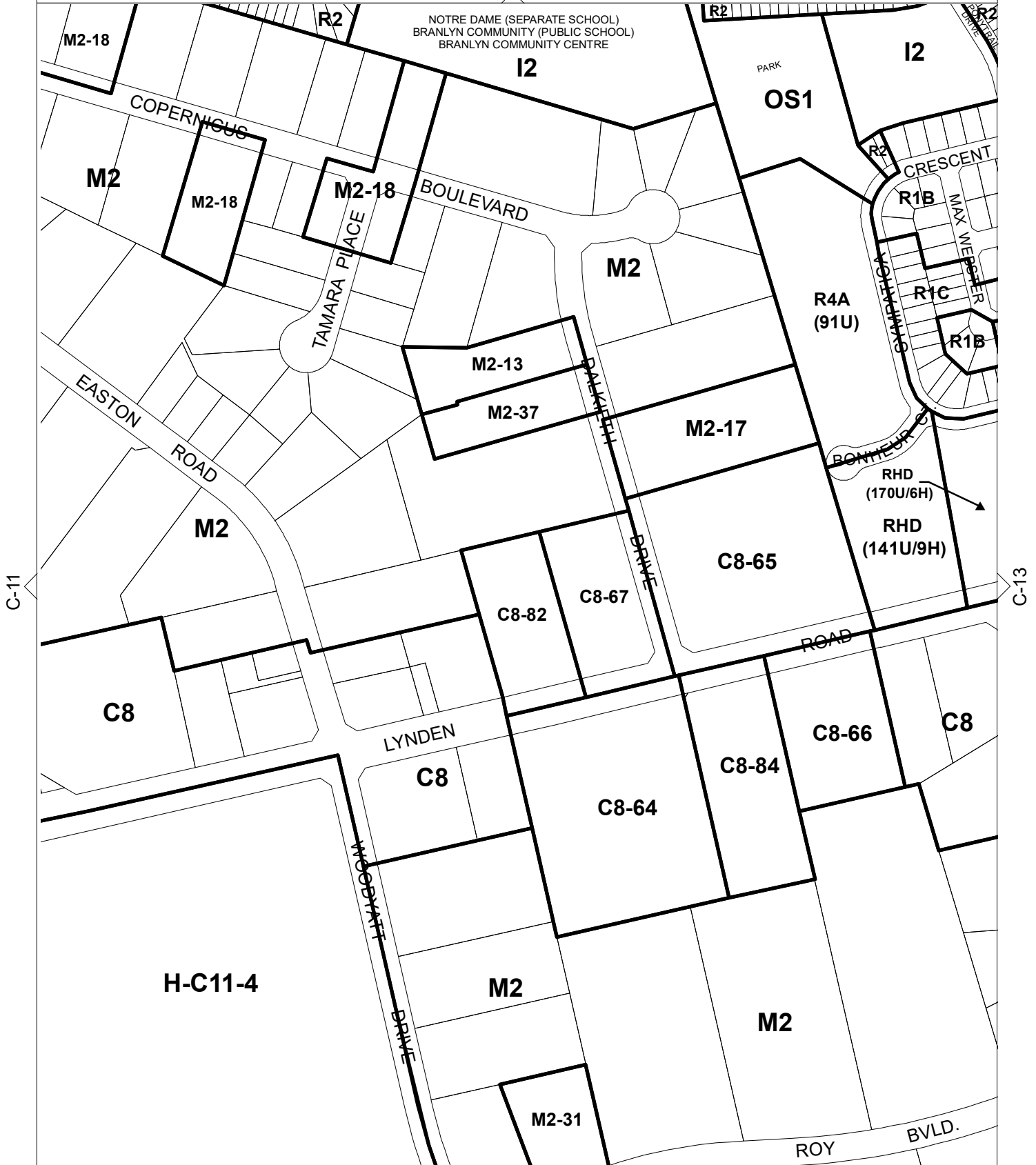
THIS SCHEDULE HAS BEEN CONSOLIDATED BY BYLAWS:

| | | | | |
|--------|--------|----------|----------|----------|
| 158-91 | 111-93 | 155-99 | 117-2003 | 9-2010 |
| 115-92 | 140-94 | 164-2000 | 154-2003 | 93-2016 |
| 45-93 | 69-96 | 79-2001 | 160-2007 | 144-2019 |
| 64-93 | 107-96 | 150-2001 | 25-2008 | |
| 110-93 | 154-99 | | | |



B-12

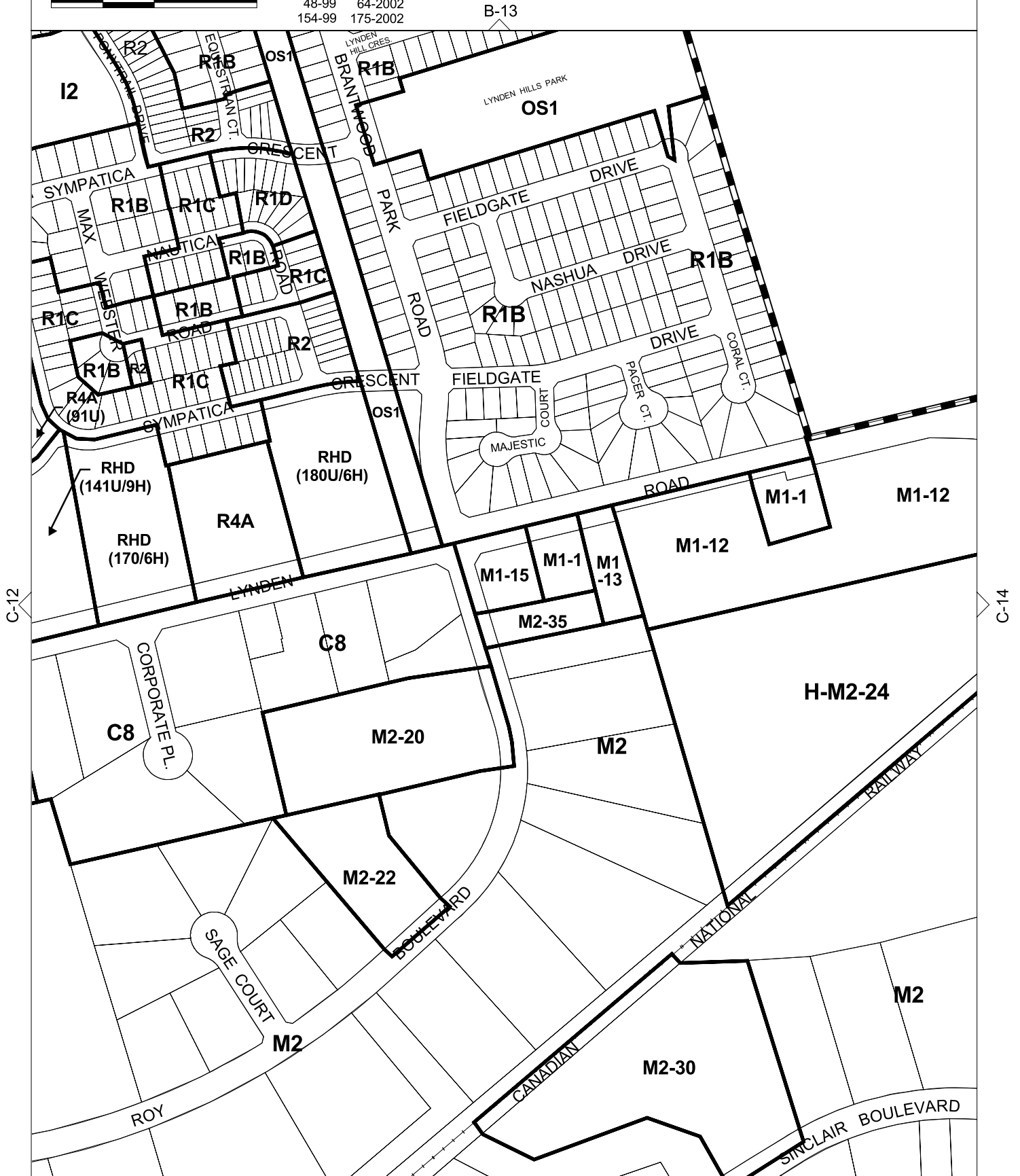
NOTRE DAME (SEPARATE SCHOOL)
BRANLYN COMMUNITY (PUBLIC SCHOOL)
BRANLYN COMMUNITY CENTRE



D-12

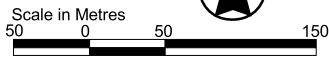
THIS SCHEDULE HAS BEEN CONSOLIDATED BY BYLAWS:

- 115-92 67-2000 26-2008
- 105-94 164-2000
- 12-96 112-2001
- 92-97 185-2001
- 48-99 64-2002
- 154-99 175-2002



THIS SCHEDULE HAS BEEN CONSOLIDATED BY BYLAWS:

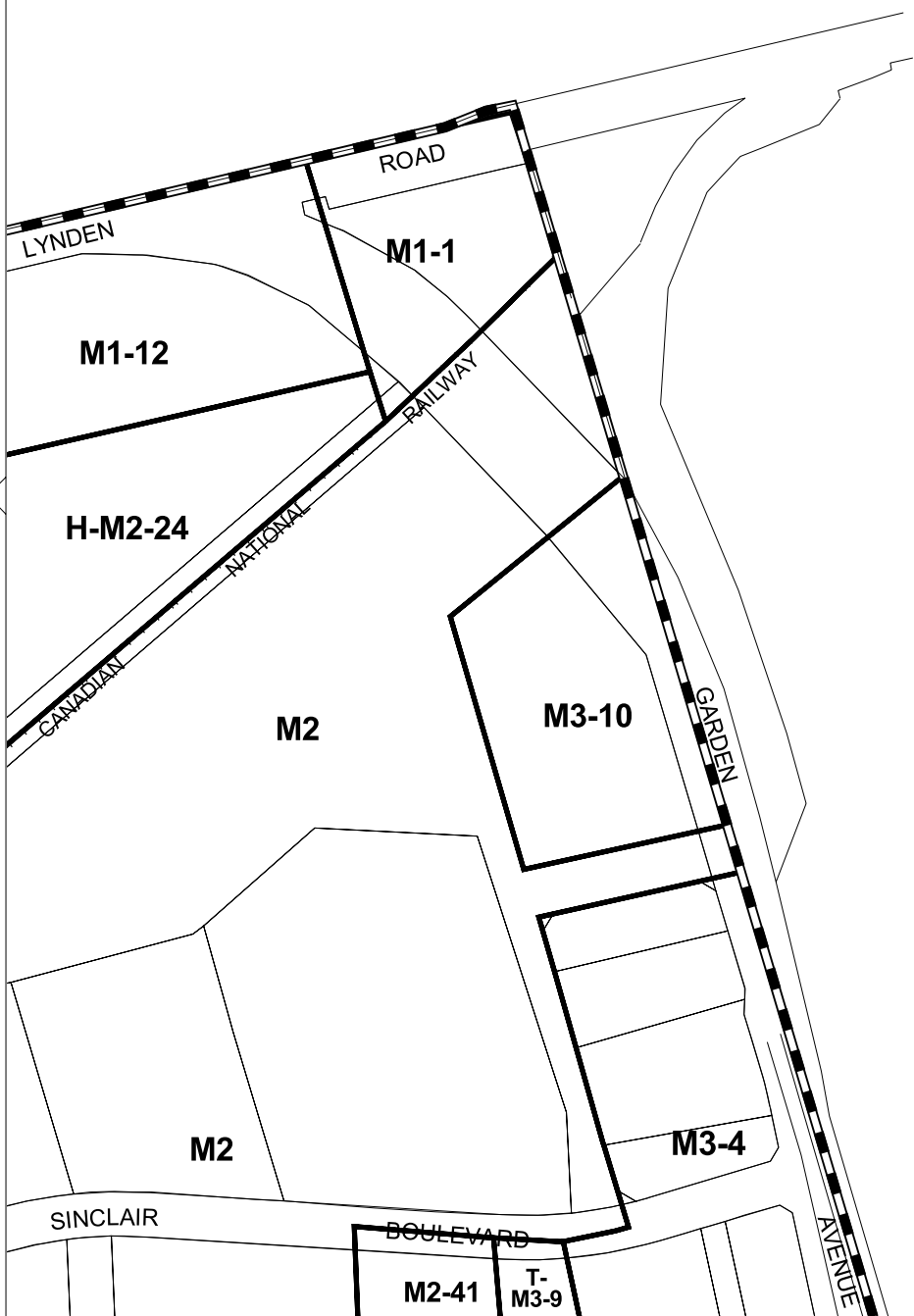
- 132-92 56-2008
- 48-99 89-2008
- 51-99 53-2009
- 67-2000
- 53-2006
- 27-2008



nil

C-13

nil



D-14