

Welcome

Why Are We Here?

- The City is updating the 2014 Water, Wastewater and Stormwater Master Plan (MSP) and the 2014 Transportation Master Plan (TMP)
- These updates will develop long term servicing and transportation strategies to ensure the maintenance of services for existing residents and business as well as support future growth of the community
- Public Consultation and feedback are important components of these projects

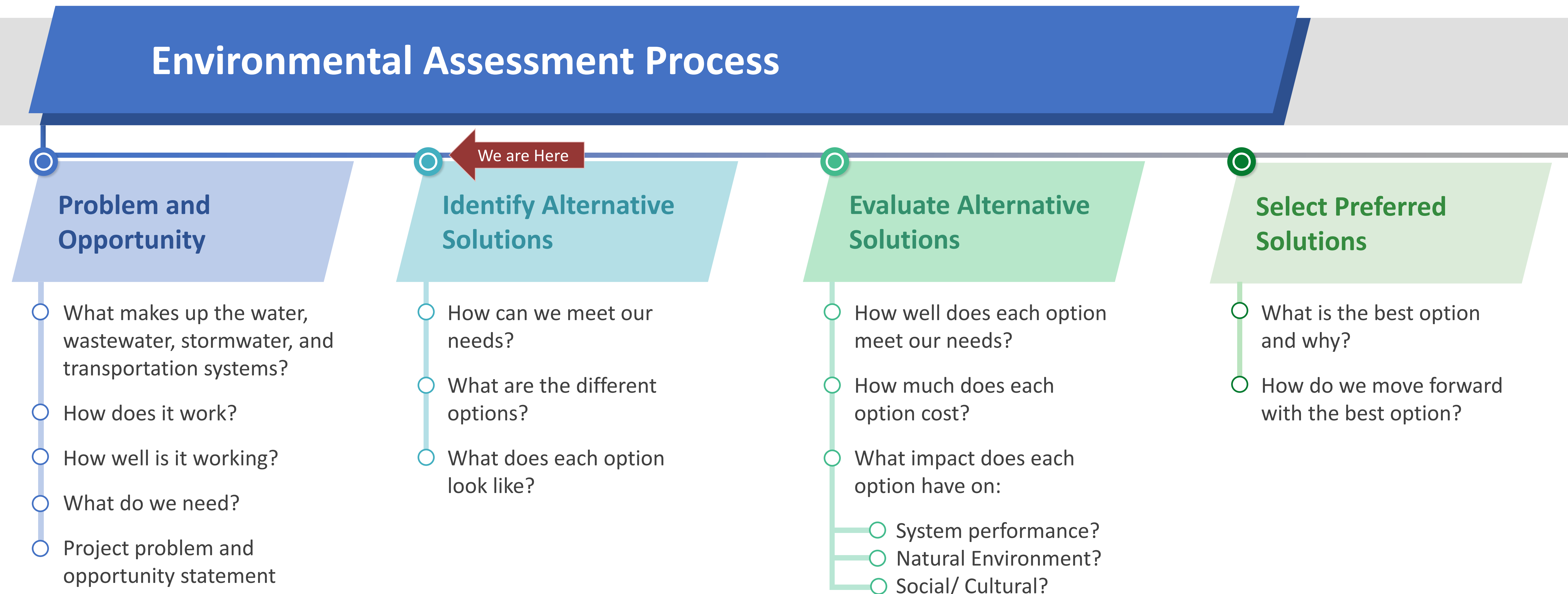
We Need Your Help!

You will have the opportunity to review and discuss the strategic approach to both the MSP and TMP updates including:

- Recap on growth areas within the expanded City Boundary
- The opportunities and constraints with meeting the City's growth to 2041 using existing water, wastewater, stormwater and transportation infrastructure systems
- Infrastructure strategy improvement opportunities to meet future constraints and challenges for these four infrastructure systems

Municipal Class EA Process

The Water, Wastewater, and Stormwater Master Servicing Plan Update and Transportation Master Plan Update involve the completion of Phases 1 and 2 of the MEA Municipal Class EA process

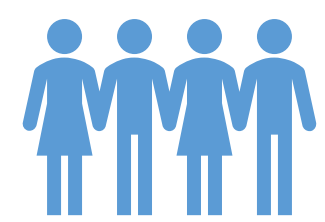


The study follows the Master Plan process as outlined in Section A.2.7 of the Municipal Engineers Association (MEA) Municipal Class Environmental Assessment (Oct 2000, as amended in 2007, 2011, and 2015).

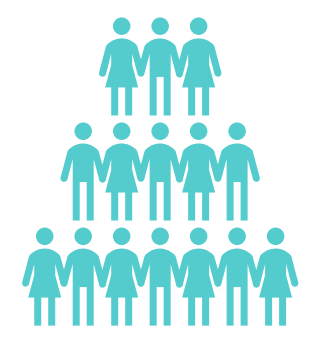
Vision

Supporting a Strong and Growing Brantford

To establish a preferred servicing plan for the City's water, wastewater, stormwater, and transportation systems that:



Meets current needs



Supports growth and expansion of the City's urban boundary (i.e. Settlement Area)



Maintains or improves service levels



Considers priority areas of climate change, infrastructure optimization and renewal, and system resiliency

City of Brantford Population and Employment Growth

Population and Employment Forecast

Year	Population	Employment
2016	101,700	44,890
2021	111,300	53,600
2026	125,200	60,300
2031	139,000	67,000
2036	152,000	72,000
2041	163,000	79,000

Source: Envisioning Brantford - MCR Part 1 Report, SGL Planning & Design et. al., Table 3.2; 2031-2041 Growth Plan Sch. 3

Population and Employment Growth, 2016-2041

	Population			Employment		
	2016	2041	Growth	2016	2041	Growth
Built-Up Community Area	94,720	110,305	15,585	18,530	28,055	9,525
Existing Designated Greenfield Area	6,485	29,845	23,360	355	1,495	1,140
New Designated Greenfield Area	★	22,620	22,620	★	4,955	4,955
Existing Employment Area				25,575	36,025	10,450
New Employment Area				★	8,400	8,400
Rural Area	495	230	-265	430	70	-360
Total	101,700	163,000	61,300	44,890	79,000	34,110

Note: ★ Accounted for in the Rural Area in 2016. Most of the 2016 Rural Area population and employment will be absorbed into the New Designated Greenfield Area or New Employment Area.
Source: Envisioning Brantford - MCR Part 1 Report, SGL Planning & Design et. al., Chapters 6 and 10

Proposed Housing Unit Growth, 2016-2041

	Designated Greenfield Area (Existing and New)	Built-Up Area (Intensification Target)★
2016-2021	1,125	750 (40%)
2021-2031	7,855	6,400 (45%)
2031-2041	5,295	5,230 (50%)
Total Units	14,275	12,380

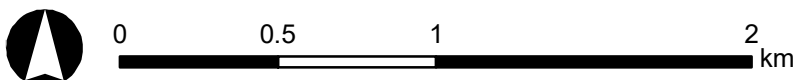
Note: ★ The Intensification Target is the percentage of all residential development (units) occurring annually in Brantford that will be located within the Built-up Area.

Proposed Distribution of Units in the Built-Up Area

Downtown Urban Growth Centre	4,920
Intensification Nodes and Corridors	4,720
Other Neighbourhoods	2,740
Total Units	12,380

Source: Envisioning Brantford - MCR Part 1 Report, SGL Planning & Design et. al., Tables 8.15 and 10.6

- LEGEND**
- Future Settlement Area Boundary
 - Built-up Areas
 - Built-up Community Areas
 - Downtown Urban Growth Centre
 - Intensification Nodes and Corridors
 - Existing Designated Greenfield Areas
 - New Designated Greenfield Areas
 - Existing Employment Areas
 - New Employment Areas
 - Rural/Agricultural Areas
 - Core Natural Areas



Thank you for your participation!

We want to hear from you!

Please let us know your thoughts by filling out a comment form. If you have any questions or input, please speak with one of the project team members here, and/or you may contact the City of Brantford Project Manager:

JOIN THE
CONVERSATION



facebook.com/CityofBrantford



@CityofBrantford

Sharon Anderson, P.Eng

City Project Manager,
Asset Management Specialist
100 Wellington Square
Brantford, Ontario N3T 2M2
Tel: 519-759-4150 ext. 5412
Email: andersonsh@brantford.ca

Master Servicing Plan Update

Julien Bell, P.Eng.

Consultant Project Manager
GM BluePlan Engineering Limited
330 Trillium Drive, Unit D
Kitchener, Ontario N2E 3J2
Tel: 519-748-1440 ext. 4264
Email: julien.bell@gmblueplan.ca

Chris Fong, P.Eng

Senior Transportation Project
Manager
100 Wellington Square
Brantford, Ontario N3T 2M2
Tel: 519-759-4150 ext. 5630
Email: cfong@brantford.ca

Transportation Master Plan Update

Paul Bumstead, B.E.S.

Consultant Project Manager
Dillon Consulting Limited,
235 Yorkland Boulevard, Suite 800
Toronto, Ontario M2J 4Y8
Tel: 416-229-4646
Email: pbumstead@dillon.ca

Please note that information related to this study will be collected in accordance with the *Municipal Freedom of Information and Protection of Privacy Act*.
All comments received will become part of the public record and may be included in the study documentation prepared for public review.