

# DEVON DOWN PARK

## COMMUNITY CONSULTATION SUMMARY



Based on community input via community meetings, in-classroom presentations, student activity sheets, online surveys and phone calls/e-mails received, the following items were included in our playground request for proposal (RFP).

### JUNIOR PLAY

- 1 slide
- 2 climbing components (each of a different climbing experience)
- Additional components/activities (two of which must be ground-based)
  - 1 imaginative (driving wheel)
  - 1 sensory (musical element)
  - 1 physical/tactile (maze)
- Stairs with a transfer station

### SENIOR PLAY

- Main Slide: Wave slide
- Key Feature: Track ride or zip line
- 7 additional play elements focusing on climbing, spinning, hanging, swinging, balancing and jumping (placed in order of preference by the community): Net climber, Rung Climber, Overhead spinner, seat spinner, fireman pole, balance pods and bounce button.

### SWINGS & OTHER

- 3 bay swing set including:  
3 belts, 2 tots and 1 accessible swing seat

Sand play area with natural items border and features.

Favourite colour scheme:  
Lime, Purple & Grey

Playground equipment suppliers respond to the RFP with a design which is then evaluated by staff based on special criteria. From here, a winning design is chosen and the project is awarded to the successful supplier.

Here is a sneak peak at the awesome playground equipment coming soon to Devon Down Park!

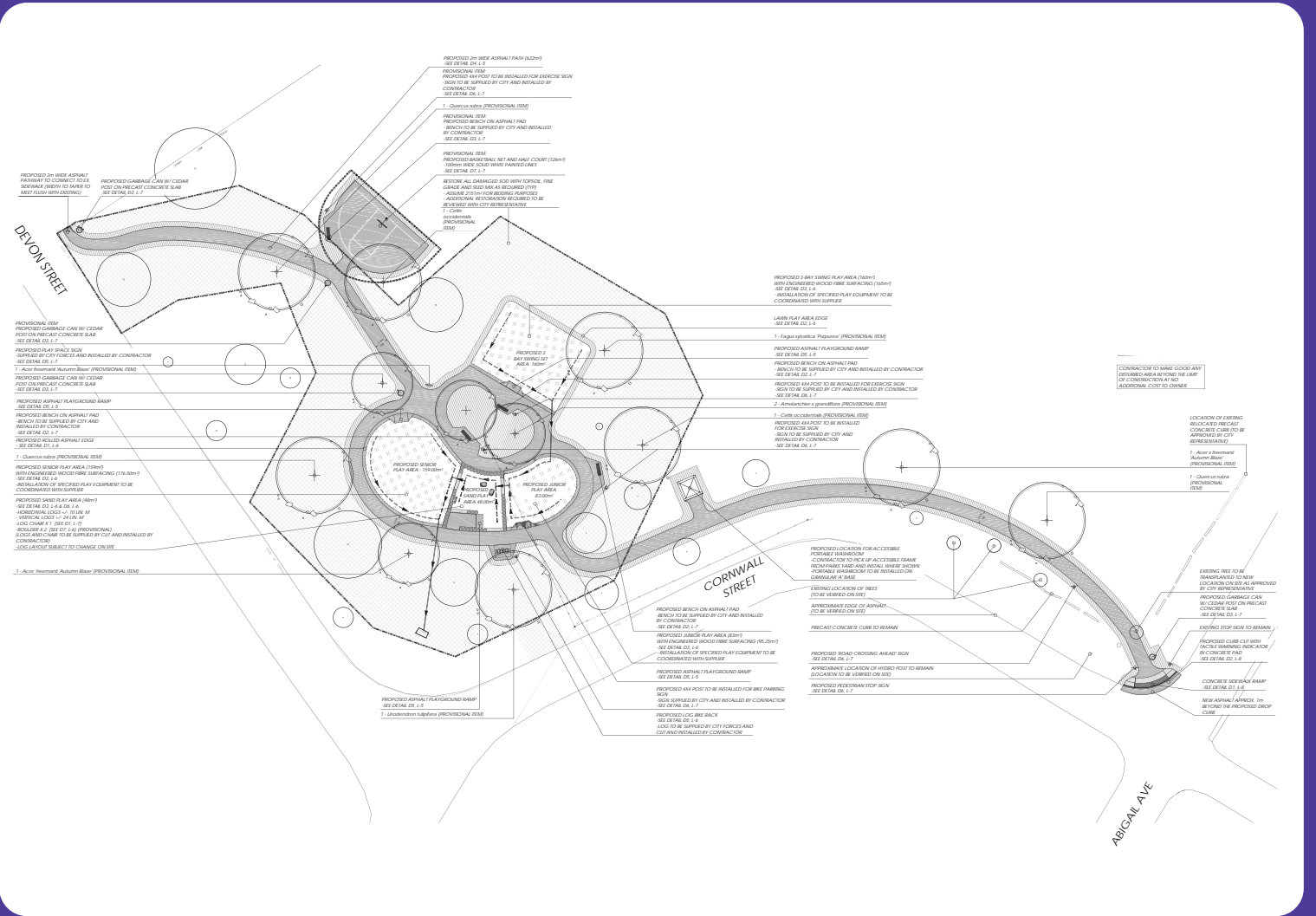




# DEVON DOWN PARK

## COMMUNITY CONSULTATION SUMMARY

Based on available budget and community consultation findings the following design was created for Devon Down Park:



The new playground area will include accessible paved paths, new playground equipment a sand play area with natural feature border, new benches, new trees and a half court basketball pad.

### SUMMARY OF COMMUNITY CONSULTATION

- Community meeting on July 31st, 2019
- Classroom visit to James Hillier Elementary School on June 25th, 2019 (45 students)
- Online survey (26 submissions)
- E-mails (3 received)
- Phone calls (0 received)

### NEXT STEPS

Our design team is in the process of selecting a contractor who will build your new park! Once a Contractor has been chosen, a construction schedule will be determined for summer/fall of 2020. Please be patient as 4 parks are being built and only 1 can be completed at a time. We will update the project schedule as soon as we know more.

Construction will take 4-6 weeks once started.