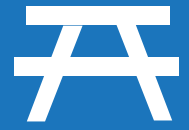


MOOSE PARK

COMMUNITY CONSULTATION SUMMARY



Based on community input via community meetings, in-classroom presentations, student activity sheets, online surveys and phone calls/e-mails received, the following items were included in our playground request for proposal (RFP).

COMBINED PLAYGROUND AREA

- Wave slide
- Key Features: Track ride and net climbing wall
- Sensory features for young children (store front panel, music bell, sand play area)
- Additional play elements focusing on climbing, spinning, hanging, swinging, balancing and jumping (placed in order of preference by the community): Rung Climber, Ladder Climber, Double Twist Climber, Seat Spinner, balance bars and jump bar.

Sand play area with natural log border and carved log chair.

SWINGS & OTHER

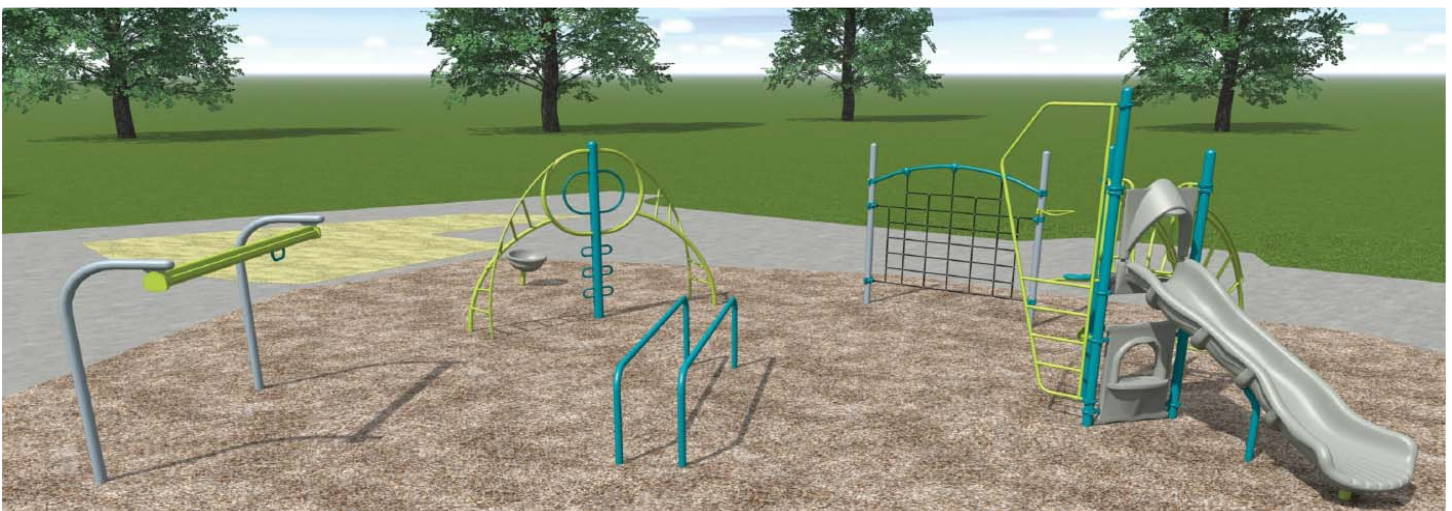
- 2 bay swing set including:
2 belts, 1 tot and 1 accessible swing seat

Paved playground loop, space for auxiliary skating rink, basketball nets for multi-use pad

Teal, Bright Yellow and Grey.

Playground equipment suppliers respond to the RFP with a design which is then evaluated by staff based on special criteria. From here, a winning design is chosen and the project is awarded to the successful supplier.

Here is a sneak peak at the awesome playground equipment coming soon to Moose Park!

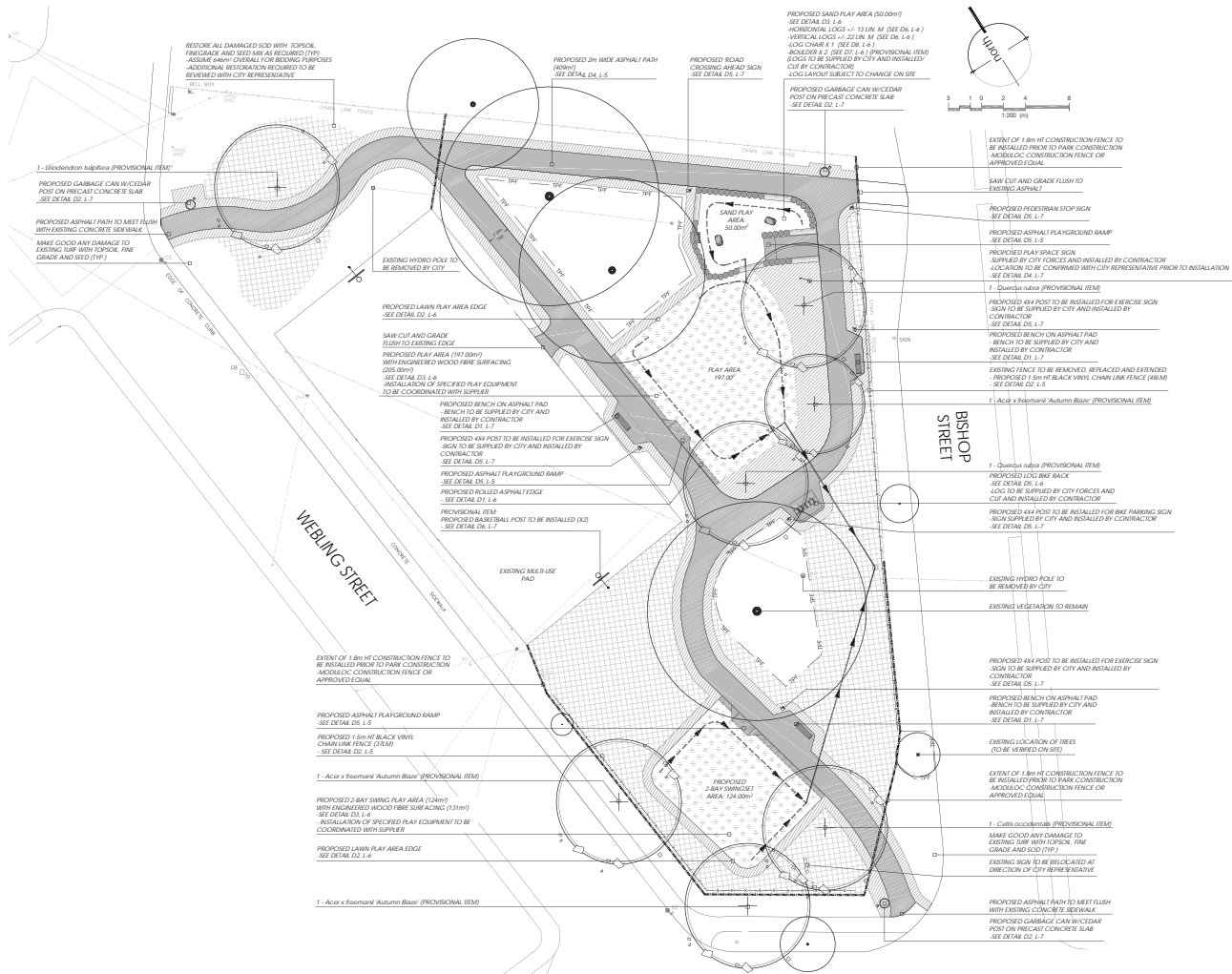




MOOSE PARK

COMMUNITY CONSULTATION SUMMARY

Based on available budget and community consultation findings the following design was created for Devon Down Park:



The new playground area will include accessible paved paths, new playground equipment a sand play area with natural feature border, new benches and new trees.

SUMMARY OF COMMUNITY CONSULTATION

- Community meeting on Sept 16th, 2019
- Classroom visit to Bellview Elementary School on June 14th, 2019 (45 students)
- Online survey (8 submissions)
- E-mails (2 received)
- Phone calls (5 received)

NEXT STEPS

Our design team is in the process of selecting a contractor who will build your new park! Once a Contractor has been chosen, a construction schedule will be determined for summer/fall of 2020. Please be patient as 4 parks are being built and only 1 can be completed at a time. We will update the project schedule as soon as we know more.

Construction will take 4-6 weeks once started.