

PLEASANT RIDGE PARK

COMMUNITY CONSULTATION SUMMARY



Based on community input via community meetings, in-classroom presentations, student activity sheets, online surveys and phone calls/e-mails received, the following items were included in our playground request for proposal (RFP).

JUNIOR PLAY

- 1 slide
- 2 climbing components (each of a different climbing experience)
- Additional components/activities (two of which must be ground-based)
 - 1 imaginative (store front)
 - 1 sensory (musical bell)
 - 1 physical/tactile (driving wheel)
- Stairs with a transfer station

SENIOR PLAY

- Main Slide: Wave slide
- Key Feature: Net Climber
- 7 additional play elements focusing on climbing, spinning, hanging, swinging, balancing and jumping (placed in order of preference by the community): ArchClimber, Node Climber, Double Twist Climber, Overhead Spinning wheels, Seat Spinner, Cozy Egg, Balance Buttons.

SWINGS & OTHER

- 3 bay swing set including: 3 belts, 2 tots and 1 accessible swing seat

Sand play area with natural items border and features.

Favourite colour scheme:
Lime, Purple & Grey

Playground equipment suppliers respond to the RFP with a design which is then evaluated by staff based on special criteria. From here, a winning design is chosen and the project is awarded to the successful supplier.

Here is a sneak peak at the awesome playground equipment coming soon to Pleasant Ridge Park!

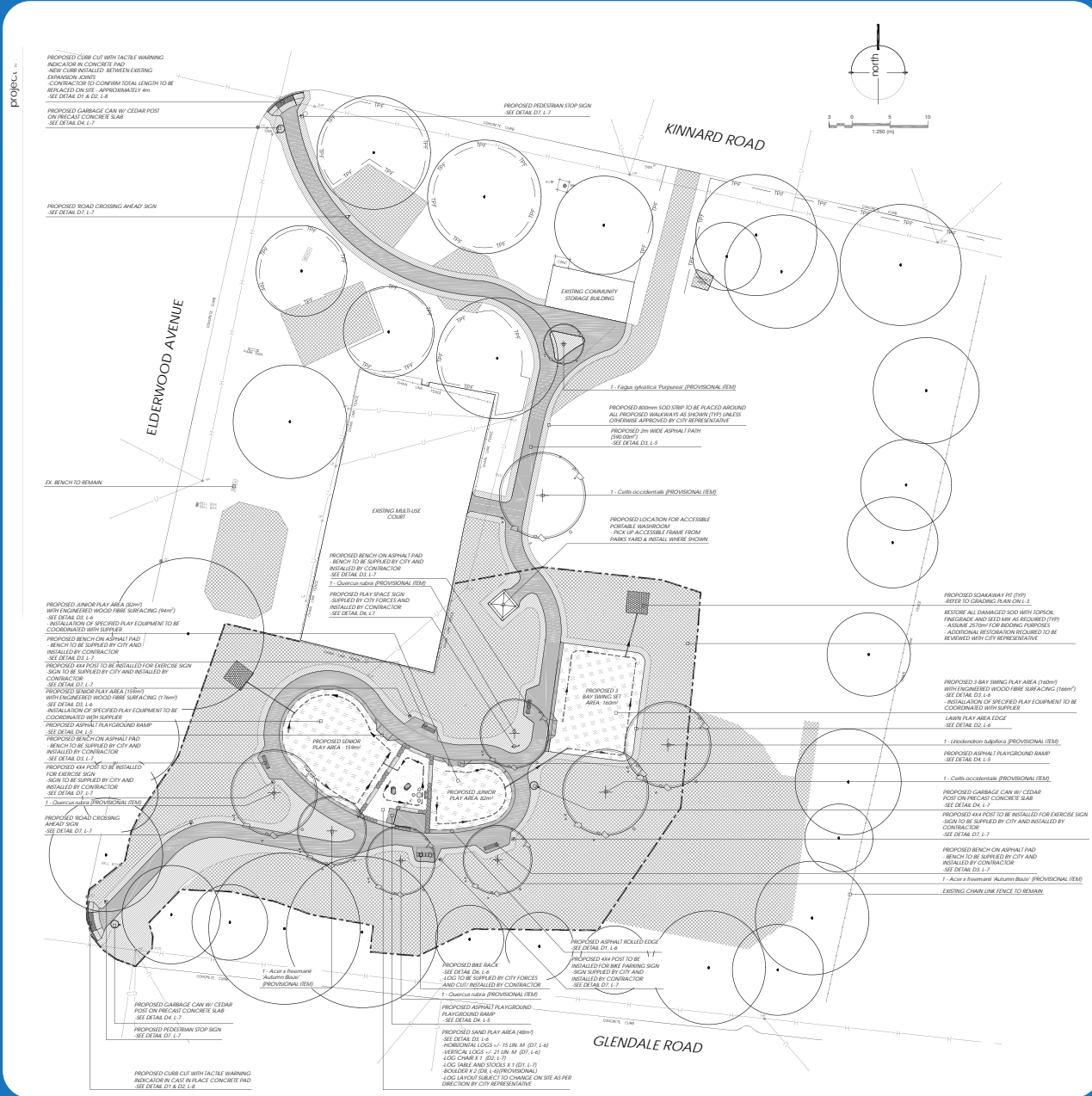




PLEASANT RIDGE PARK COMMUNITY CONSULTATION SUMMARY

Based on available budget and community consultation findings the following design was created for Devon Down Park:

The new playground area will include accessible paved paths, new playground equipment a sand play area with natural feature border, new benches and new trees.



SUMMARY OF COMMUNITY CONSULTATION

- Community meeting on Sept 14th, 2019
- Classroom visit to Agnes G. Hodges Elementary School on June 13th, 2019 (45 students)
- Online survey (10 submissions)
- E-mails (3 received)
- Phone calls (0 received)

NEXT STEPS

Our design team is in the process of selecting a contractor who will build your new park! Once a Contractor has been chosen, a construction schedule will be determined for summer/fall of 2020. Please be patient as 4 parks are being built and only 1 can be completed at a time. We will update the project schedule as soon as we know more.

Construction will take 4-6 weeks once started.