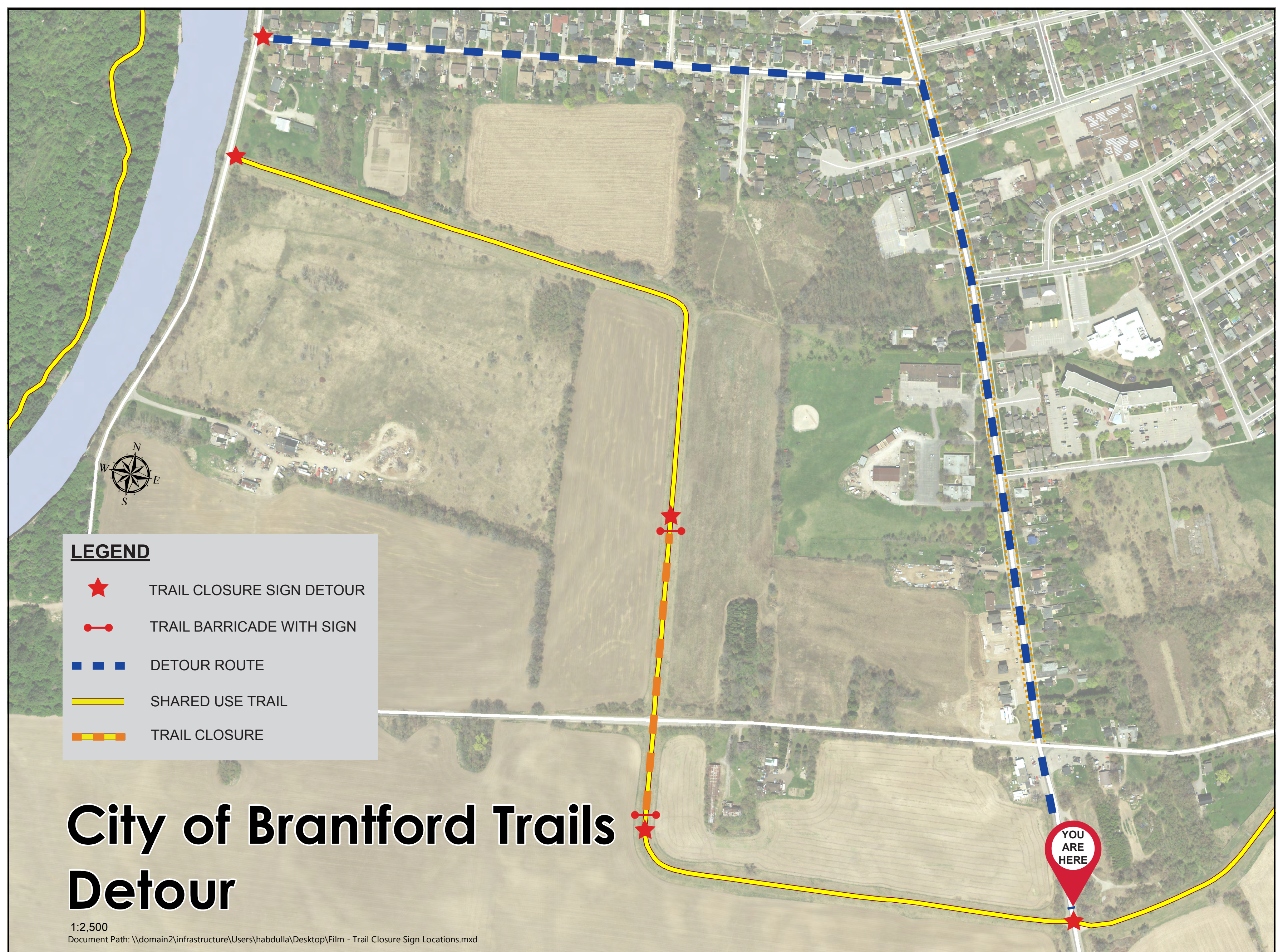


• **NOTICE** •

TRAIL CLOSURE

AT BIRKETT LANE -
NO THROUGH ACCESS



THE TRAIL WILL BE CLOSED
September 29 - October 16
FOR FILM PRODUCTION

PLEASE FOLLOW DETOUR ROUTE SIGNAGE AS POSTED



Questions?
call: 519-759-4150
email: parksandtrails@brantford.ca