



Shellard Lane Joint Build Project Overview

The Joint Build project is a tri-party endeavour between the Grand Erie District School Board (Grand Erie), Brantford Public Library and the City of Brantford with Grand Erie as the lead on the project and the Library and City as major stakeholders in the facility. The facility will include an Elementary School, a new Library Branch, a new City Recreation & Community Centre, and a Child Care Centre.

The construction of the Recreation & Community Centre will create two competition sized gymnasiums complete with bleachers that can accommodate up to 300 spectators and gender inclusive team change/locker rooms that would provide the amenities necessary to be able to host sanctioned sports tournaments at the facility. These tournaments could potentially include Ontario Basketball, Ontario Volleyball, Badminton Ontario and Pickleball Ontario sanctioned tournaments. One of the gymnasiums will be dedicated to the City for all day use while the other will be opened up for use by the City after school hours. Both will follow typical booking procedures currently utilized at our other facilities. The dedicated gymnasium will help to reduce the pressure on Woodman Park Community Centre and Doug Snooks Eagle Place Community Centre from the expanding pickleball community and allow for enhanced seniors programming for 55+ as well as families with pre-school children. Evening and weekend programming would allow for a multitude of programming opportunities at any given time as well as dedicated space for children and youth to engage in quality programming opportunities while socializing with peers and forming new friendships.

The Recreation & Community Centre will also include a community multi-purpose room complete with a teaching kitchen, a youth space, office and workspace for Recreation staff, a bookable meeting room and gender inclusive public washrooms including universal and barrier-free washrooms. The 13,500-foot Library will have dedicated public parking, collections for people of all ages, quiet study spaces and an outdoor reading area. In addition to serving the public, the library will function as the school library for dedicated periods of the day during the school year.

The building follows Grand Erie's and the City of Brantford's sustainability goals. Energy efficiency components, including building orientation, materials, envelope design and operational considerations have been built in from the project's outset. Energy efficient mechanical and electrical systems are being selected to minimize operating and maintenance costs. The facility is a highly efficient and environmentally conscious building, designed to be Net-Zero Ready, allowing for easy future conversion to utilize solar or geothermal systems to meet the ever-increasing needs for energy conservation.



Figure 1 - Public Library Entrance



Figure 2 - Recreation & Community Centre Entrance



Figure 3 – Birdseye View from the Southwest Park



Figure 4 – Birdseye View from Shellard Lane & Strickland Ave.

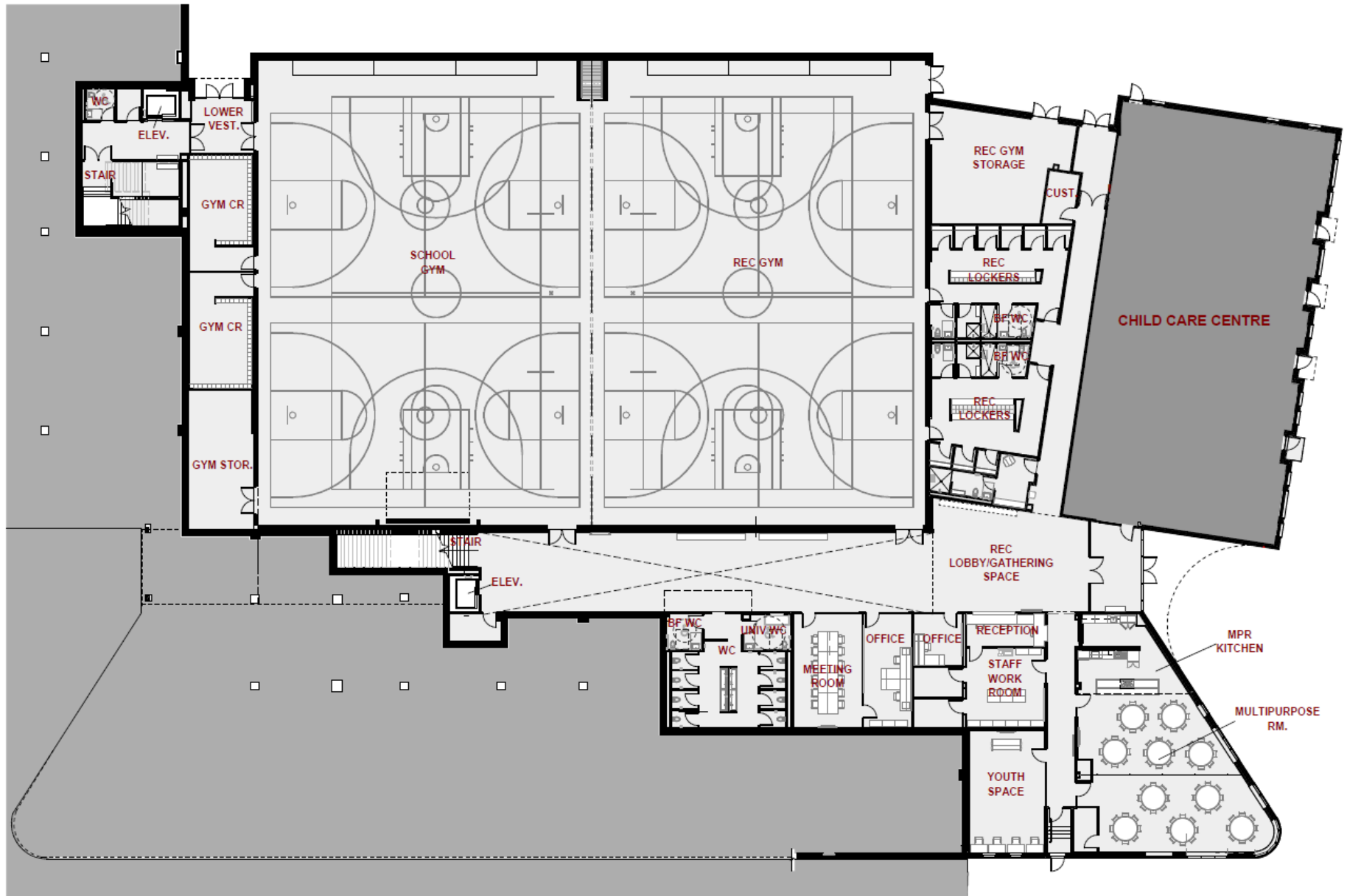


Figure 5 - Recreation Centre Floor Plan

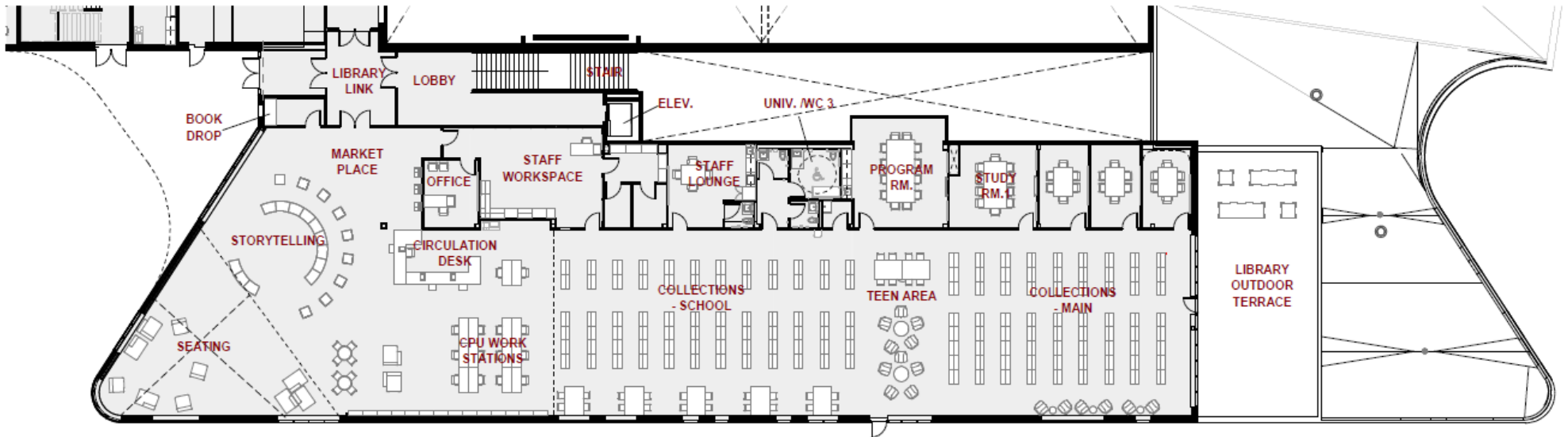


Figure 6 - Public Library Floor Plan

